

Page 1 of 2 A000674071



A000674071

OFFICE OF THE COUNTY RECORDER  
 CASS COUNTY, MINNESOTA  
 CERTIFIED, FILED, AND/OR  
 RECORDED ON  
 6/30/2021 10:05:43 AM  
 AS DOC #: A000674071  
 PAGES: 2  
 REC FEES: 0.00  
 KATHRYN M. NORBY  
 CASS COUNTY RECORDER  
 BY NG Dep TX#: 173051

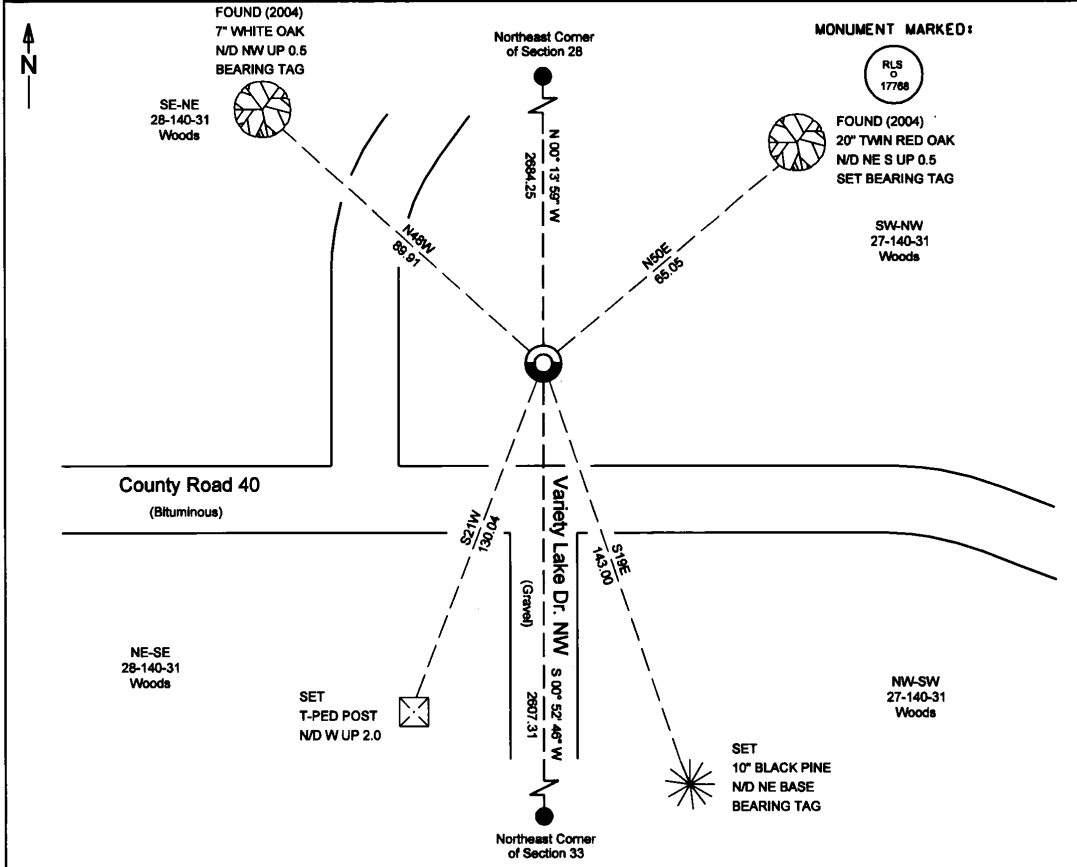
Index No. T-13

**CERTIFICATE OF LOCATION OF GOVERNMENT CORNER**

INDEX NO. T-13, East Quarter CORNER OF SECTION 28, TOWNSHIP 140, RANGE 31,  
 STATE OF MINNESOTA, COUNTY OF CASS.

AT THE CORNER LOCATION SHOWN ON THE SKETCH:

- ON 04-14-2021 FOUND A(N) 1/2" Iron pipe with plastic cap stamped "RLS 17768", down 0.2'
- LEFT MONUMENT AS FOUND,  LOWERED MONUMENT,  REMOVED MONUMENT (EXPLAIN)
- ON \_\_\_\_\_ DATE PLACED A(N) \_\_\_\_\_



I hereby certify that this survey, plan, or report was prepared by me or under my direct supervision, and that I am a duly Licensed Land Surveyor under the laws of the State of Minnesota. I further certify that this certificate of location of government corner is correct and complete to the best of my knowledge and belief.

Signature: James Kramer  
 Date: 6-04-2021  
 Reg. No. 23668

NAD 1983/1998 CASS COUNTY COORDINATES  
 N= 140272.288 E= 405096.526

Coordinates derived by RTK GPS (survey grade)

SKETCH OF REFERENCE TIES  
 (not to scale - bearings are magnetic)  
 Ties are measured to center of monument unless otherwise noted  
 UNITS =  Metric  English

**KRAMER LEAS DELEO**  
 SURVEYING • ENGINEERING • PLANNING  
 BRAINERD ST. CLOUD



**STATEMENT OF EVIDENCE:**

EAST QUARTER CORNER OF SECTION 28,  
TOWNSHIP 140 NORTH, RANGE 31 WEST, CASS  
COUNTY, MINNESOTA

**1870** The original public land survey was completed and a wood post was set to mark the East Quarter corner of Section 29. The following bearing ties were set. Information on file in the MN historical Society, St. Paul MN. Copies on file in the Cass County Highway Department/Surveyors Office (CCHD/SO).

14" Norway Pine	North	6 links (3.96)
12" Norway Pine	South	14 links (9.24)

Thomas Walker  
US Deputy Surveyor

**1908** Hiram Township Road Orders shows a post and connected with government road about 30 rods West of the Quarter corner post on the West side of Section 27.

Township Road Orders

**1975** Cass County Highway Department indicates corner in place.

Project 11-640-01

**2004** Terry Freeman found a 7/8" iron pipe with plastic cap stamped "RLS 21367" flush in ditch, 57' +/- North of centerline of County Road 40, on centerline extension of Variety Lake Road, and 35' +/- East of trail. The following bearing ties were found.

13" Red Oak	N48W	89.91
4" Black Oak	N50E	65.05

CCHD/SO  
#2000.40

**2021** Crews at Kramer Leas Deleo recovered an iron pipe with plastic cap stamped "RLS 17768" down 0.2. The recovered iron monument is accepted as best available evidence of the corner location, and the perpetuation of the original corner location. The following bearing ties were recovered.

(2004) 7 White Oak	N50E	65.05
(2004) Twin Red Oak	N48W	89.91

The following bearing ties were set.

T-Ped Post	S21W	130.04
10" Black Pine	S19E	1430.00

For additional information contact:  
**Kramer Leas Deleo PC**  
1120 Industrial Park Road Southwest  
Brainerd, MN. 56401  
218-829-5333