

Page 1 of 2 A000674070



A000674070

OFFICE OF THE COUNTY RECORDER
 CASS COUNTY, MINNESOTA
 CERTIFIED, FILED, AND/OR
 RECORDED ON
 6/30/2021 10:05:42 AM
 AS DOC #: A000674070
 PAGES: 2
 REC FEES: 0.00
 KATHRYN M. NORBY
 CASS COUNTY RECORDER
 BY NG Dep TX#: 173051

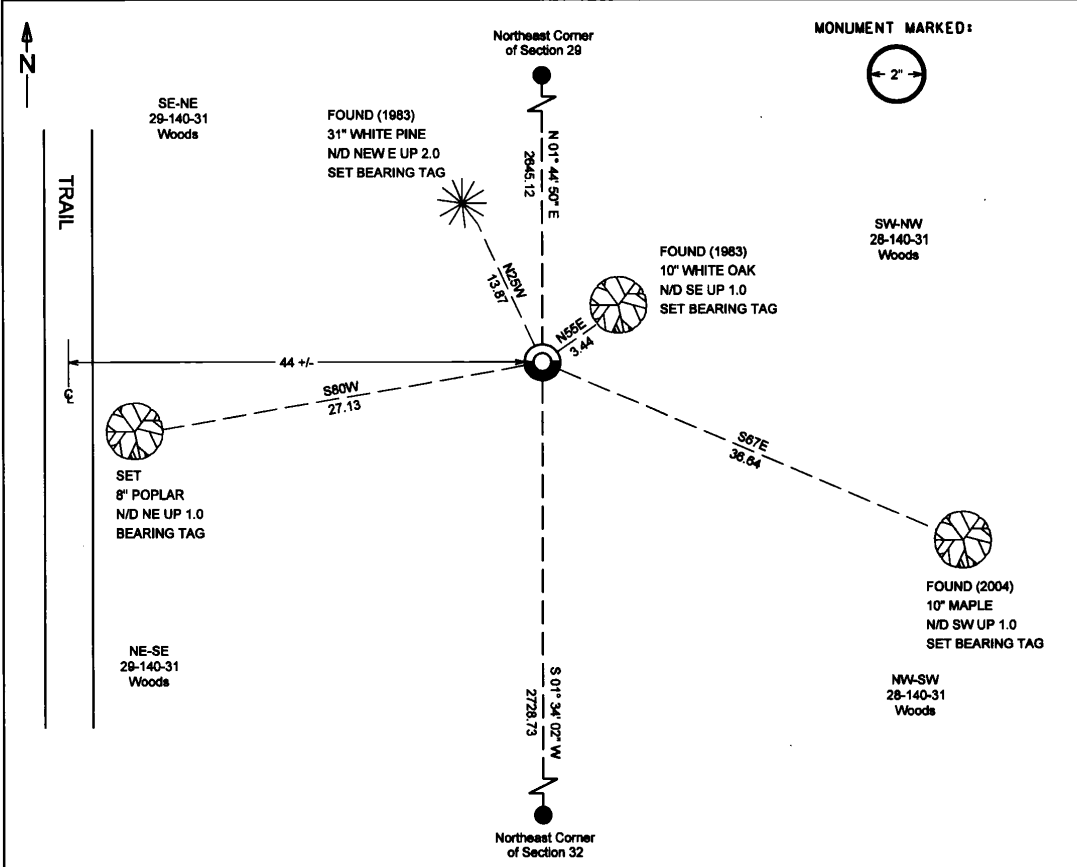
Index No. T-9

CERTIFICATE OF LOCATION OF GOVERNMENT CORNER

INDEX NO. T-9, East Quarter CORNER OF SECTION 29, TOWNSHIP 140, RANGE 31,
 STATE OF MINNESOTA, COUNTY OF CASS.

AT THE CORNER LOCATION SHOWN ON THE SKETCH:

- ON 04-14-2021 DATE FOUND A(N) 4" Iron pipe, up 2.0'
- LEFT MONUMENT AS FOUND, LOWERED MONUMENT, REMOVED MONUMENT (EXPLAIN)
- ON _____ DATE PLACED A(N) _____



I hereby certify that this survey, plan, or report was prepared by me or under my direct supervision, and that I am a duly Licensed Land Surveyor under the laws of the State of Minnesota. I further certify that this certificate of location of government corner is correct and complete to the best of my knowledge and belief.

Signature: James Kramer
 James Kramer
 Date: 6-04-2021
 Reg. No. 23668

NAD 1983/1996 CASS COUNTY COORDINATES
 N= 140277.833 E= 399841.986
 Coordinates derived by RTK GPS (survey grade)

SKETCH OF REFERENCE TIES
 (not to scale - bearings are magnetic)
 Ties are measured to center of monument unless otherwise noted
 UNITS = Metric English

KLD
 1120 Industrial Park Road SW
 Brainerd, MN 56401
 218-829-4533
 KRAMER LEAS DELEO
 SURVEYING • ENGINEERING • PLANNING
 BRAINERD ST. CLOUD



STATEMENT OF EVIDENCE:

EAST QUARTER CORNER OF SECTION 29,
TOWNSHIP 140 NORTH, RANGE 31 WEST, CASS
COUNTY, MINNESOTA

1870 The original public land survey was completed and a wood post was set to mark the East Quarter corner of Section 29. The following bearing ties were set. Information on file in the MN historical Society, St. Paul MN. Copies on file in the Cass County Highway Department/Surveyors Office (CCHD/SO).

28" White Pine	S70E	47 links (31.02)
10" Birch	N06W	22 links (14.52)

Thomas Walker
US Deputy Surveyor

1983 Terry Freeman and Olson found a 2" iron pipe. The following bearing ties were noted.

14" White Pine	N25W	13.55
40" White Pine stump	S65E	36.50
6" White Oak	N55E	3.30

Land Corner Record

2004 Cass County Highway Department found a 2" open iron pipe up 1.5, 44' east of trail.

CCHD/SO

2006 Cass County Highway Department found a 2" open iron pipe up 1.5, 44' east of trail. The following bearing ties were recovered.

(1983) 19" White Pine	N25W	13.87
(1983) 8" Black Oak	N55E	3.44
(2004) 6" Maple	S47E	36.64

CCHD/SO
#2000.040

2021 Crews at Kramer Leas Deleo recovered a 2" open iron pipe. The recovered iron pipe is accepted as best available evidence of the corner location, and is accepted as perpetuation of the original corner location. The following bearing ties were recovered.

(1983) 31" White Pine	N25W	13.87
(1983) 10" White Oak	N55E	3.44
(2004) 10" Maple	S47E	36.64

The following bearing tie was set.

8" Poplar	S80W	27.13
-----------	------	-------

For additional information contact:
Kramer Leas Deleo PC
1120 Industrial Park Road Southwest
Brainerd, MN. 56401
218-829-5333