



A000674066

OFFICE OF THE COUNTY RECORDER

CASS COUNTY, MINNESOTA
CERTIFIED, FILED, AND/OR
RECORDED ON

6/30/2021 10:05:38 AM

AS DOC #: A000674066

PAGES: 3

REC FEES: 0.00

KATHRYN M. NORBY
CASS COUNTY RECORDER

BY NG Dep TX#: 173051

Page 1 of 3 A000674066

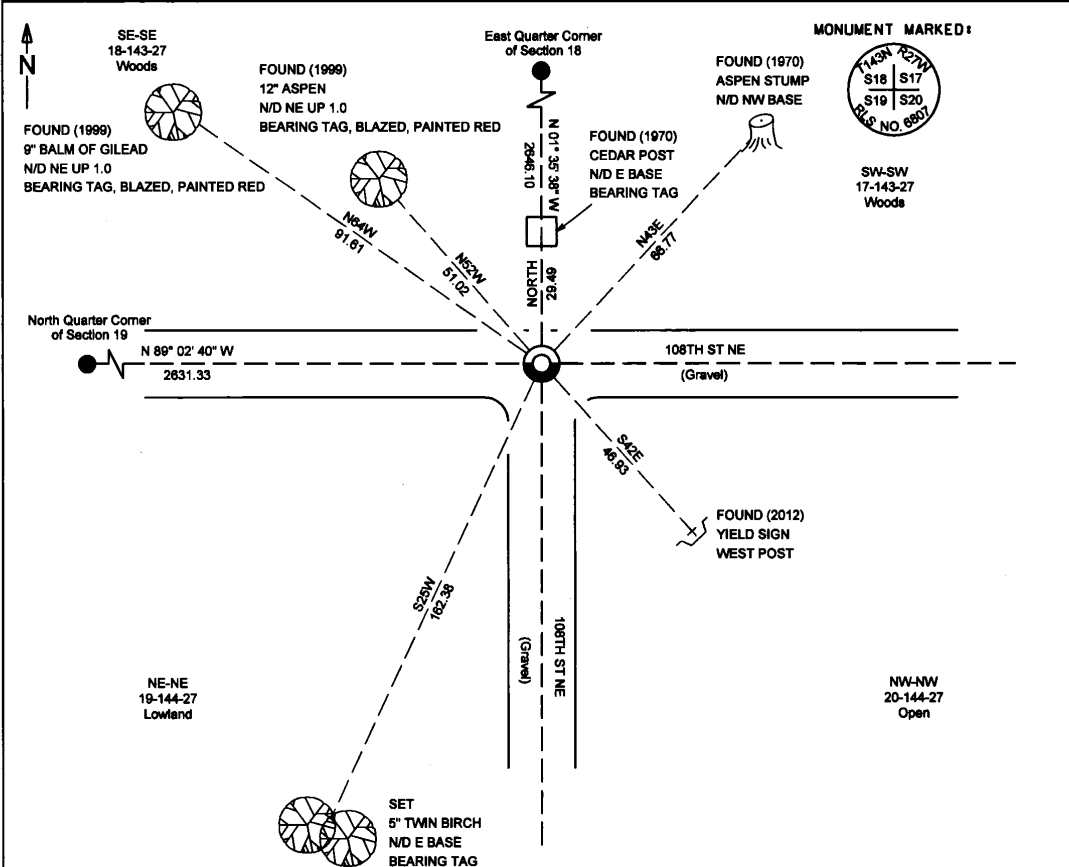
Index No. N-5

CERTIFICATE OF LOCATION OF GOVERNMENT CORNER

INDEX NO. N-5, Northeast CORNER OF SECTION 19, TOWNSHIP 143, RANGE 27,
STATE OF MINNESOTA, COUNTY OF CASS.

AT THE CORNER LOCATION SHOWN ON THE SKETCH:

- ON 04-01-2021 FOUND A(N) Concrete monument with 3" brass cap, down 1.0'
- LEFT MONUMENT AS FOUND, LOWERED MONUMENT, REMOVED MONUMENT (EXPLAIN)
- ON _____ DATE _____ PLACED A(N) _____



I hereby certify that this survey, plan, or report was prepared by me or under my direct supervision, and that I am a duly Licensed Land Surveyor under the laws of the State of Minnesota. I further certify that this certificate of location of government corner is correct and complete to the best of my knowledge and belief.

Signature: James Kramer
Date: 6-04-2021
Reg. No. 23668

NAD 1983/1996 CASS COUNTY COORDINATES
N= 243321.500 E= 520020.409
Coordinates derived by RTK GPS (survey grade)

SKETCH OF REFERENCE TIES
(not to scale - bearings are magnetic)
Ties are measured to center of monument unless otherwise noted
UNITS = Metric English



1120 Industrial Park Road SW
Minnetonka, MN 55011
219-829-4333

KRAMER LEAS DELEO
SURVEYING - ENGINEERING - PLANNING
BRAINEO - ST. CLOUD



N.0-5.0

STATEMENT OF EVIDENCE:

NORTH QUARTER CORNER OF SECTION 19,
TOWNSHIP 143 NORTH, 27 RANGE WEST, CASS
COUNTY, MINNESOTA

1873 The original public land survey was completed and a wood post was set to mark the corner along with the following bearing ties. Information on file in the Mn historical Society, St. Paul MN. Copies on file in the Cass County Highway Department/Surveyors Office (CCHD/SO).

6" Cedar	N54E	20 links (13.20)
12" Spruce	N52W	16 links (10.56)
14" Spruce	S36W	20 links (13.20)
5" White Pine	S36E	11 links (7.26)

William Allen
US Deputy Surveyor

1915 G. Ralph recovered the old post marking the corner.

Cass County
County Book B, Page 96

1915 Geo Ralph recovered an old post marking the corner. The following bearing ties were set.

3" Poplar	S25W	84.40
4" Poplar	S70°30'E	114.20
4" Poplar	N82E	115.00
4" Poplar	N01E	76.60

Cass County
County Book B, Page 96
Curo Book 82, Page 34

1920 B. Clark recovered a hub and 1915 Southeast bearing tie. From that he set an iron pipe with cap in the State road marking the corner.

County Book C, Page 392
Curo Book 168

1920 E.B. Horst recovered an iron monument marking the corner.

Resurvey E-7

1925 Cass County Highway Department indicates an iron monument marking the corner and the following bearing ties.

Telephone pole	Southwest	45.80
Telephone pole	Southwest	51.00

Shelf 5, Book 154, Page 14

1968 Cass County Highway Department recovered a 2" iron pipe at centerline PI station 133+27.6. The following bearing ties were set.

12" Poplar	ENE	46.60
8" Poplar	ESE	49.50
Power Pole	NE	49.50

S.P. 11-11-663-03

1970 United State Forestry Service recovered a 2" iron pipe at the corner location. The iron pipe was replaced with a USFS concrete cylinder with brass cap down 6" to mark the corner. The following bearing ties were noted.

10" Cedar	S61W	188.20
13" Elm	N04W	79.10
6" Aspen	N13E	71.50
11" Aspen	N43E	66.90
Cedar Post	North	29.90

USFS T143R27
Book 2, Page 3



N.O-5.0

1997 R. Main of the USFS recovered the concrete monument that was set in 1970. He lowered the recovered monument and found a 1970 bearing tie.

(1970) 17" Aspen N43E 66.90

The following bearing tie was set.

Steel Sign Post S45W 57.60

USFS T143R27
Book 2, Page 66

1998 Certificate of Location of Government Corner filed by Joseph Foster of Northern Lights Surveying & Mapping Inc., shows crews recovering a brass capped monument on centerlines of roads bearing North-South-East. The recovered monument was accepted as perpetuation of the corner location. The following bearing ties were recovered.

(1970) 10" Cedar Snag S61W 188.20

(1970) 13" Elm Snag N04W 79.10

(1970) 9" Dead Aspen N13E 71.50

(1970) 17" Aspen N43E 66.90

(1970) Cedar Post North 29.90

(1996) 6" Aspen N52W 51.01

(1996) 6" Balm of Gilead N64W 91.61

The following bearing tie were set.

Steel Signpost S50E 57.62

Cass County
Document No. 412417

2012 Cass County Highway Department/Surveyors Office recovered a brass cap in concrete down 0.9 on center line of County Roads #135 and #63. The following bearing ties were recovered.

(1998) 8" Balm of Gilead N64W 91.61

(1998) 6" Aspen N52W 51.02

The following bearing ties were set.

3" Elm N26E 37.90

Yield Sign Post S44E 46.43

CCHD/SO
#2011.035

2021 Crews at Kramer Leas Deleo recovered a concrete monument with brass cap down 0.6 on centerline of County Roads #135 and #63. The recovered monument matches the monument that was set in 1970 and recovered throughout the 1990's, and is accepted as perpetuation of the corner location. The following bearing ties were recovered.

(1970) Cedar Post North 29.90

(1970) Aspen Stump N43E 66.90

(1998) 8" Balm of Gilead N64W 91.61

(1998) 6" Aspen N52W 51.02

(2012) 3" Elm N26E 37.90

(2012) Yield Sign Post S44E 46.43

The following bearing tie was set.

5" Twin Birch S25W 162.38

For additional information contact:
Kramer Leas Deleo PC
1120 Industrial Park Road Southwest
Brainerd, MN. 56401
218-829-5333