



A000670878

OFFICE OF THE COUNTY RECORDER
CASS COUNTY, MINNESOTA
CERTIFIED, FILED, AND/OR
RECORDED ON

4/1/2021 10:38:19 AM

AS DOC #: A000670878

PAGES: 2

REC FEES: 0.00

KATHRYN M. NORBY
CASS COUNTY RECORDER

BY SF Dep TX#: 170434

Page 1 of 2
A000670878

CERTIFICATE OF LOCATION OF GOVERNMENT CORNER

I HEREBY CERTIFY THAT THIS DOCUMENT AND THE DATA CONTAINED HEREIN WAS PREPARED BY ME OR UNDER MY DIRECT SUPERVISION.

Robert W. Murray 3-26-21
SIGNATURE DATE

LICENSE NO. 15483

- LAND SURVEYOR
- COUNTY SURVEYOR
- PROFESSIONAL ENGINEER
- COUNTY ENGINEER

NAD 83 (1996) CASS COUNTY NORTH ZONE COORDINATES

N = 276435.26 E = 399726.41

(COORDINATES ARE SHOWN AS INFORMATION ONLY, SUBJECT TO VERIFICATION)

INDEX NO. L.0 - 9.0, EAST QUARTER CORNER OF SECTION 17, TOWNSHIP 144, RANGE 31, 5TH P.M.

STATE OF MINNESOTA, COUNTY OF CASS

AT THE CORNER LOCATION SHOWN ON THE SKETCH:

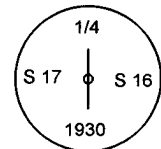
- ON 12-13-2018 FOUND A(N) 1 inch diameter iron pipe with GLO Brass Cap
- LEFT MONUMENT AS FOUND,
- LOWERED MONUMENT,
- REMOVED MONUMENT (EXPLAIN)

SKETCH OF REFERENCE TIES

Magnetic Declination Assumed 0°0'

Sketch Not To Scale

MONUMENT MARKED:

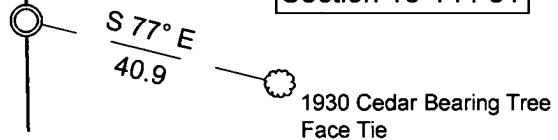


THICK CEDAR TREES

THICK CEDAR TREES

Section 17-144-31

Section 16-144-31



THICK CEDAR TREES

THICK CEDAR TREES

MURRAY
SURVEYING, INC.
P.O. BOX 1038 BEMIDJI, MN 56601
218-751-5898

STATEMENT OF EVIDENCE RELATIVE TO THIS CORNER LOCATION IS ON BACK OF PAGE

Statement of Evidence

**EAST QUARTER CORNER SECTION 17, TOWNSHIP 144 NORTH,
RANGE 31 WEST OF THE 5TH PRINCIPAL MERIDIAN**

(Vol. 411, Pg. 56) The original Public Land Survey was run in 1875 by Benjamin C. Baldwin. The corner was set and two bearing trees were recorded as accessories;

12 inch Tamarack	South 12° West	7 Links
8 inch Cedar	North 05° West	12 Links

In 1931, (Vol. 234, Pg. 129) H.D. Craig conducted a Dependent Resurvey of a Portion of the Exterior and Subdivisional Lines and Subdivision of Sections, Re-Marking Indian Allotment corners in T. 144 N., R. 31 W. He found the remains of both original bearing trees:

16 inch Tamarack Stump	South 12° West	7 Links	Marked "BT"
12 inch Cedar Stump	North 05° West	12 Links	Marked "BT"

He set a 1 inch by 3 foot iron pipe with GLO brass cap 30 inches in ground to mark the corner, from the original ties. He recorded two new bearing trees as accessories:

8 inch cedar	South 76 3/4° East	62 Links	Marked 1/4 S. 16
9 inch cedar	South 54 3/4° West	59 Links	Marked 1/4 S. 17

On December 12, 2018, Murray Surveying, Inc. searched for Public Land Survey Corners in the area. They found a 1 inch iron pipe with GLO brass cap marking the corner and one 1930 Cedar bearing tree South 77° East 40.9 feet. From the northeast corner of Section 17 (doc. A000609815), the corner was found to be South 00° 54' 21" East 2606.12 feet, bearing based on Cass County Coordinate System, North Zone.

Analysis of the above information indicates that the location of this Public Land Survey Corner has been perpetuated by the GLO brass cap iron monument set in 1931, from original accessories. Therefore, the location of the GLO brass cap iron monument is accepted as the best available evidence of this Public Land Survey Corner.

For additional information contact Murray Surveying Inc, Bemidji, MN.