

Page 1 of 2 A000670256

I hereby certify that this survey, plan, or report was prepared by me or under my direct supervision, and that I am a duly Licensed Land Surveyor under the laws of the State of Minnesota. I further certify that this certificate of location of government corner is correct and complete to the best of my knowledge and belief.

Signature: James Kramer
James Kramer

Date: 02-10-2021

Reg. No. 23668



A000670256

**OFFICE OF THE COUNTY RECORDER
CASS COUNTY, MINNESOTA
CERTIFIED, FILED, AND/OR
RECORDED ON**

3/16/2021 11:05:54 AM

AS DOC #: A000670256

PAGES: 2

REC FEES: 0.00

**KATHRYN M. NORBY
CASS COUNTY RECORDER**

BY NG Dep TX#: 169950

SKETCH OF REFERENCE TIES

(not to scale - bearings are magnetic)
Ties are measured to center of monument unless otherwise noted

UNITS = Metric English

NAD 1983/1996 CASS COUNTY (SOUTH) COORDINATES

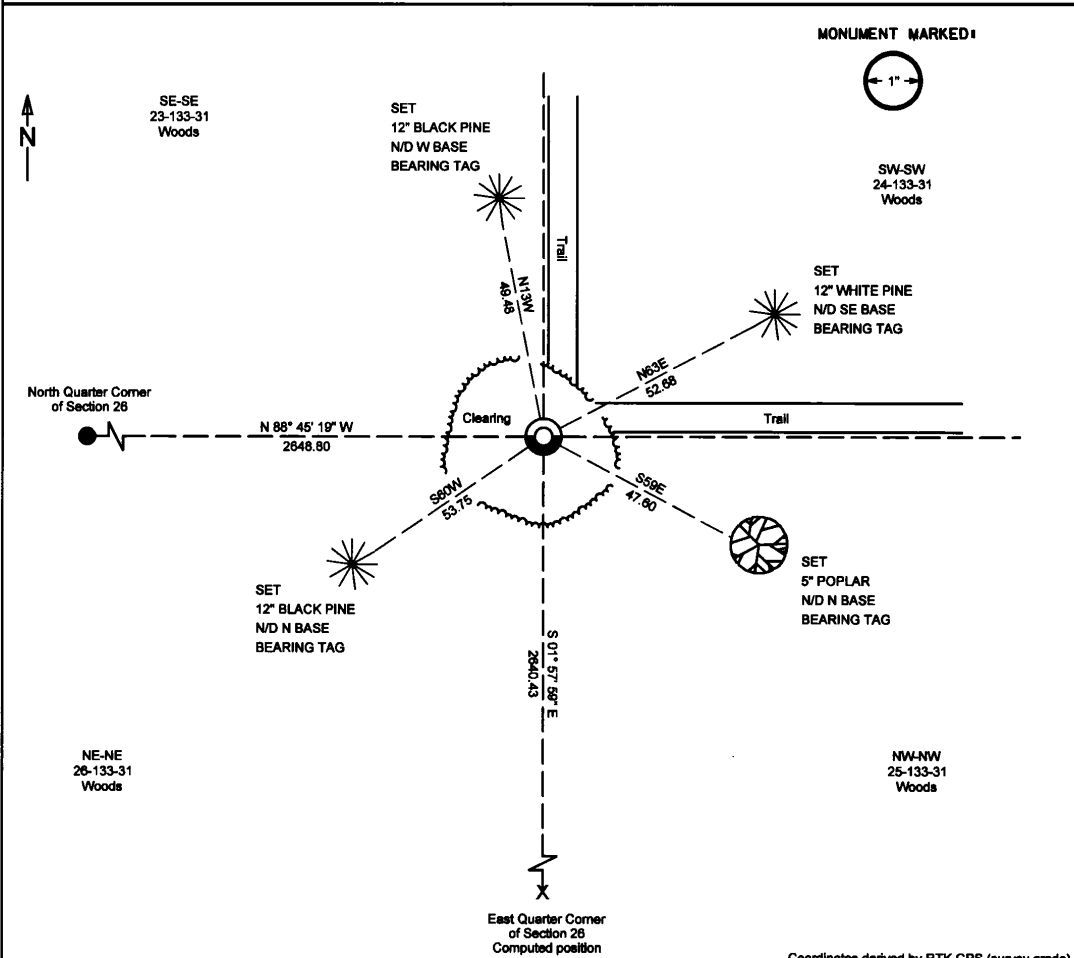
N= 156501.817 E= 481921.855

CERTIFICATE OF LOCATION OF GOVERNMENT CORNER

INDEX NO. R.0-21.0, Northeast CORNER OF SECTION 26, TOWNSHIP 133, RANGE 31,
STATE OF MINNESOTA, COUNTY OF CASS

AT THE CORNER LOCATION SHOWN ON THE SKETCH:

- ON 02-27-2020 FOUND A(N) 1" iron pipe, down 0.2 feet
- DATE
- LEFT MONUMENT AS FOUND, LOWERED MONUMENT, REMOVED MONUMENT (EXPLAIN)
- ON _____ PLACED A(N) _____
- DATE



MONUMENT MARKED:



NOTE:
Corner is 8 feet West of centerline North
and 8 feet South of centerline East

Coordinates derived by RTK GPS (survey grade)

KLD 1120 Industrial Park Road SW
Brainerd, MN 56401
218-828-6333

KRAMER LEAS DELEO
SURVEYING • ENGINEERING • PLANNING
BRainerd ST. CLOUD

**Northeast Corner of Section 26 T133N-R31W
Cass County, Minnesota**

1863

The original public land survey was completed by George B. Wright. He chained North between Sections 25 and 26, at 80.00 chains (5280.00) a wood post was set to mark the corner common to Sections 23, 24, 25 and 26 from which the following bearing ties were established. Information on file in the MN Historical Society, St. Paul MN. Copies on file in the Cass County Highway Department/Surveyors Office (CCHD/SO).

5" Aspen	S58 ¼ E	39 links (25.74)
8" Pine	S11 ½ W	45 links (29.70)
12" Pine	N38W	153 links (100.98)
8" Aspen	N04 ¼ E	149 links (98.34)

February 21, 1921

John Curo and crew set a 2" X 48" iron monument at corners common to Sections 23, 24, 25 and 26 at the P.I. of 4 fences. Crews recovered stumps of Northwest and Southwest pine bearing ties. Information on file in CCHD/SO

8" Pine	S11 ½ W	45 links (29.70)
12" Pine	N38W	153 links (100.98)

Curo Scans
Book 173 Page 11
County Survey Record
Book D Page 09

1994

Certificate of Survey by Wallace Buckler indicates a recovered iron monument in place marking the Southeast corner of Section 23. Information on file in CCHD/SO.

Certificate of Survey 0470

February 27, 2020

Crews at Kramer Leas Deleo recovered a 1" open iron pipe marking the corner. The iron pipe measures North 88° 45' 19" West 2648.80 feet to the North Quarter of Section 26. The recovered iron pipe is accepted as perpetuation of the original public land corner. The following bearing ties were set.

12" Black Pine	N13W	49.48
12" Black Pine	S60W	53.75
7" White Pine	N63E	52.68
5" Poplar	S59E	47.60

For additional information contact:
Kramer Leas Deleo PC
1120 Industrial Park Road Southwest
Brainerd, MN. 56401
218-829-5333