



A000668754

OFFICE OF THE COUNTY RECORDER
CASS COUNTY, MINNESOTA
CERTIFIED, FILED, AND/OR
RECORDED ON

1/28/2021 10:33:35 AM

AS DOC #: A000668754

PAGES: 3

REC FEES: 0.00

KATHRYN M. NORBY
CASS COUNTY RECORDER

BY SF Dep TX#: 168663

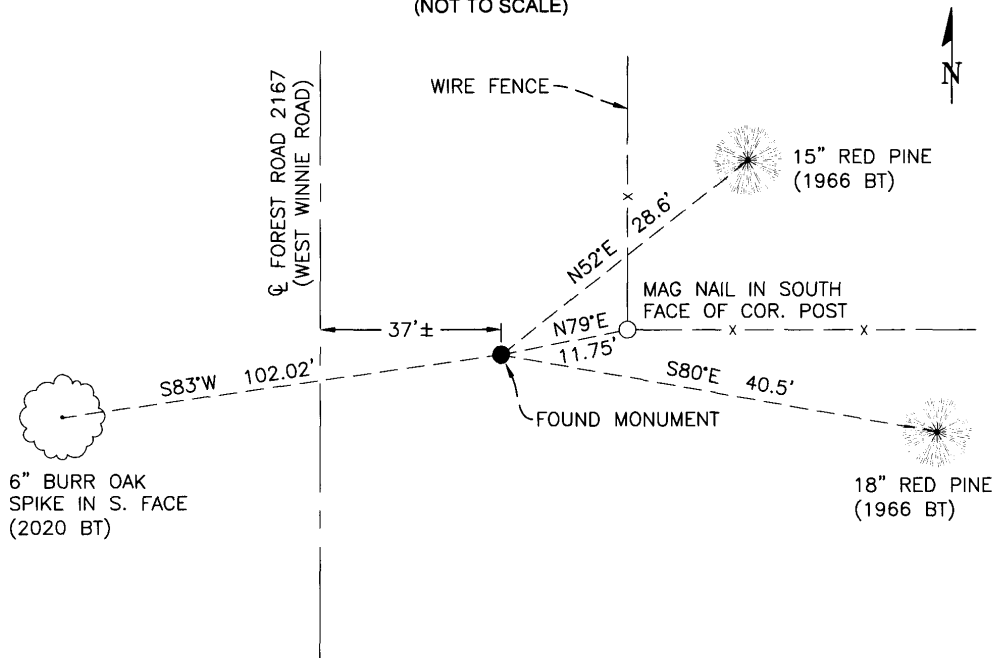
CERTIFICATE OF LOCATION OF GOVERNMENT CORNER

North 1/4 Corner of Section 3, Township 145 N., Range 29 W., 5th P.M.
County of Cass, State of Minnesota

At the corner location shown on the sketch :

- On 04/27/2020 found 2" iron post with brass cap, marked as described in 1934 GLO field notes, its top 4" above the ground and in good condition.
- left monument as found lowered monument removed monument (explain)
- On _____ set _____

SKETCH OF REFERENCE TIES (NOT TO SCALE)




Note:
Distances shown are horizontal
Bearings shown are geodetic

Sheet 1 of 3

Statement of evidence relative to this corner location is on the back of this page

I hereby certify that this survey, plan, or report was prepared by me or under my direct supervision and that I am a duly Licensed Land Surveyor under the laws of the state of Minnesota.


Aaron J. Skattum
MN License No. 54139

12-28-2020
Date

Corner Index No. A.0-15.0
GCDB ID No. 440700

Cass County Coordinates
North Zone, NAD83(2011)
N: 322,539.148
E: 469,232.481



Corner Index No. A.0-15.0

STATEMENT OF EVIDENCE

North 1/4 Corner of Sec. 3, T.145N., R.29W., 5th P.M., Cass County, MN

1873 P.H. Conger, US General Land Office, originally established this corner while surveying the north line of the township, and set wood post to mark the corner position with the following witnesses:

5" Jack pine N35°W 6 links (3.96')

Information on file at the MN Historical Society, St. Paul, MN. Copies filed with the Cass County Highway Department/Surveyor's Office (CCHD/SO).

1900 T.M. Fowble, U.S. Corps of Engineers, indicates known corner at this location as shown on map of Lake Winnibigoshish Reservoirs.

1934 J. Curo, private surveyor (Curo Book 287, Page 23) subdivided the SE1/4 of Section 34 and noted a "probable" 1/4 corner marked by an iron bolt. The notes are not specifically dated, but the work was likely done before the GLO resurvey in 1934.

1934 H.D. Craig, US General Land Office, during a dependent resurvey of the north line of this township, found no evidence of the original post or bearing trees and set a 2"x36" iron post with brass cap at record bearing and distance from the NW corner of Section 3, and noted the following ties:

7" Jack pine	N78°W	248 links (163.68')	New BT
6" Pine post	N7°23'E	48 links (31.68')	Found square post, 5' high

Information on file at the CCHD/SO.

1948 S.F. Sorenson, private surveyor, shows an existing monument at this location on the plat of Ted's Subdivision, recorded as Document #136358 in the Cass County Recorder's Office.

1965 J. Ekstrom, US Forest Service, (Corner Book 1, page 11, USFS Records) found the GLO iron monument and reset it 6" under the surface of the road, noting the following ties:

7" Jack pine	N78°W	163.68'	1934 BT, now rotted snag with scribes
6" Pine post	N7°23'E	31.68'	1934 tie, not found
8" Red pine	N73°W	24.5'	New BT
8" Red pine	S50°W	33.9'	New BT
Cedar post	East	16.0'	New 4"x4"x60" cedar signpost set

1966 W. Okerman, US Forest Service, (Corner Book 1, page 11, USFS Records) found the GLO iron monument and marked additional bearing trees because of re-alignment of the road:

7" Red pine	N52°E	28.6'	New BT
9" Red pine	S80°E	40.5'	New BT

1974 K. Krause, US Forest Service, (Corner Book 1, page 11, USFS Records) found the GLO iron monument 1 foot SW of 10" fence corner post, and noted the following ties:

7" Red pine	N52°E	28.6'	1966 BT, good condition
9" Red pine	S80°E	40.5'	1966 BT, good condition

1985 K. Krause & J. Allison, US Forest Service, (Corner Book 1, page 11, USFS Records) found the GLO iron monument 8" below the surface, and noted the following ties:

7" Jack pine	N78°W	163.68'	1934 BT, stump and rotted log, scribes
6" Pine post	N7°23'E	31.68'	1934 tie, gone
8" Red pine	N73°W	24.5'	1965 BT, gone from road construction
8" Red pine	S50°W	33.9'	1965 BT, gone from road construction
14" Red pine	N52°E	28.6'	1966 BT found, scribe visible
11" Red pine	S80°E	40.5'	1966 BT found, scribe visible
Cedar post	East	16.0'	1965 signpost in place
Steel signpost	North	3.6'	New 8" long steel signpost set
13" Red pine	S43°W	70.05'	New BT



Corner Index No. A.0-15.0

STATEMENT OF EVIDENCE

North 1/4 Corner of Sec. 3, T.145N., R.29W., 5th P.M., Cass County, MN

1986 R.A. Mustonen, private surveyor, shows an existing monument at this location on their certificate of survey, recorded as Document #286815 in the Cass County Recorder's Office.

2008 J. Major, Northern Lights Surveying & Mapping, Inc., (Certificate of Survey #4061, on file at the CCHD/SO) shows a found GLO monument at this location.

2016 T. Freeman, Northern Engineering & Consulting, Inc., (Certificate of Survey #8053, on file at the CCHD/SO) shows a found monument at this location.

2020 A. Skattum, US Forest Service, (Land Lines Book 31, page 75, USFS Records) found the GLO iron monument in good condition and noted the following ties:

7" Jack pine	N78°W	163.68'	1934 BT, now badly rotted stump & hole
15" Red pine	N52°E	28.6'	1966 BT found, good condition
18" Red pine	S80°E	40.5'	1966 BT found, good condition
Cedar post	East	16.0'	1965 signpost inplace
6" Burr oak	S83°W	102.02'	New BT
Steel signpost	East	0.65'	Steel USFS signpost, origin unknown
Fence corner	N79°E	11.75'	Mag nail in wooden corner fence post

US Forest Service records cited above are on file at the Chippewa National Forest Supervisor's Office, Cass Lake, MN.