



A000668747

OFFICE OF THE COUNTY RECORDER
CASS COUNTY, MINNESOTA
CERTIFIED, FILED, AND/OR
RECORDED ON

1/28/2021 10:33:28 AM

AS DOC #: A000668747

PAGES: 2

REC FEES: 0.00

KATHRYN M. NORBY
CASS COUNTY RECORDER

BY SF Dep TX#: 168663

CERTIFICATE OF LOCATION OF GOVERNMENT CORNER

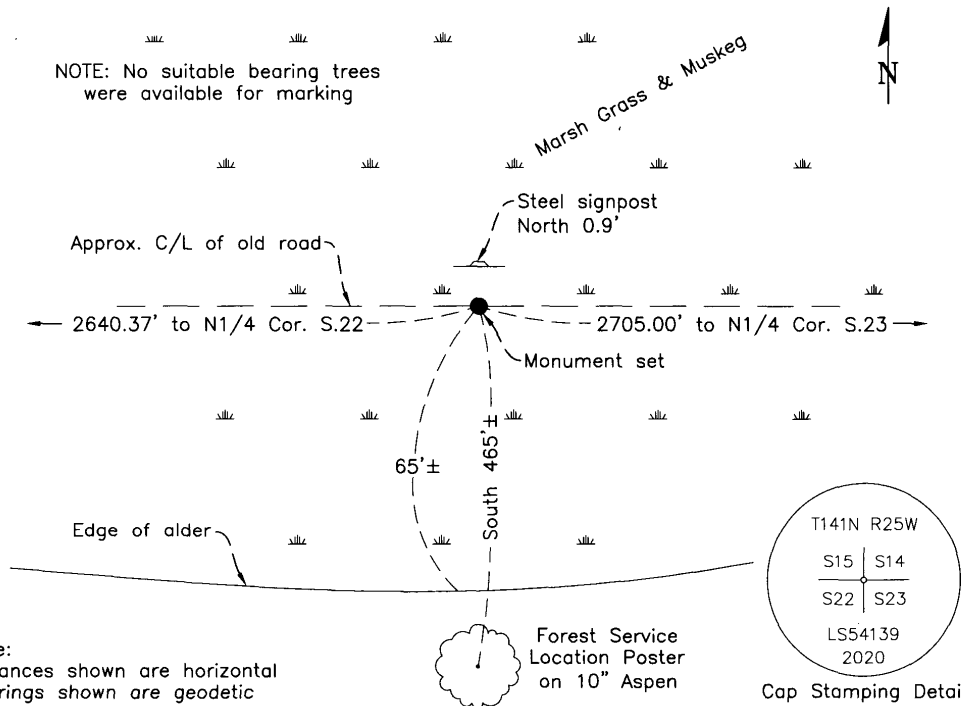
Northeast Corner of Section 22, Township 141 N., Range 25 W., 5th P.M.
County of Cass, State of Minnesota

At the corner location shown on the sketch :

- On _____ found _____
- left monument as found lowered monument removed monument (explain)
- On Sept. 23, 2020 set 2-1/2" dia. aluminum pipe, 54" long, with 3-1/2"
aluminum cap and magnet, stamped as shown, up 1.0' in grass marsh.

SKETCH OF REFERENCE TIES (NOT TO SCALE)

NOTE: No suitable bearing trees
were available for marking



Note:
Distances shown are horizontal
Bearings shown are geodetic

Statement of evidence relative to this corner location is on the back of this page

I hereby certify that this survey, plan, or report was prepared by me or under my direct supervision and that I am a duly Licensed Land Surveyor under the laws of the state of Minnesota.

Aaron J. Skattum
Aaron J. Skattum
MN License No. 54139

12-14-2020
Date

Corner Index No. N.0-17.0
GCDB ID No. 500400

Cass County Coordinates
North Zone, NAD83 2011 Adj.
N: 179,135.501
E: 599,556.060



Page 1 of 2
A000668747



Corner Index No. N.0-17.0

STATEMENT OF EVIDENCE

Northeast Corner of Sec. 22, T.141N., R.25W., 5th P.M., Cass County, MN

1871 Walker, Allen & Putnam, U.S. General Land Office, originally established this corner while surveying the subdivision lines of this township, and set wood post to mark the corner position with the following witnesses:

Tamarack	8"	N52°E	9 links (5.94')
Tamarack	9"	S42°E	7 links (4.62')
Tamarack	10"	N40°W	41 links (27.06')
Tamarack	5"	S12°W	10 links (6.60')

Information on file at the MN Historical Society, St. Paul, MN. Copies filed with the Cass County Highway Department/Surveyors Office (CCHD/SO)

1917 J. Flynn, Cass County Surveyor, (Survey Record No. 377, Survey Record Book "C", Page 35) while surveying for Saylor Road, found both original GLO bearing trees, and a "quarter post", but does not specify if the post was an original monument or not. He noted the following bearing trees:

Tamarack	8"	N52°E	5.94'	1871 BT, now is down
Tamarack	9"	S42°E	4.62'	1871 BT, found stub
Tamarack	10"	N40°W	27.06'	1871 BT, found stub
Tamarack	5"	S12°W	6.60'	1871 BT, found stub
Tamarack	12"	N25°E	47.4'	New BT marked
Tamarack	8"	S17°45'W	23.0'	New BT (stump)

Information on file at CCHD/SO

1941 R. DeFant, U.S. Forest Service (Form 874-9, USFS Records) found a cedar post in good condition, 18" above ground, which he noted was a county corner. A metal location poster was set on a tree (species not noted) 0.55 chains north.

USFS Records cited herein are on file at the Chippewa National Forest Supervisor's Office.

2020 A. Skattum, U.S. Forest Service, (Corner Restoration Book 1, Page 24, USFS Records) found no evidence of any of the previous bearing trees. The road survey by Flynn cited above shows the section corner and road centerline as being coincident at this point. Flynn's traverse ties together the N1/4 Corner of Section 22 and the N1/4 Corner of Section 23. The corner location was reestablished using Flynn's record distance from the North 1/4 corner of Section 23 for the longitudinal position, and holding the centerline of the road for the latitudinal position. A monument was set as shown on the face of this document. No suitable bearing trees were available for new witnesses.