



A000668745

OFFICE OF THE COUNTY RECORDER
CASS COUNTY, MINNESOTA
CERTIFIED, FILED, AND/OR
RECORDED ON

1/28/2021 10:33:26 AM

AS DOC #: A000668745

PAGES: 2

REC FEES: 0.00

KATHRYN M. NORBY
CASS COUNTY RECORDER

BY SF Dep TX#: 168663

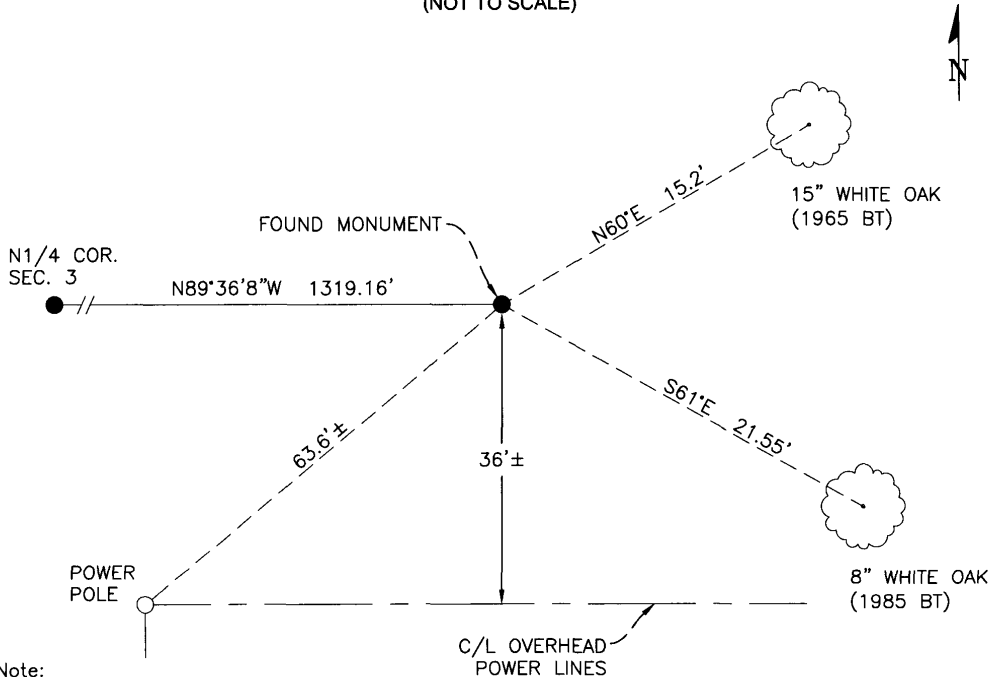
CERTIFICATE OF LOCATION OF GOVERNMENT CORNER

East 1/16 Corner of Section 3/34, Township 145 N, Range 29 W, 5th P.M.
County of Cass, State of Minnesota

At the corner location shown on the sketch :

- On 05/07/2020 found 1" iron post with brass cap, marked as described in 1934 GLO field notes, its top 6" above the ground and in good condition.
- left monument as found lowered monument removed monument (explain)
- On _____ set _____

SKETCH OF REFERENCE TIES (NOT TO SCALE)



Note:
Distances shown are horizontal
Bearings shown are geodetic

Sheet 1 of 2

Statement of evidence relative to this corner location is on the back of this page

I hereby certify that this survey, plan, or report was prepared by me or under my direct supervision and that I am a duly Licensed Land Surveyor under the laws of the state of Minnesota.

Aaron J. Skattum

Aaron J. Skattum
MN License No. 54139

12-28-2020
Date

Corner Index No. A.0-16.0
GCDB ID No. 460700

Cass County Coordinates
North Zone, NAD83(2011)
N: 322,529.988
E: 470,551.612





Corner Index No. A.0-16.0

STATEMENT OF EVIDENCE**East 1/16 Corner on the North line of Sec. 3, T.145N., R.29W., 5th P.M., Cass County, MN**

1873 P.H. Conger, US General Land Office did not set this corner during his original survey of this line.

1934 J. Curo, private surveyor (Curo Book 287, Page 23, on file at the Cass County Highway Department/Surveyor's Office CCHD/SO) subdivided the SE1/4 of Section 34 and notes this corner as being 1319.0' east of the north 1/4 corner of Section 3, but does not indicate a monument found or set. The notes are not specifically dated, but the work was likely done before the GLO resurvey in 1934.

1934 H.D. Craig, US General Land Office, during a dependent resurvey of the north line of this township, set an 1"x36" iron post with brass cap at proportionate distance and noted the following ties:

16" Red pine	N64.75'E	57 links (37.62')
7" Jack pine	S75.25'E	145 links (95.70')

Information on file at the MN Historical Society, St. Paul, MN. Copies filed with the Cass County Highway Department/Surveyor's Office (CCHD/SO).

1965 J. Ekstrom, US Forest Service, (Land Lines Book 1, page 12, USFS Records) found the GLO iron monument in good condition, and noted the following ties:

16" Red pine	N64.75'E	37.62'	1934 BT, found snag
7" Jack pine	S75.25'E	95.70'	1934 BT, found fallen snag
10" Jack pine	N04'W	27.1'	New BT
7" Oak	N60'E	15.2'	New BT
Steel signpost	West	7.5'	Set 6' long steel signpost

1974 C. Krause, US Forest Service, (Land Lines Book 1, page 12, USFS Records) found the GLO iron monument and noted the following ties:

11" Jack pine	N04'W	27.1'	1965 BT, found dead
7" Oak	N60'E	15.2'	1965 BT, found
Steel signpost	North	2.3'	8' long steel signpost set
10" Jack pine	N23'E	42.2'	New BT
10" Jack pine	S20'E	83.0'	New BT

1985 C. Krause & J. Allison, US Forest Service, (Land Lines Book 1, page 12, USFS Records) found the GLO iron monument and noted the following ties:

16" Red pine	N64.75'E	37.62'	1934 BT, found stub, scribe visible
7" Jack pine	S75.25'E	95.70'	1934 BT, found stump
10" Jack pine	N04'W	27.1'	1965 BT, found fallen down
7" Oak	N60'E	15.2'	1965 BT, found
10" Jack pine	N23'E	42.2'	1974 BT, found
10" Jack pine	S20'E	83.0'	1974 BT, found dead, standing
Steel signpost	West	7.5'	1965 signpost inplace
Steel signpost	North	2.3'	1974 signpost inplace
4" White oak	S61'E	21.55'	New BT

2008 J. Major, Northern Lights Surveying & Mapping, Inc., (Certificate of Survey #4061, on file at the CCHD/SO) shows a found GLO monument at this location.

2020 A. Skattum, US Forest Service, (Land Lines Book 30, page 78, USFS Records) found the GLO iron monument and noted the following ties:

10" Jack pine	N04'W	27.1'	1965 BT, now stump hole, bits of wood
15" Oak	N60'E	15.2'	1965 BT, good condition
10" Jack pine	N23'E	42.2'	1974 BT, now blown over
10" Jack pine	S20'E	83.0'	1974 BT, not found
Steel signpost	West	7.5'	1965 signpost inplace
Steel signpost	North	2.3'	1974 signpost inplace
8" White oak	S61'E	21.55'	1985 BT, good condition

US Forest Service records cited above are on file at the Chippewa National Forest Supervisor's Office, Cass Lake, MN.