



A000668744

OFFICE OF THE COUNTY RECORDER
CASS COUNTY, MINNESOTA
CERTIFIED, FILED, AND/OR
RECORDED ON

1/28/2021 10:33:25 AM

AS DOC #: A000668744

PAGES: 2

REC FEES: 0.00

KATHRYN M. NORBY
CASS COUNTY RECORDER

BY SF Dep TX#: 168663

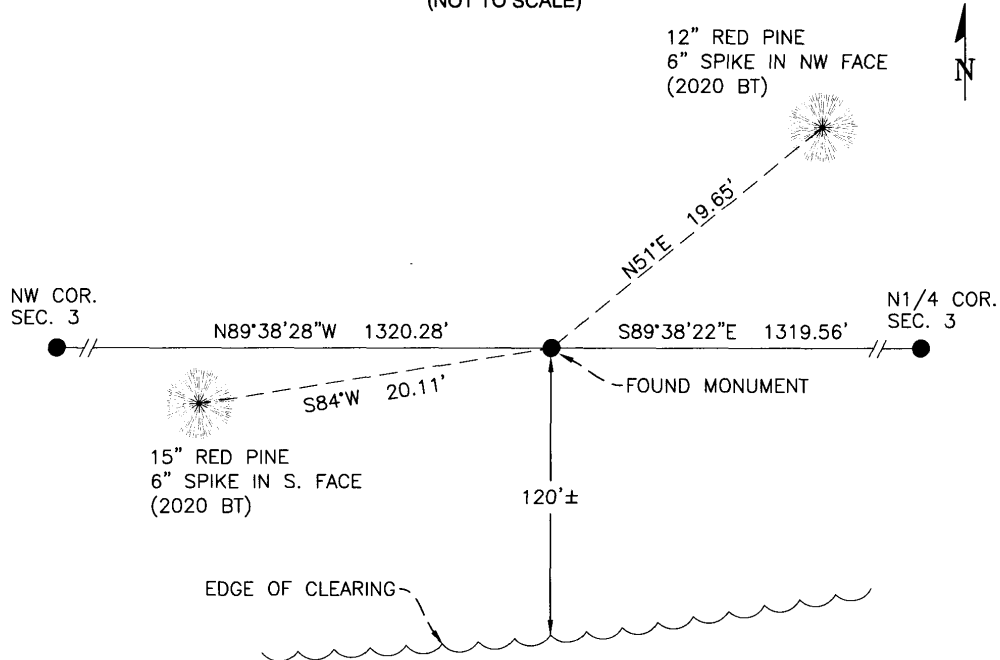
CERTIFICATE OF LOCATION OF GOVERNMENT CORNER

West 1/16 Corner of Section 3/34, Township 145 N., Range 29 W., 5th P.M.
County of Cass, State of Minnesota

At the corner location shown on the sketch :

- On 05/07/2020 found 1" iron post with brass cap, marked as described in 1934 GLO field notes, its top 7" above the ground and in good condition.
- left monument as found lowered monument removed monument (explain)
- On _____ set _____

SKETCH OF REFERENCE TIES (NOT TO SCALE)



Note:
Distances shown are horizontal
Bearings shown are geodetic

Sheet 1 of 2

Statement of evidence relative to this corner location is on the back of this page

I hereby certify that this survey, plan, or report was prepared by me or under my direct supervision and that I am a duly Licensed Land Surveyor under the laws of the state of Minnesota.

Aaron J. Skattum
MN License No. 54139

12-28-2020
Date

Corner Index No. A.0-14.0
GCDB ID No. 420700

Cass County Coordinates
North Zone, NAD83(2011)
N: 322,547.452
E: 467,912.944





Corner Index No. A.0-14.0

STATEMENT OF EVIDENCE

West 1/16 Corner on the North line of Sec. 3, T.145N., R.29W., 5th P.M., Cass County, MN

- 1873 P.H. Conger, US General Land Office did not set this corner during his original survey of this line.
- 1934 H.D. Craig, US General Land Office, during a dependent resurvey of the north line of this township, set an 1"x36" iron post with brass cap at proportionate distance and noted the following ties:

6" Jack pine	S27.75°W	15 links (9.90')
8" Jack pine	N25.5°W	176 links (116.16')

Information on file at the MN Historical Society, St. Paul, MN. Copies filed with the Cass County Highway Department/Surveyor's Office (CCHD/SO).

- 2020 A. Skattum, US Forest Service, (Land Lines Book 30, page 78, USFS Records) found the GLO iron monument GLO iron monument and noted the following ties:

6" Jack pine	S27.75°W	9.90'	1934 BT, now mostly decayed stump with some solid wood, no marks visible
8" Jack pine	N25.5°W	116.16'	1934 BT, now stump hole
12" Red pine	N51°E	19.65'	New BT
15" Red pine	S84°W	20.11'	New BT
Signpost	North	1.2'	New 6' long Carsonite signpost set

US Forest Service records cited above are on file at the Chippewa National Forest Supervisor's Office, Cass Lake, MN.