



A000668741

OFFICE OF THE COUNTY RECORDER  
CASS COUNTY, MINNESOTA  
CERTIFIED, FILED, AND/OR  
RECORDED ON

1/28/2021 10:33:22 AM

AS DOC #: A000668741

PAGES: 2

REC FEES: 0.00

KATHRYN M. NORBY  
CASS COUNTY RECORDER

BY SF Dep TX#: 168663

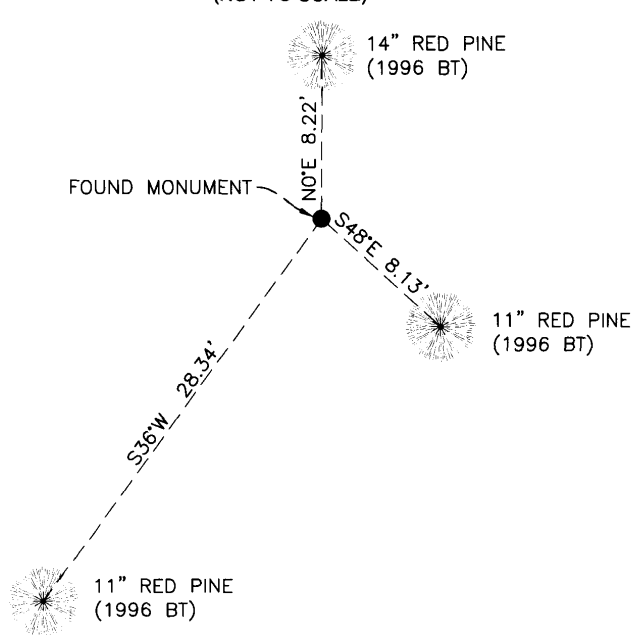
### CERTIFICATE OF LOCATION OF GOVERNMENT CORNER

North 1/4 Corner of Section 4, Township 145 N, Range 29 W, 5th P.M.  
County of Cass, State of Minnesota

At the corner location shown on the sketch :

- On 05/04/2020 found 2" iron post with brass cap, marked as described in 1934 GLO field notes, its top 8" above the ground and in good condition.
- left monument as found     lowered monument     removed monument (explain)
- On \_\_\_\_\_ set \_\_\_\_\_

#### SKETCH OF REFERENCE TIES (NOT TO SCALE)



Note:  
Distances shown are horizontal  
Bearings shown are geodetic

Sheet 1 of 2

Statement of evidence relative to this corner location is on the back of this page

I hereby certify that this survey, plan, or report was prepared by me or under my direct supervision and that I am a duly Licensed Land Surveyor under the laws of the state of Minnesota.

*Aaron J. Skattum*  
Aaron J. Skattum  
MN License No. 54139

12-28-2020  
Date

Corner Index No. A.0-11.0  
GCDB ID No. 340700

Cass County Coordinates  
North Zone, NAD83(2011)  
N: 322,593.266  
E: 463,951.348





Corner Index No. A.0-11.0

STATEMENT OF EVIDENCE

North 1/4 Corner of Sec. 4, T.145N., R.29W., 5th P.M., Cass County, MN

1873 P.H. Conger, US General Land Office, originally established this corner while surveying the north line of the township, and set wood post to mark the corner position with the following witnesses:

8" Jack pine	S49°E	8 links (5.28')
12" Jack pine	N73°W	23 links (15.18')

Information on file at the MN Historical Society, St. Paul, MN. Copies filed with the Cass County Highway Department/Surveyor's Office (CCHD/SO).

1934 H.D. Craig, US General Land Office, during a dependent resurvey of the north line of this township, reestablished this corner from the remains of the original bearing trees and set a 2"x36" iron post with brass cap, noting the following ties:

11" Jack pine	S49°E	8 links (5.28')	1873 BT, found snag with blaze
20" Jack pine	N73°W	23 links (15.18')	1873 BT, found stump with scribes
22" Red pine	N14°E	84 links (55.44')	New BT
5" Jack pine	S58°W	24 links (15.84')	New BT

Information on file at the CCHD/SO.

1996 R. Main, US Forest Service, (Corner Book 1, page 8, USFS Records) found the GLO iron monument and noted the following ties:

7" Red pine	S36°W	28.34'	New BT
7.5" Red pine	S48°E	8.13'	New BT
10" Red pine	N0°E	8.22'	New BT
10" Red pine	South	490'±	Set FSLP on tree

2020 A. Skattum, US Forest Service, (Land Lines Book 30, page 77, USFS Records) found the GLO iron monument in good condition and noted the following ties:

7" Red pine	S36°W	28.34'	1996 BT, good condition
7.5" Red pine	S48°E	8.13'	1996 BT, good condition
10" Red pine	N0°E	8.22'	1996 BT, good condition
10" Red pine	South	490'±	1996 FSLP inplace
Signpost	North	0.6'	New 6' long Carsonite signpost

US Forest Service records cited above are on file at the Chippewa National Forest Supervisor's Office, Cass Lake, MN.