



A000668727

OFFICE OF THE COUNTY RECORDER
CASS COUNTY, MINNESOTA
CERTIFIED, FILED, AND/OR
RECORDED ON

1/28/2021 10:33:08 AM

AS DOC #: A000668727

PAGES: 2

REC FEES: 0.00

KATHRYN M. NORBY
CASS COUNTY RECORDER

BY SF _____ Dep TX#: 168663

Index No. C.0-9.0

CERTIFICATE OF LOCATION OF GOVERNMENT CORNER

EAST QUARTER Corner of Section 5, Township 136, Range 31, 5TH P.M.

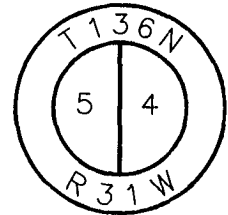
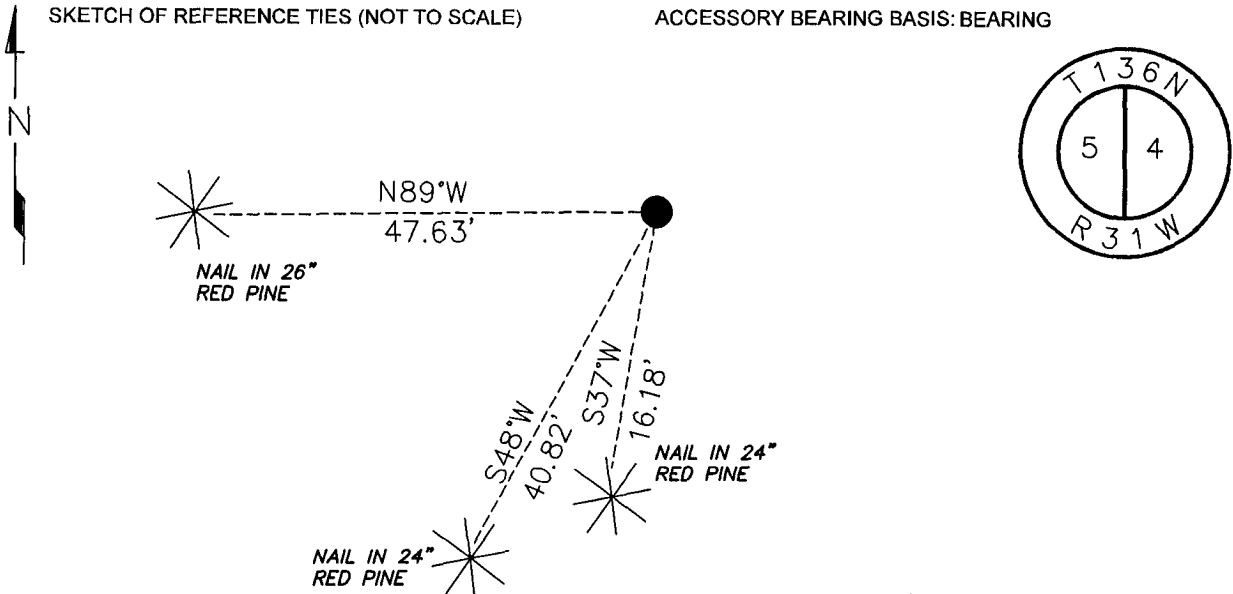
STATE OF MINNESOTA, County of CASS

At the location shown on the sketch:

- On _____ found _____
- left monument as found, lowered monument, removed monument (explain)
- On 11/16/2020 placed an 1/2 INCH PIPE WITH CAP 45875

SKETCH OF REFERENCE TIES (NOT TO SCALE)

ACCESSORY BEARING BASIS: BEARING



I hereby certify that this document was prepared by me or under my direct supervision and that I am a duly Licensed Land Surveyor under the laws of the State of Minnesota

Paul Herkenhoff
PAUL HERKENHOFF

N= 270281.703 E= 465331.444

DATUM= CASS COUNTY SOUTH

NAD 83/96 ADJ.

US SURVEY FT.

Date 11/24/2020 License No. 45875

Statement of evidence relative to this corner is on back of page.





T136N R31W 5th PM * Index No. C.0-9.0

Statement of Evidence

East Quarter corner of Section 5, Township 136 North, Range 31 West, 5th Principal Meridian.

Sept. R.Cronk, General Land Office (GLO) Deputy Surveyor, in the notes of the subdivision of Township 136
1870 North, Range 31 West, set a post for the original corner and referenced it as follows:
20" Norway Pine S 77°W 25 links 18" Norway Pine S 35° E 40 links

Said records are on file with the Minnesota Historical Society, St. Paul, Minnesota, copies are filed with the Cass County Surveyor's Office (CCSO).

Nov.
2020 Lakes Area Surveying (LAS) searched for all previous evidence, finding nothing. This corner falls in a recently logged area. LAS established this corner based on a lost position between the Northeast Corner of Section 5 and the Southeast Corner of Section 5. Analysis of the recovered record data, field evidence and survey measurements, indicates that the monument set in November of 2020 by LAS is the accepted location of this corner