



A000667562

OFFICE OF THE COUNTY RECORDER
CASS COUNTY, MINNESOTA
CERTIFIED, FILED, AND/OR
RECORDED ON

12/22/2020 12:48:05 PM

AS DOC #: A000667562

PAGES: 2

REC FEES: 0.00

KATHRYN M. NORBY
CASS COUNTY RECORDER

BY SF _____ Dep TX#: 167739

Twp 142 Rge 28 Index No. V.0-21.0

CERTIFICATE OF LOCATION OF GOVERNMENT CORNER

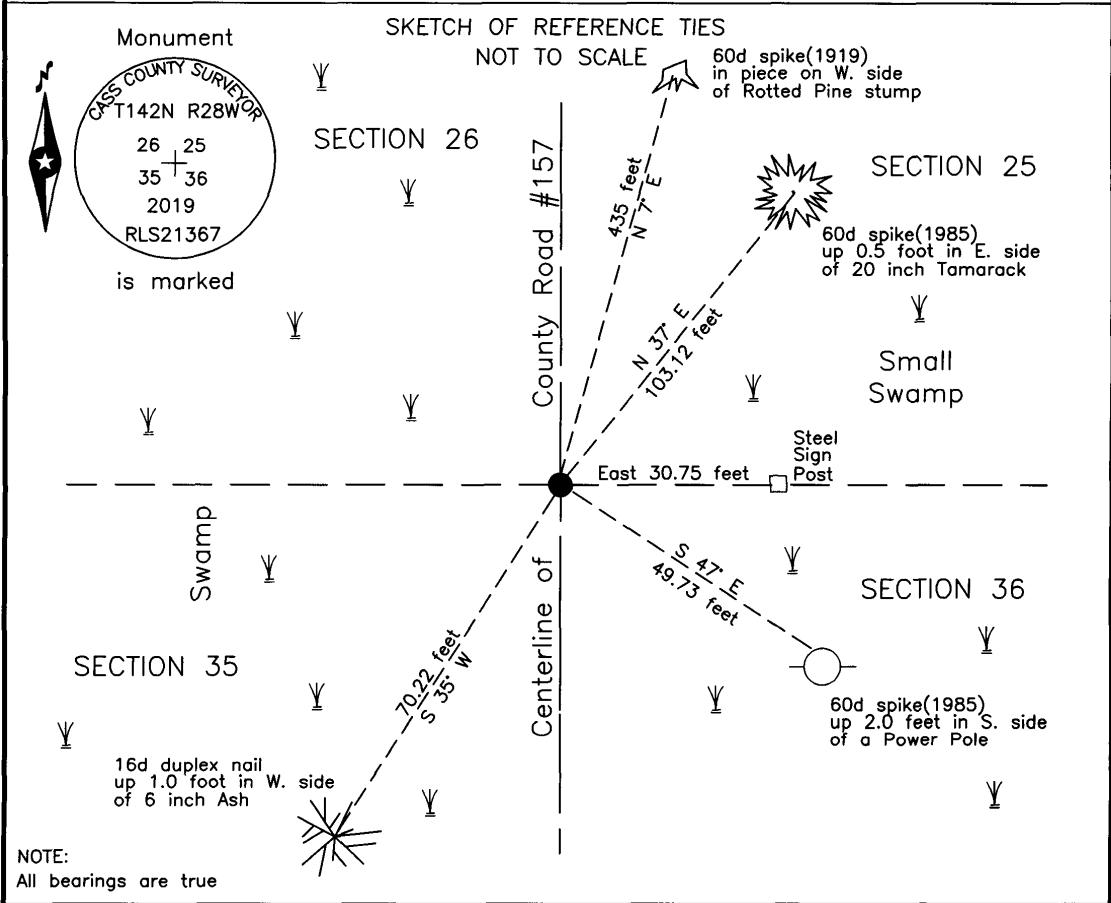
Northeast corner of Section 35, Township 142 N., Range 28 W., 5th P.M.
State of Minnesota, County of Cass

At the corner location shown on the sketch:

On 14 June 2018 found a 2 inch outside diameter GLO iron pipe with flanges,
1 foot long, down 3.4 feet, on centerline County Road #157.

left monument as found lowered monument removed monument (explain)

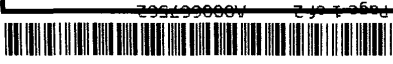
On 5 Sept 2014 placed an 1 inch by 30 inch aluminum tube with aluminum cap,
down 0.5 foot, 1 foot± east of centerline County Road #174.



Statement of evidence relative to this corner location is on the back of this page.

I hereby certify that this survey, plan or report was prepared by me or under my direct supervision and that I am a duly Licensed Land Surveyor under the laws of the State of Minnesota.

Terry L. Freeman, Cass County Surveyor
Date 12/22/20 MN License No. 21367



Index No. V.0-21.0Statement of Evidence**Northeast corner of Section 35, Township 142 North, Range 28 West, 5th Principal Meridian.**

- Feb. 1874 P.H. Conger, General Land Office (GLO) Deputy Surveyor, in the notes of the subdivision of Township 142 North, Range 28 West, corner in pond, no trees near.
The above records are on file with the Minnesota Historical Society, St. Paul, Minnesota, copies are filed with the Cass County Highway Department, Surveyor's Office (CCHD/SO).
- July 1917 E.B. Horst, LS 376, Deputy County Surveyor, Survey Record #371, Book B, page 602 and Curo Book 151, page 17, on file in the CCHD/SO, states "I send Wight to erect a flag at stake near cor to secs 25-26-35-36 being in S.E. part of Muskeag(sic) bog in center of road. With transit on ¼ cor I sight S. on true line, sight N. and turn W 0°10' and sight on stake. Set transit on stake and set" the following:
6" Cedar Post SW 46.7 feet 6" Cedar Post SE 46.7 feet
- July 1919 E.G. Harrington, U.S. Cadastral Engineer, GLO, Dependent Resurvey of the North Boundary and Subdivisional Lines Township 142 North, Range 28 West, on file with the Minnesota Historical Society, St. Paul, Minnesota, copies are filed with the CCHD/SO, state "The cor. of secs. 25, 26, 35, and 36, which is marked by a wooden hub in center of road. North and alongside of stake set an iron post, 3 ft. long, 2 ins. diam., 36 ins. In ground, for the cor." Also states "According to the original records no bearing trees were marked at this cor., and the wooden hub is accepted as being at the true position for the cor., for the reason that this location checks out with items of topography as given in the notes. This cor. is reported as being in a pond and the distances to the edge of the pond are noted to the N., S., E., and W. The distances as reported check out very closely to the distances actually determined on my lines. The hub is recognized as being at the true position for the cor. by the adjoining land owners." He adds new bearing trees as follows:
18" Norway Pine N 6°45' E 658 links (434.28 feet) 14" Norway Pine S 66°15' E 466 links (307.56 feet)
14" Norway Pine S 36°45' W 518 links (341.88 feet)
- Oct. 1921 E.B. Horst, LS 376, Deputy County Surveyor, Survey Record #494, Book D, page 6 and Curo Book 151, page 17, on file in the CCHD/SO, states "2623 the U.S. I.M. at the cor. of secs 25-26-35-36."
- June 1932 S.S. Walker, Engineers Assistant, C.A.R. #4, Job #321, Ditch Shelf 3, Book 173, page 80, on file in the CCHD/SO, indicates corner and 4'x 4" wood cor. and witnesses as follows:
6" Fence Post NW 60.0 feet 2" Cedar Post SW 63.6 feet
Notes corners replaced Oct. 22, 1932.
- May 1995 C. Krause, technician, United States Department of Agriculture Forest Service(USFS), T 142N R 28 W, Book 1, page 19, on file in the USFS Cass Lake Office, states "Fd. 2 inch iron pipe 3.2 ft. below surface of County Rd #157. Pipe is concrete filled, cap has been removed. Placed magnetic pellet on top of monument. Fence runs East of monument." Witnessed as follows:
25" R. Pine(1919) N 7° E 434.61 feet 18.5" Tamarack N 37° E 103.12 feet
Power Pole S 47° E 49.73 feet Steel Sign Post East 30.75 feet
- June 2018 B. Hippen, technician, records of the CCHD/SO, prior to reconstruction of County Road #157, found 2 inch GLO monument, no brass cap, down 3.4 foot, on centerline of County Road #157 and USFS magnetic pellet, removed both and witnessed as follows:
Pine stump(1919) N 7° E 435 feet 20" Tamarack(1995) N 37° E 103.12 feet
Power Pole(1985) S 47° E 49.73 feet Steel Sign Post(1995) East 30.75 feet
6" Ash S 35° W 70.22 feet
- Sept. 2020 B. Hippen, technician, records of the CCHD/SO, placed the recovered 2 inch GLO pipe with flanges, down 36 inches and set a 1 inch outside diameter by 30 inch long aluminum tube with aluminum cap, on top of the GLO pipe, cap down 0.5 foot, on centerline of County Road #157 from witnesses.

The monument, recovered and established references for the position are shown on the face of this document.

Analysis of the recovered record data, field evidence and survey measurements, indicates that the monument recovered by the CCHD/SO in 2018 is the accepted location of this corner.

County Coordinates (Cass County North)

Northing 201547.83

Easting 508951.36