



A000667035

OFFICE OF THE COUNTY RECORDER
CASS COUNTY, MINNESOTA
CERTIFIED, FILED, AND/OR
RECORDED ON

12/11/2020 10:44:23 AM

AS DOC #: A000667035

PAGES: 2

REC FEES: 0.00

KATHRYN M. NORBY
CASS COUNTY RECORDER

BY SF Dep TX#: 167404

Twp 142 Rge 28 Index No. X.0-21.0

CERTIFICATE OF LOCATION OF GOVERNMENT CORNER

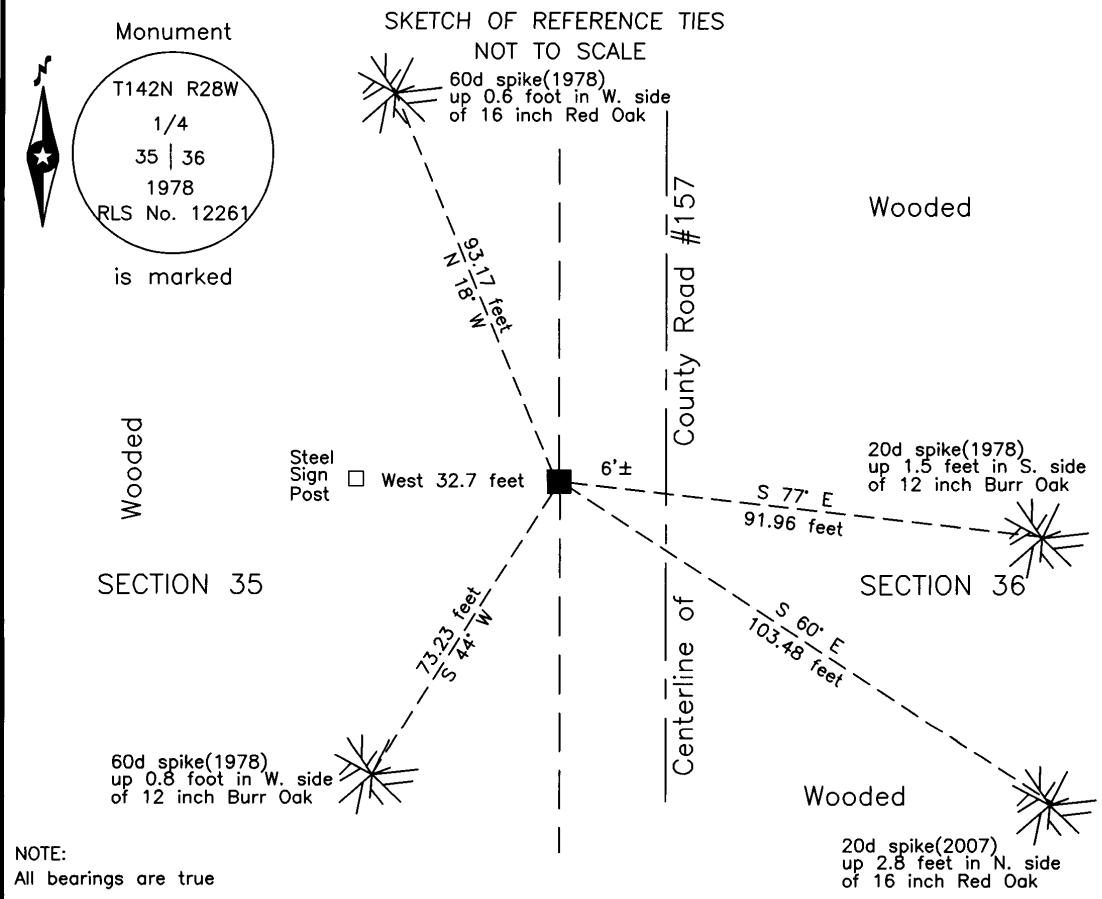
East Quarter corner of Section 35, Township 142 N., Range 28 W., 5th P.M.
State of Minnesota, County of Cass

At the corner location shown on the sketch:

On 14 May 2019 found a 6 inch square concrete post with USFS brass cap,
down 3.0 feet, 6 feet± west of centerline County Road #157.

left monument as found lowered monument removed monument (explain)

On 5 Sept 2014 placed the 6 inch concrete monument with 1978 USFS brass cap,
down 0.5 foot, 1 foot± east of centerline County Road #174.



NOTE:
All bearings are true

Statement of evidence relative to this corner location is on the back of this page.

I hereby certify that this survey, plan or report was prepared by me or under my direct supervision and that I am a duly Licensed Land Surveyor under the laws of the State of Minnesota.

Terry L. Freeman
Terry L. Freeman, Cass County Surveyor
Date 12/10/20 MN License No. 21367

Statement of Evidence

East Quarter corner of Section 35, Township 142 North, Range 28 West, 5th Principal Meridian.

May 2007 T.J. Kroschel, LS 44490, found a 1 inch outside diameter iron pipe monument, 5 feet, more or less, west of centerline of County Road #157. A Certificate of Location of Government Corner was recorded with the Cass County Recorder as Document Number A000540869 on August 5, 2008.

Supplemental Data not listed on above Certificate

May 2019 B. Hippen, technician, records of the Cass County Highway Department, Surveyor's Office (CCHD/SO), prior to reconstruction of County Road #157, found a 1 inch iron pipe, down 1.8 feet, 6 feet, more or less, west of centerline, after removing iron pipe, found a 2.25 inch, United States Department of Agriculture, Forest Service(USFS) brass capped monument, down 2.0 feet, 8 feet, more or less, west of centerline, after removing monument, found the 1978 USFS 6 inch square concrete monument with brass cap, down 3.0 feet, 6 feet, more or less, west of centerline, with remains of GLO pipe, adjacent to monument, after removing concrete monument and pipe, place the flange of the 1919 monument at the base of the hole and witnessed as follows:

16" Red Oak	N 18° W	91.93 feet(1978)	12" Burr Oak	S 77° E	91.96 feet(1978)
12" Burr Oak	S 44° W	73.23 feet(1978)	16" Red Oak	S 60° E	103.48 feet(2007)
Steel Sign Post	West	32.7 feet			

Sept. 2020 B. Hippen, technician, records of the CCHD/SO, reset the 1978 USFS 6 inch square concrete monument with brass cap, down 0.5 foot, place remains of 1 inch GLO pipe on north and south sides of concrete monument, 6 feet, more or less, west of centerline of County Road #157, from witnesses.

The monument, recovered and established references for the position are shown on the face of this document.

Analysis of the recovered record data, field evidence and survey measurements, indicates that the monument recovered by the CCHD/SO in 2019 is the correct perpetuation of this corner.

County Coordinates (Cass County North)

Northing 199014.07
Easting 508937.10