

Page 1 of 2  
A000667034



**A000667034**  
**OFFICE OF THE COUNTY RECORDER**  
**CASS COUNTY, MINNESOTA**  
**CERTIFIED, FILED, AND/OR**  
**RECORDED ON**  
**12/11/2020 10:44:22 AM**  
**AS DOC #: A000667034**  
**PAGES: 2**  
**REC FEES: 0.00**  
**KATHRYN M. NORBY**  
**CASS COUNTY RECORDER**  
**BY SF Dep TX#: 167404**

Twp 143 Rge 29 Index No. R.0-19.0

**CERTIFICATE OF LOCATION OF GOVERNMENT CORNER**

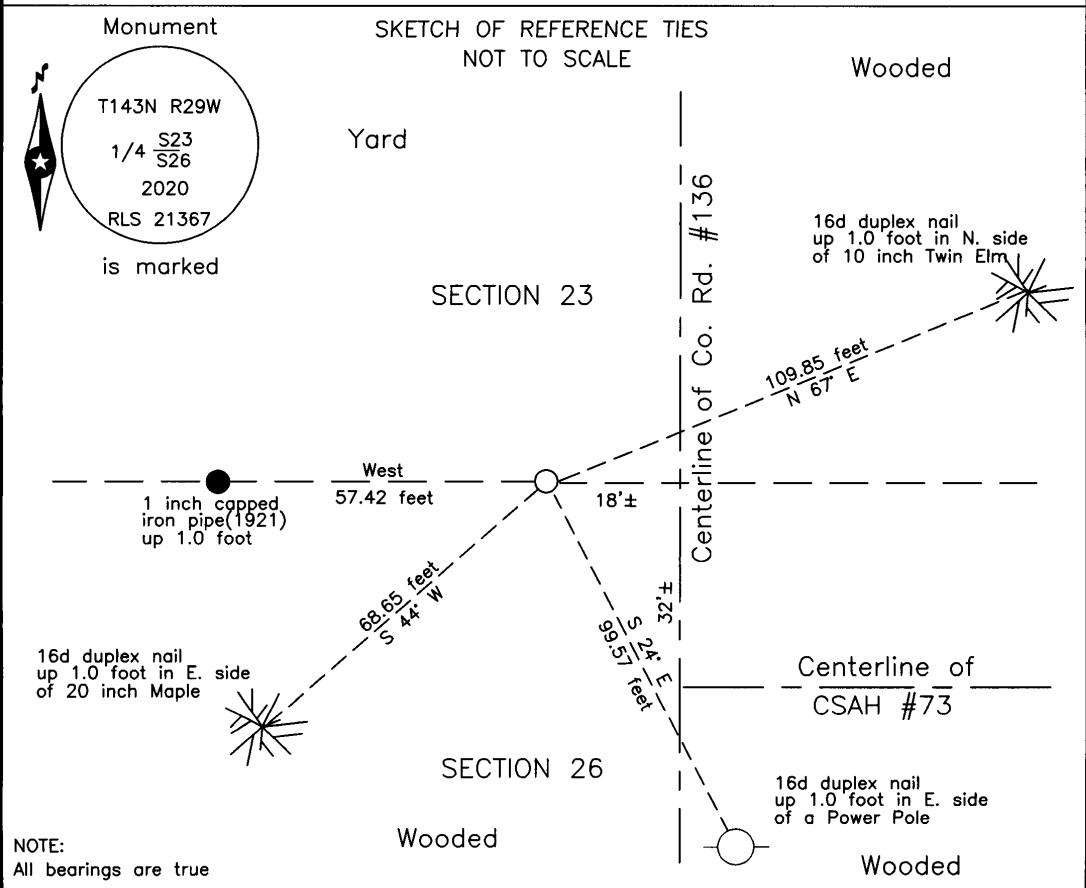
North Quarter corner of Section 26, Township 143 N., Range 29 W., 5th P.M.  
State of Minnesota, County of Cass

At the corner location shown on the sketch:

On 23 July 2012 found a 7/8 inch outside diameter iron pipe, capped RLS 21367.  
south of the centerline of CSAH #73.

left monument as found     lowered monument     removed monument (explain)

On 16 Oct 2020 placed a 1 inch by 30 inch aluminum tube with aluminum cap  
down 0.3 foot, 18 feet± west of new centerline of County Road #136.



Statement of evidence relative to this corner location is on the back of this page.

I hereby certify that this survey, plan or report was prepared by me or under my direct supervision and that I am a duly Licensed Land Surveyor under the laws of the State of Minnesota.

Terry L. Freeman, Cass County Surveyor  
Date 12/10/20 MN License No. 21367

**Index No. R.0-19.0**Statement of Evidence**North Quarter corner of Section 26, Township 143 North, Range 29 West, 5th Principal Meridian.**

- Oct. 1873 P.H. Conger, General Land Office (GLO) Deputy Surveyor, in the notes of the subdivision of Township 143 North, Range 29 West, set a post for the original corner and referenced it as follows:  
14" Sugar Maple N 52° W 8 links(5.28 feet) 6" Ironwood S 47° E 23 links(15.18 feet)  
The above records are on file with the Minnesota Historical Society in St. Paul, Minnesota, copies are filed with the Cass County Highway Department, Surveyor's Office (CCHD/SO).
- May 1903 W.L. Shuler, Observer, United States Army Corps of Engineers (COE), survey map of the Leech Lake Reservoir on file with the United States Department of Agriculture, Forest Service (USFS) in Cass Lake, Minnesota, Field Book A1-361, photo 595, states searched for ¼ sec. cor. bet. 23 & 26 T 143 R 29 but found no trace of same.
- Sept. 1918 A.L. Kimmell, U.S. Cadastral Engineer, GLO, Reestablishment of a Portion of the Exterior and Subdivisional Lines Township 143 North, Range 29 West, notes page 16, on file with the Minnesota Historical Society, St. Paul, Minnesota, copies are filed with the CCHD/SO, states "after diligent search I fail to find any evidence of the old cor." He set an iron post at proportional position, 3 feet long, 1 inch diameter, 28 inches in the ground, for the corner, with brass cap. He notes bearing trees as follows:  
14" Maple S 59° W 39 links(25.74 feet) 6" Maple N 72 1/2° W 67 links(44.22 feet)
- April 1935 R. Pierrilee, Estimator, Civilian Conservation Corps, on form 874-9 on file with the United States Department of Agriculture, Forest Service (USFS), Cass Lake Office, found GLO corner in good condition at edge of ditch. Placed metal location poster on a cedar sign post on the East side of tree at the corner.
- 1960 United States Department of the Interior, Bureau of Indian Affairs(BIA), Project No. 132-25, copy on file in the CCHD, indicates a brass cap in place for this corner, south of centerline intersection and witnesses as follows:  
Tree SW 75.4 feet Tree SE 76.7 feet
- Nov. 1972 R.F. Schneider, LS #5740, Plat of SUGAR POINT, on file in the Cass County Recorders Office, as Document #213267, indicates an iron pipe monument at the subject corner.
- Oct. 1974 J. Worcester, Engineer, Cass County Highway Department, CCHD Road Plan S.A.P. 11-673-01, on file in the CCHD, indicates found 2 inch I.M., 17.72 feet West and 33 feet North of engineering station 0+00. (P.I. of #136 and #73.)
- March 2002 P.B. Schoborg, LS #14700, Certificate of Survey for Northern Pines Realty, on file in the CCHD/SO, indicates iron monument in place at the subject corner.
- Dec. 2003 D.J. Warner, LS #42656, Certificate of Survey for Crowe, on file in the Northern Engineering and Consulting Inc.(NECI), Walker Office, copy on file in the CCHD/SO, shows monument found.
- Aug. 2005 J.J. Bunkowske, LS #24606, Certificate of Survey for Mable Forsberg, on file in the NECI, Walker Office, copy on file in the CCHD/SO, indicates monument found.
- Jan. 2006 D.J. Warner, LS #42656, Certificate of Survey for William Porter, on file in the NECI, Grand Rapids Office, copy on file in the CCHD/SO, indicates monument found.
- May 2006 T.L. Freeman, LS #21367, Certificate of Survey for Wells Fargo Bank, on file in the NECI, Walker Office, copy on file in the CCHD/SO, indicates iron monument set.
- July 2012 B. Hippen, technician, records of the CCHD/SO, found a 7/8 inch outside diameter iron pipe, capped RLS 21367 and located it with the Global Positioning System(GPS)
- Oct. 2020 B. Hippen, technician, records of the CCHD/SO, set an aluminum tube with aluminum cap, at the position of the Iron pipe found in 2012, down 0.3 foot, 18 feet, more or less, west of the new centerline of County Road #137 and 32 feet, more or less, north of the new centerline of CSAH #73 and witnessed as follows:  
P. Pole S 24° E 99.57 feet 10" Twin Elm N 67° E 109.85 feet  
20" Maple S 44° W 68.65 feet

The monument, together with the recovered and established references for the position are shown on the face of this document.

**Analysis of the recovered record data, field evidence and survey measurements, indicates that the monument set by the CCHD/SO is the accepted location of this corner.**

**County Coordinates (Cass County North)****Northing 238393.57****Easting 474695.73**