

Page 1 of 2
A000664200



A000664200
OFFICE OF THE COUNTY RECORDER
CASS COUNTY, MINNESOTA
CERTIFIED, FILED, AND/OR
RECORDED ON
9/28/2020 10:51:10 AM
AS DOC #: A000664200
PAGES: 2
REC FEES: 0.00
KATHRYN M. NORBY
CASS COUNTY RECORDER
BY SF Dep TX#: 165194

Twp 143 Rge 28 Index No. J.0-17.0

CERTIFICATE OF LOCATION OF GOVERNMENT CORNER

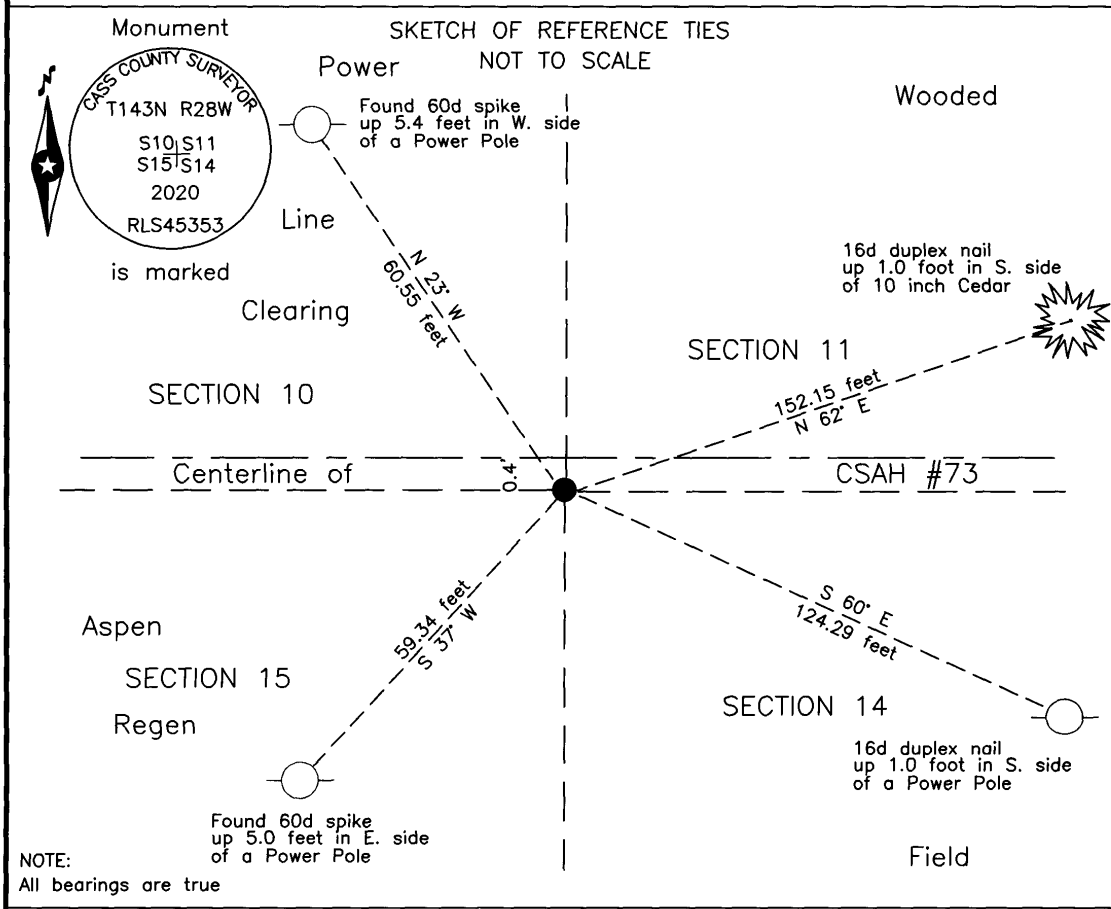
Northeast corner of Section 15, Township 143 N., Range 28 W., 5th P.M.
State of Minnesota, County of Cass

At the corner location shown on the sketch:

On 19 Mar 2019 found a 7/8 inch outside diameter iron pipe, capped RLS 45353,
down 0.2 foot, 0.5 foot south of centerline CSAH #73.

left monument as found lowered monument removed monument (explain)

On 10 Sept 2020 placed an 1 inch by 30 inch aluminum tube with aluminum cap,
down 0.05 foot, 0.5 feet north of new centerline CSAH #73.



Statement of evidence relative to this corner location is on the back of this page.

I hereby certify that this survey, plan or report was prepared by me or under my direct supervision and that I am a duly Licensed Land Surveyor under the laws of the State of Minnesota.

Corey J. Hendershott
Corey J. Hendershott, Surveyor
Date 9/14/2020 MN License No. 45353

Index No. J.0-17.0Statement of Evidence**Northeast corner of Section 15, Township 143 North, Range 28 West, 5th Principal Meridian.**

- Oct. 1873 P.H. Conger, General Land Office (GLO) Deputy Surveyor, in the notes of the subdivision of Township 143 North, Range 28 West, set a post for the original corner and referenced it as follows:

6" Cedar	N 77° W	48 links (31.68 feet)	6" Fir	N 46° E	62 links (40.92 feet)
7" Cedar	S 65° E	39 links (25.74 feet)	8" Fir	S 42° W	100 links (66.00 feet)

The above records are on file with the Minnesota Historical Society in St. Paul, Minnesota, copies are filed with the Cass County Highway Department, Surveyor's Office (CCHD/SO).
- Feb. 1916 Gould Township Road Order, Supervisors' Road Order, image file 3, on file in the CCHD/SO, indicates a road following said County road South one mile to the North east corner of Section Fifteen Township 143 Range 28: establishing a road thence South one mile on the section line between sections 14 and 15.
- April 1916 E.B. Horst, LS 376, Deputy County Surveyor, Survey Record #486, Book C, page 555 and Curo Book 54B, page 55, on file in the CCHD/SO, states "I find U.S. B.T. cedar 6 N 77° W 48. From this tree I take course & measure required dist. And drive 4" cedar stake 3.0' long at pt. for cor."
- June 1916 H.F. Baldwin, Deputy County Surveyor, Survey Record #288, Book B, page 238, and Curo Book 77, page 55, on file in the CCHD/SO, states "section corner of 10,11,14,15 where only one of the U.S. trees remain, namely Cedar 6 inch, N 77° W 48 links (= 31.68 feet). This tree was O.K.d by Deputy County Surveyor E.B. Horst in April 1916: We set hub in true position for section corner and start random line South." Pictorial on page 224 indicates Iron Mon. at the subject corner.
- April 1917 Gould Township Road Order, Supervisors' Road Order, image file 2, on file in the CCHD/SO, indicates a road beginning at the subject corner and running west 1 mile.
- Oct. 1939 J.S. Harrison, Forest Highway #2, Book 109, page 95 and copied in Project 11-615-01, Book 2, page 35, on file in the Cass County Highway Department (CCHD), indicates the subject corner assumed in line with fence line south and placed where old resident remembered seeing it.
- Nov. 1962 D. Cole, LS 1286, Cass County Engineer, CSAH #8, State Project No. 11-608-03, on file in the CCHD, indicates the subject corner assumed on road east and west and fence line south, 1335.6 feet west of centerline P.O.T. Station 642+26.3.
- Dec. 1975 J.R. Worcester, Cass County Engineer, CSAH #73, State Project No. 11-673-01, on file in the CCHD, indicates the subject corner assumed on centerline Township Road North and fence line south at centerline P.I. Station 371+04.4 which is witnessed as follows:

6" Ash	NNW	129.7 feet	6" Bals.	NE	156.4 feet
4" Pop.	NNE	141.8 feet			
- Aug. 2018 C.J. Hendershott, LS 45353, Certificate of Survey for Wake Estate, on file in the CCHD/SO, indicates a ¾ inch iron pipe with plastic cap stamped 45353 was set at the subject corner.
- March 2019 B. Hippen, technician, records of the CCHD/SO, found a 7/8 inch outside diameter iron pipe, capped RLS 45353, down 0.2 foot, 0.5 foot, south of centerline CSAH #73 and witnessed as follows:

Power Pole	N 23° W	60.55 feet	10" Cedar	N 62° E	152.15 feet
Power Pole	S 37° W	59.34 feet	Power Pole	S 60° E	124.29 feet
- Aug. 2020 B. Hippen, technician and F. Murray, equipment operator, records of the CCHD/SO, prior to reconstruction of CSAH #73, excavated a 10 foot east-west by 10 foot north-south area based on centerline intersections. The dig was 6 feet deep to natural soil. No evidence of the original stake or subsequent corner monumentation was recovered.
- Sept. 2020 B. Hippen, technician, records of the CCHD/SO, set a 1 inch by 30 inch aluminum tube with aluminum cap, Cass County monument from the witness trees after County Road construction was completed, down 0.05 foot, 0.4 feet, south of the new centerline of CSAH #73.

The monument, together with the recovered and established references for the position are shown on the face of this document.

Analysis of the recovered record data, field evidence and survey measurements, indicates that the monument recovered by the CCHD/SO is the accepted location of this corner.

County Coordinates (Cass County North)

Northing 248935.21

Easting 504409.61