



A000663577

OFFICE OF THE COUNTY RECORDER
CASS COUNTY, MINNESOTA
CERTIFIED, FILED, AND/OR
RECORDED ON

9/10/2020 11:48:00 AM

AS DOC #: A000663577

PAGES: 2

REC FEES: 0.00

KATHRYN M. NORBY
CASS COUNTY RECORDER

BY NG Dep TX#: 164742

Page 1 of 2
A000663577

Twp 142 Rge 28 Index No. T.0-21.0

CERTIFICATE OF LOCATION OF GOVERNMENT CORNER

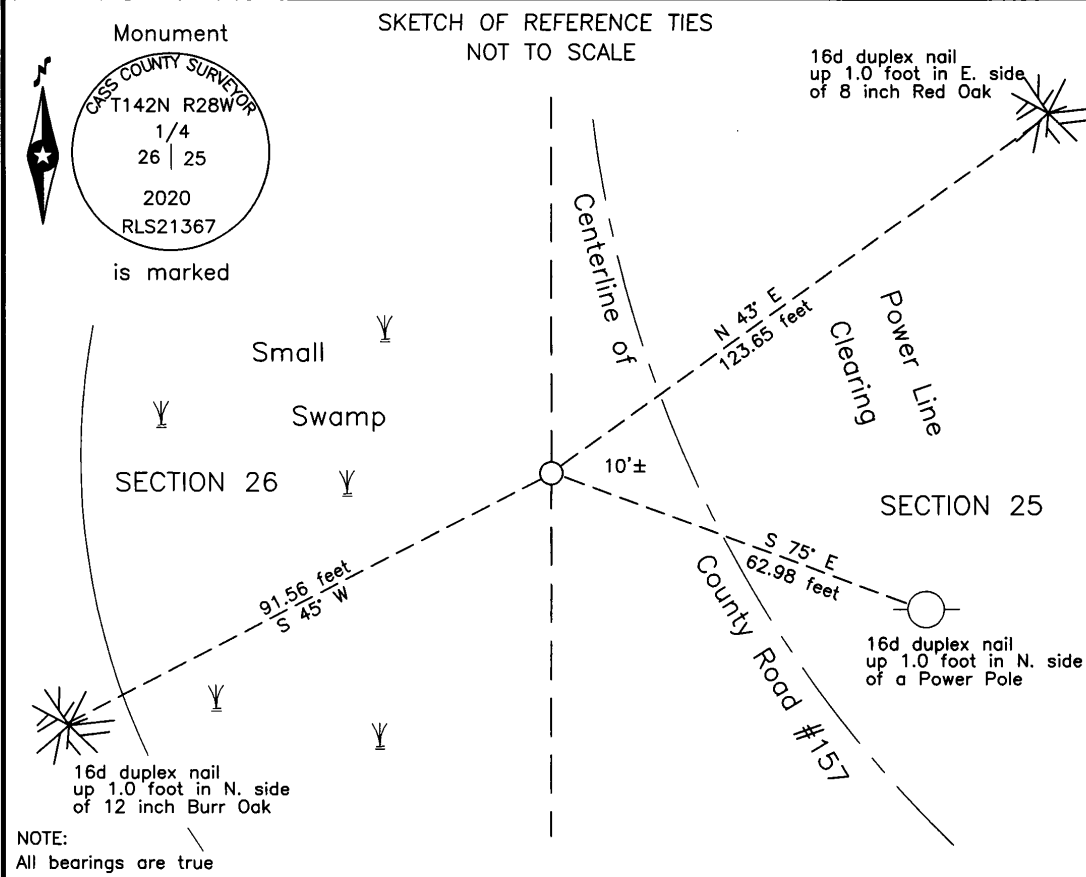
East Quarter corner of Section 26, Township 142 N., Range 28 W., 5th P.M.
State of Minnesota, County of Cass

At the corner location shown on the sketch:

On 14 May 2019 found a rust ring, vertical for 0.8 foot and base flanges from the 1919 monument, down 3.0 feet, 12 feet± west of centerline County Road #157.

left monument as found lowered monument removed monument (explain)

On 3 Sept 2020 placed an 1 inch by 30 inch aluminum tube with aluminum cap, down 0.5 foot, 10 feet± west of new centerline County Road #157.



Statement of evidence relative to this corner location is on the back of this page.

I hereby certify that this survey, plan or report was prepared by me or under my direct supervision and that I am a duly Licensed Land Surveyor under the laws of the State of Minnesota.

Terry L. Freeman, Cass County Surveyor
Date 9/9/20 MN License No. 21367



Index No. T.0-21.0

Statement of Evidence

East Quarter corner of Section 26, Township 142 North, Range 28 West, 5th Principal Meridian.

- Feb. 1874 P.H. Conger, General Land Office (GLO) Deputy Surveyor, in the notes of the subdivision of Township 142 North, Range 28 West, set a post for the original corner and referenced it as follows:
6" Poplar S 32° W 30 links (19.80 feet) 7" Poplar N 20° E 41 links (27.06 feet)
The above records are on file with the Minnesota Historical Society, St. Paul, Minnesota, copies are filed with the Cass County Highway Department, Surveyor's Office (CCHD/SO).
- July 1917 E.B. Horst, LS 376, Deputy County Surveyor, Survey Record No. 371, Book B, page 602 and Curo Book 151, page 17, on file in the CCHD/SO, states "E. 8 ft. to center of road look for 1/4 cor. & B.T.s all gone, settlers never saw original ¼ Cor."
- Aug. 1919 E.G. Harrington, U.S. Cadastral Engineer, GLO, Dependent Resurvey of the North Boundary and Subdivisional Lines Township 142 North, Range 28 West, on file with the Minnesota Historical Society, St. Paul, Minnesota, copies are filed with the CCHD/SO, notes state at the midpoint "set an iron post, 3 ft. long, 1 in. diam., 26 ins. in the ground, for the ¼ sec. cor. with brass cap" and witnessed as follows:
4" Poplar S 50°45' E 22 links (14.52 feet) 4" Poplar S 77°45' W 56 links (36.96 feet)
- June 1932 S.S. Walker, Engineers Assistant, C.A.R. #4, Job #321, Ditch Shelf 3, Book 173, page 80, on file in the CHD/SO, indicates U.S.G.L.O.S. 1919 at corner and witnesses as follows:
6" Pop. NW 73.6 feet 6" Pop. SW 76.5 feet
Notes corner replaced Oct. 22, 1932.
- July 1997 C. Krause, technician, United States Department of Agriculture Forest Service(USFS), T 142N R 28 W, Book 1, page 35, on file in the USFS Cass Lake Office, states "Chained South along Co. Rd. 157 GLO distance 1359' to approx. ¼ - search with locator no iron could be found. BT's taken out by road construction falls in fill area and swamp to west side of road."
- May 2019 B. Hippen, technician and P. Swentkofske, CCHD equipment operator, records of the CCHD/SO, prior to reconstruction of County Road #157, excavated a 10 feet east-west by 12 feet north-south area based on the 1919 position. The dig was 5 feet deep, a rust ring which was vertical for 0.8 foot, was recovered, down 2.5 feet, the flanges from the 1919 monument were recovered down 3.3 feet, this position is 12 feet, more or less, west of centerline of County Road Number 157 and witnessed as follows:
8" Red Oak N 43° E 123.65 feet Power Pole S 75° E 62.98 feet
12" Burr Oak S 45° W 91.56 feet
- Sept. 2020 B. Hippen, technician, records of the CCHD/SO, set an aluminum Cass County monument at the 1919 position, as determined by the recovered rust ring and flanges, down 0.5 foot and placed the recovered flanges at base of new monument, 2019 witnesses all good.

The monument, recovered and established references for the position are shown on the face of this document.

Analysis of the recovered record data, field evidence and survey measurements, indicates that the position recovered by the CCHD/SO in 2019 is the accepted location of this corner.

County Coordinates (Cass County North)
Northing 204266.40
Easting 508885.30