



A000663574

OFFICE OF THE COUNTY RECORDER
CASS COUNTY, MINNESOTA
CERTIFIED, FILED, AND/OR
RECORDED ON

9/10/2020 11:47:57 AM

AS DOC #: A000663574

PAGES: 2

REC FEES: 0.00

KATHRYN M. NORBY
CASS COUNTY RECORDER

BY NG Dep TX#: 164742

Page 1 of 2 A000663574

Twp 142 Rge 28 Index No. S.0-23.0

CERTIFICATE OF LOCATION OF GOVERNMENT CORNER

CN Sixteenth corner of Section 25, Township 142 N., Range 28 W., 5th P.M.

State of Minnesota, County of Cass

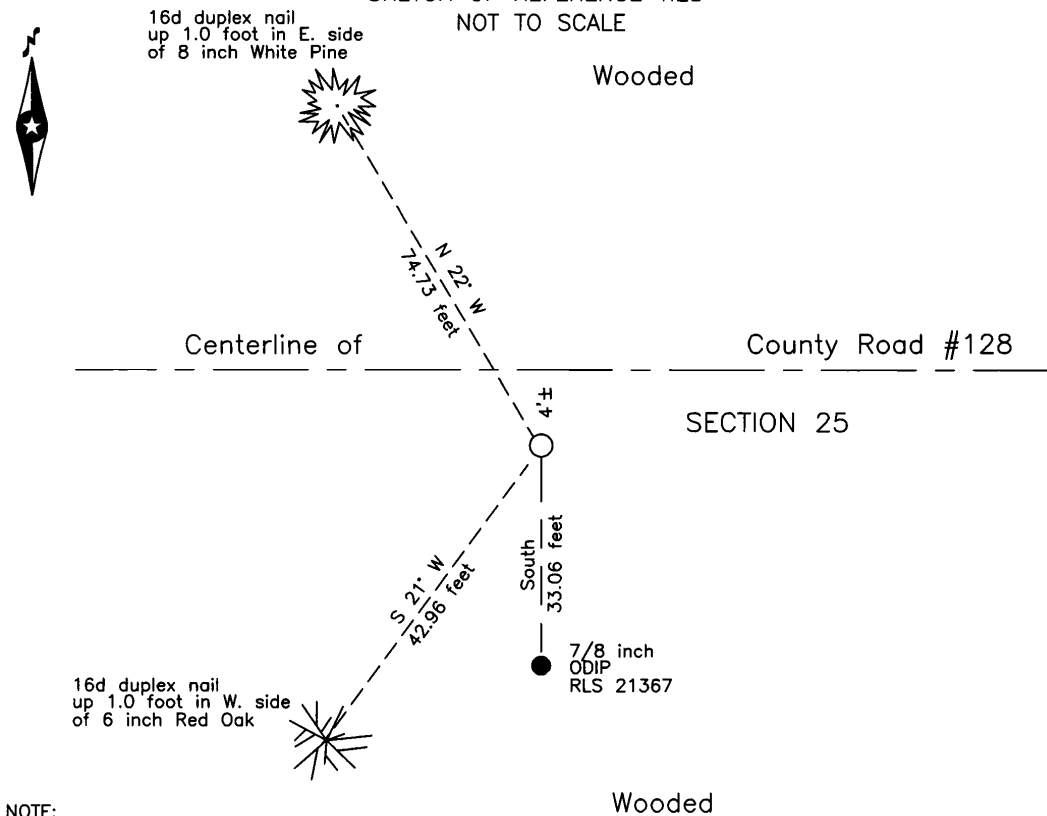
At the corner location shown on the sketch:

On _____ found _____

left monument as found lowered monument removed monument (explain)

On 4 Sept. 2020 placed a 1/2 inch rebar with plastic cap, RLS 21367,
down 0.5 foot, 4 feet± south of centerline of County Road #128.

SKETCH OF REFERENCE TIES NOT TO SCALE



NOTE:
All bearings are true

Statement of evidence relative to this corner location is on the back of this page.

I hereby certify that this survey, plan or report was prepared by me or under my direct supervision and that I am a duly Licensed Land Surveyor under the laws of the State of Minnesota.

Terry L. Freeman, Cass County Surveyor
Date 9/9/20 MN License No. 21367



Index No. S.0-23.0

Statement of Evidence

Center North Sixteenth corner of Section 25, Township 142 North, Range 28 West, 5th Principal Meridian.

- Aug. 1919 E.G. Harrington, U.S. Cadastral Engineer GLO, Dependent Resurvey of the North Boundary and Subdivisional Lines Township 142 North, Range 28 West, state "Set an iron post, 3 ft. long, 1 in. Diam., 26 ins in the ground, for the C.N. 1/16 sec. cor., with brass cap". The bearing trees are listed as follows:
6" Poplar S 73°15' E 52 links (34.32 feet) 12" Norway Pine S 25° W 70 links (46.20 feet)
The above records are on file with the Minnesota Historical Society, St. Paul, Minnesota, copies are filed with the Cass County Highway Department, Surveyor's Office (CCHD/SO).
- Aug. 1919 E.B. Horst, LS 376, Deputy County Surveyor, Survey Record No. 435, Book C, page 344 and Ditch Shelf 5, Book 34, pages 9 and 32, on file in the CCHD/SO, states "At Sta. 58008.0 fall 4.70 ft. N. of U.S. I.M. C.N. 1/16 Sec. 25. Set over cor. L. 0°47' East on N 1/16 line."
- Aug. 1966 R.F. Schneider, LS 5740, Certificate of Survey and notes for Harker, on file in the Northern Engineering & Consulting, Walker Office, copy on file in the CCHD/SO, indicates an iron pipe monument at the subject corner.
- Oct. 1982 G.H. Stevenson, LS 12684, Survey for Drennen, on file in the Northern Engineering & Consulting, Walker Office, copy on file in the CCHD/SO, indicates an iron pipe Mon. in place at the subject corner.
- Sept. 1985 C.R. Krause, technician, United States Department of Agriculture Forest Service(USFS), T 142N R 28 W, Book 1, page 46, on file in the USFS Cass Lake Office, states Measured with distance wheel from NW 1/16 1362.2 feet East along centerline of County Road. Found FSLP on 5 inch Balsam stub 6 feet high, 39 feet south of road. Road has been cut from 4 feet to 8 feet deep and iron was probably taken out by construction years ago. Found rotted and burned out stump hole on top of bank that may have been GLO Pine, no stump remains above ground.
- July 1995 T.L. Freeman, LS 21367, Revised the 1966 Schneider Certificate of Survey for Harker, on file in the Northern Engineering & Consulting, Walker Office, copy on file in the CCHD/SO, which indicates an iron pipe monument at the subject corner.
- Sept. 2000 T.L. Freeman, LS 21367, Certificate of Survey for Kube, on file in the Northern Engineering & Consulting, Walker Office, copy on file in the CCHD/SO, indicates a GLO brass cap monument found at the subject corner.
- June 2018 B. Hippen, technician, records of the CCHD/SO, prior to reconstruction of County Road #128, found a 20d spike down 0.5 foot, 4 feet, more or less, south of centerline of County Road #128, in the search area of this corner.
- Sept. 2020 B. Hippen, technician, records of the CCHD/SO, Set a 1/2 inch rebar with plastic cap marked RLS 21367, at the position determined from recovered 1966 survey monuments, down 0.5 foot, 4 feet, more or less, south of new centerline of County Road #128 and witnessed as follows:
8" White Pine N 22° W 74.73 feet 7/8" Iron Pipe South 33.06 feet
9" Red Oak S 21° W 42.96 feet

The monument, recovered and established references for the position are shown on the face of this document.

Analysis of the recovered record data, field evidence and survey measurements, indicates that the monument set by the CCHD/SO in 2020 is the accepted location of this corner.

County Coordinates (Cass County North)

Northing 205743.50

Easting 511570.06