



A000660530

OFFICE OF THE COUNTY RECORDER
CASS COUNTY, MINNESOTA
CERTIFIED, FILED, AND/OR
RECORDED ON

6/19/2020 10:28:29 AM

AS DOC #: A000660530

PAGES: 2

REC FEES: 0.00

KATHRYN M. NORBY
CASS COUNTY RECORDER

BY SF Dep TX#: 162433

Index No. R.0-17.0

CERTIFICATE OF LOCATION OF GOVERNMENT CORNER

NORTHEAST Corner of Section 27, Township 140, Range 31, 5TH P.M.

STATE OF MINNESOTA, County of CASS

At the location shown on the sketch:

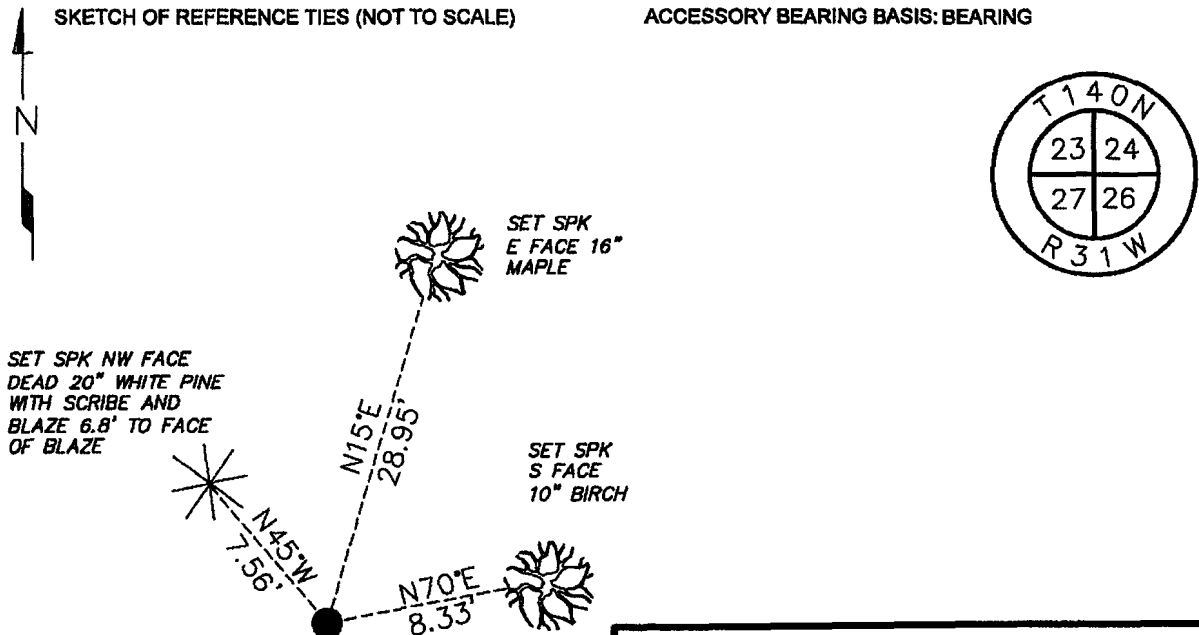
On 3/31/2020 found 2 INCH PIPE WITH CAP

left monument as found, lowered monument, removed monument (explain)

On _____ placed an _____

SKETCH OF REFERENCE TIES (NOT TO SCALE)

ACCESSORY BEARING BASIS: BEARING



I hereby certify that this document was prepared by me or under my direct supervision and that I am a duly Licensed Land Surveyor under the laws of the State of Minnesota

Paul Herkenhoff
PAUL HERKENHOFF

Date 4/10/2020 License No. 45875

N= 143170.009 E= 410291.260
DATUM= CASS COUNTY NORTH
NAD 83/96 ADJ. US SURVEY FT.

Statement of evidence relative to this corner is on back of page.





Index No. R.0-17.0

Statement of Evidence:

Northeast Corner of Section 27, Township 140, Range 31 West, 5th Principle Meridian, Cass County, Minnesota

1870 T.B. Walker, General Land Office (GLO) Deputy Surveyer set a post for the original corner in the subdivision and noted the following accessories.

15" Norway Pine	S40E	15 links
16" Norway Pine	N49W	10 links
10" Norway Pine	N52E	58 links

Record on file with the Minnesota Historical Society in St. Paul, MN and copies filed with the Cass County County Highway Department, Surveyors Office (CCHD/SO).

1974 Walt Curo, RLS 11395 noted setting a spike from a scribed pine tree. Record filed in Curo Book 308, page 31, which is filed with the Cass County County Highway Department, Surveyors Office (CCHD/SO).

2003 Landecker and Associates established a lost position for this corner using a double proportion method.

2020 Lakes Area Surveying searched the area for all previous evidence, finding a 2 inch pipe with a cap in place. The monument found is the same type of monument found at the north quarter corner of Section 26. The found monument fit GLO bearing and distance to a scribed pine tree.

Analysis of the recovered record data, field evidence and survey measurements, indicates that the monument found by Lakes Area Surveying in 2020 is the accepted location of this corner.