

Page 1 of 2
A000659647



A000659647
OFFICE OF THE COUNTY RECORDER
CASS COUNTY, MINNESOTA
CERTIFIED, FILED, AND/OR
RECORDED ON

5/21/2020 10:26:43 AM
AS DOC #: A000659647
PAGES: 2
REC FEES: 0.00

KATHRYN M. NORBY
CASS COUNTY RECORDER
BY SF _____ Dep TX#: 161724

Twp 136 Rge 31 Index No. X.0-21.0

CERTIFICATE OF LOCATION OF GOVERNMENT CORNER

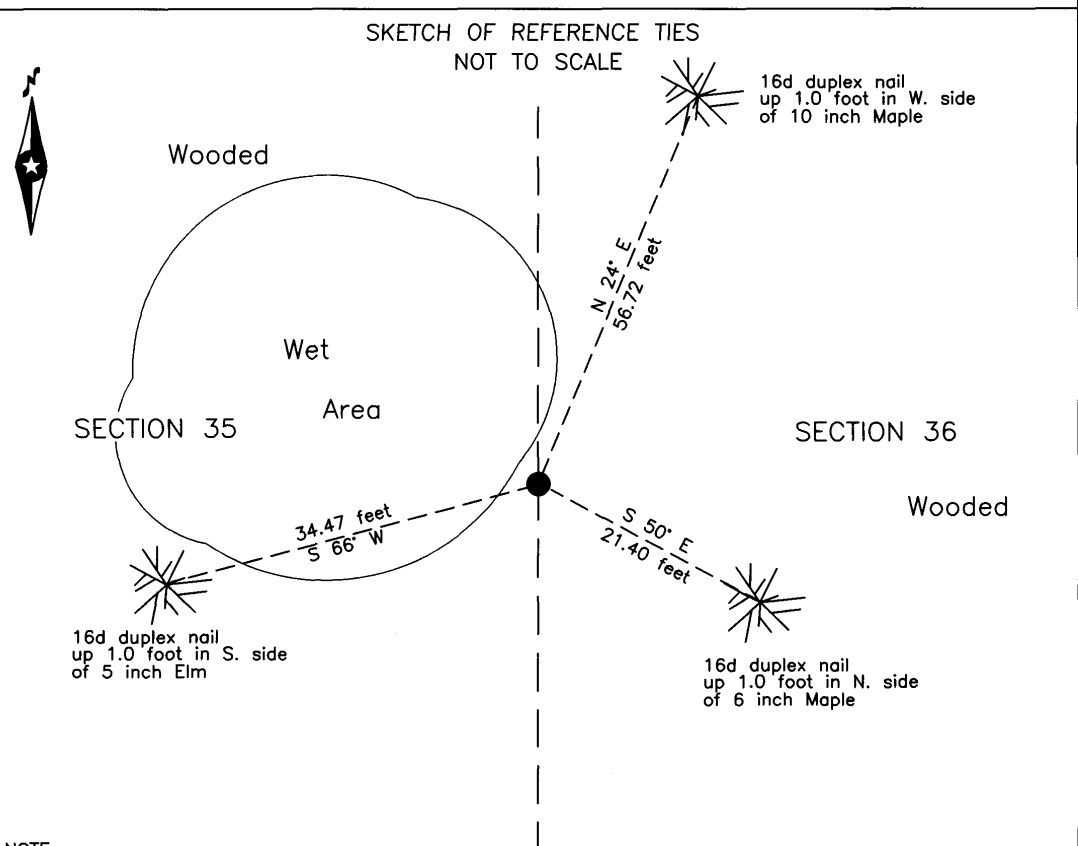
East Quarter corner of Section 35, Township 136 N., Range 31 W., 5th P.M.
State of Minnesota, County of Cass

At the corner location shown on the sketch:

On 8 May 2020 found a 2.25 inch outside diameter iron pipe, in concrete,
up 1.5 feet, top 1 foot is bent, at edge of small wet area.

left monument as found lowered monument removed monument (explain)


On _____ placed _____



NOTE:
All bearings are true

Statement of evidence relative to this corner location is on the back of this page.

I hereby certify that this survey, plan or report was prepared by me or under my direct supervision and that I am a duly Licensed Land Surveyor under the laws of the State of Minnesota.


Terry L. Freeman, Cass County Surveyor
Date 5/20/2020 MN License No. 21367

Index No. X.0-21.0Statement of Evidence**East Quarter corner of Section 35, Township 136 North, Range 31 West, 5th Principal Meridian.**

- Sept. R. Cronk, General Land Office (GLO) Deputy Surveyor in the notes of the subdivision of Township 136 North, 1870 Range 31 West, set a post for the original corner and referenced it as follows:
24" White Pine N 68° E 26 links (17.16 feet) 8" Aspen S 35° W 24 links (15.84 feet)
Said records are on file with the Minnesota Historical Society, St. Paul, Minnesota, copies are filed with the Cass County Highway Department, Surveyor's Office (CCHD/SO).
- June A.W. Moulster, LS 967, Deputy County Surveyor, Survey Record #191, Book A, page 457 and Curo Book Misc 1910 005, page 31, on file in the CCHD/SO, states "at 2632 the ¼ cor between sections 35 and 36 sets east 19.75 feet, I found rotted Aspen stump, chopped in and found B.T. Large W.P. stump burned and tipped over but no marks to be found as it was burned to much. I set the ¼ corner from S.W. to B.T."(sic)
- Oct. A.W. Moulster, LS 967, Deputy County Surveyor, Survey Record #191, Book A, page 463 and Curo Book 50-1, 1911 page 127, on file in the CCHD/SO, states "We take up the wood stakes and put in their place a 2 x 48 inch galvanized iron pipe capped on top with rod trough bottom, set in a bed of concrete for the true corner."
- Circa J.W. Curo, LS 1428, Township 136 North, Range 31 West Map, compiled from record information, on file in the 1930 CCHD/SO, Indicates monument at this corner and 1910 distances between section corners.
- May B. Hippen, technician, records of the CCHD/SO, found 2.25 inch outside diameter iron pipe, in concrete, top 1 foot 2020 is bent, at edge of small wet area and witnessed as follows:
10" Maple N 24° E 56.72 feet 6" Maple S 50° E 21.40 feet
5" Elm S 66° W 34.47 feet

The monument, recovered and established references for the position are shown on the face of this document.

Analysis of the recovered record data, field evidence and survey measurements, indicates that the monument recovered by the CCHD/SO in 2020 is the correct perpetuation of this corner.

County Coordinates (Cass County South)**Northing 243851.68****Easting 481430.88**