

Page 1 of 2  
A000657762

I hereby certify that this survey, plan, or report was prepared by me or under my direct supervision, and that I am a duly Licensed Land Surveyor under the laws of the State of Minnesota. I further certify that this certificate of location of government corner is correct and complete to the best of my knowledge and belief.

Signature: James Kramer  
James Kramer  
Date: 1-27-2020  
Reg. No. 23668

**A000657762**  
**OFFICE OF THE COUNTY RECORDER**  
**CASS COUNTY, MINNESOTA**  
**CERTIFIED, FILED, AND/OR**  
**RECORDED ON**  
2/27/2020 10:32:10 AM  
AS DOC #: A000657762  
PAGES: 2  
REC FEES: 0.00  
**KATHRYN M. NORBY**  
**CASS COUNTY RECORDER**  
BY NG Dep TX#: 160100

**SKETCH OF REFERENCE TIES**  
(not to scale - bearings are magnetic)  
Ties are measured to center of monument unless otherwise noted  
UNITS =  Metric  English

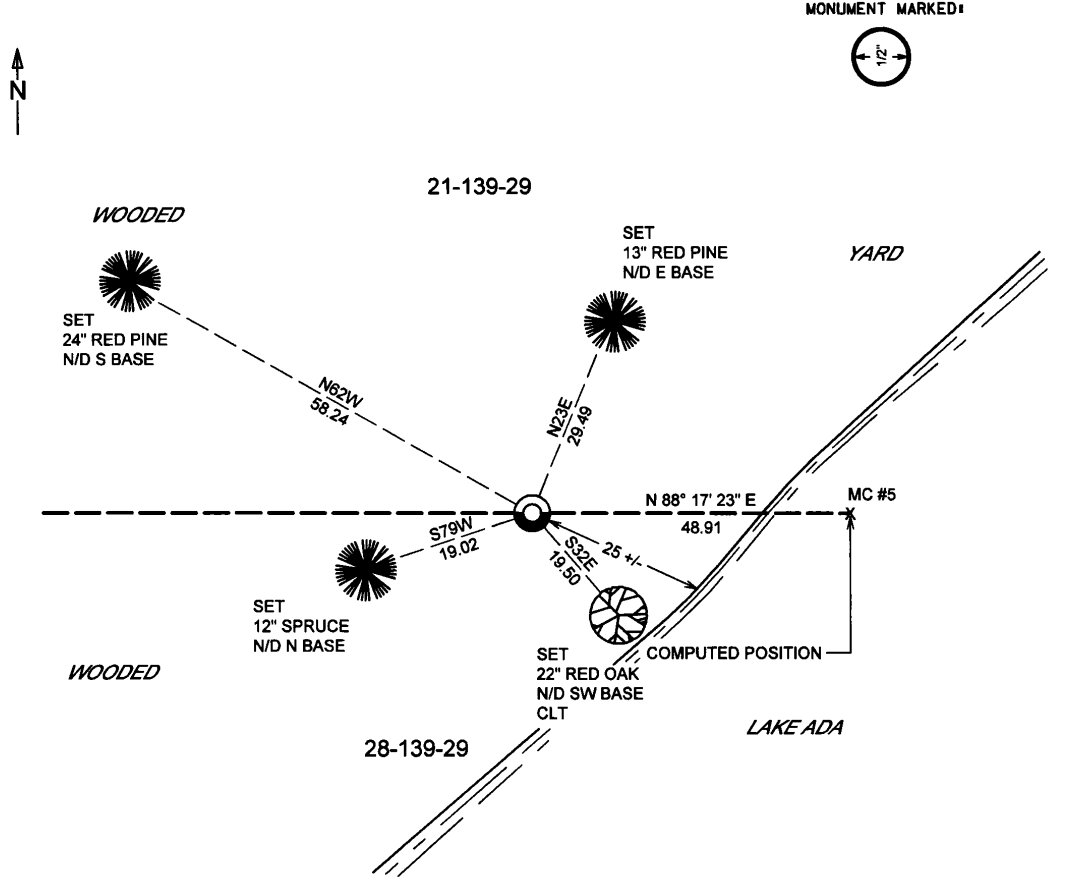
NAD 1983/1996 CASS COUNTY NORTH ZONE COORDINATES  
Witness Corner N= 111340.277 E= 463964.915  
Meander Corner N= 111338.817 E= 464013.808

**CERTIFICATE OF LOCATION OF GOVERNMENT CORNER**  
WITNESS TO

INDEX NO. R.0-9.5, MC #5 ON SOUTH LINE OF SECTION 21, TOWNSHIP 139, RANGE 29,  
STATE OF MINNESOTA, COUNTY OF CASS.

AT THE CORNER LOCATION SHOWN ON THE SKETCH:  
 ON 08-21-2019 FOUND A(N) 1/2" Iron pipe, up 0.2  
DATE  
 LEFT MONUMENT AS FOUND,  LOWERED MONUMENT,  REMOVED MONUMENT (EXPLAIN)  
 ON \_\_\_\_\_ DATE \_\_\_\_\_ PLACED A(N) \_\_\_\_\_

**SKETCH OF REFERENCE TIES**



Coordinates derived by RTK GPS (survey grade)

BL = Blazed  
SC = Scribed  
PR = Painted Red  
CLT = Corner Location Tag

**KLD**  
1120 Industrial Park Road SW  
Grand Rapids, MN 55741  
218-829-5333  
**KRAMER LEAS DELEO**  
SURVEYING • ENGINEERING • PLANNING  
BRainerd ST. CLOUD

**STATEMENT OF EVIDENCE:**

WITNESS CORNER TO MEANDER CORNER NO 5  
ON THE SOUTH LINE OF SECTION 21, TOWNSHIP  
139 NORTH, RANGE 29 WEST OF THE 5TH  
PRINCIPAL MERIDIAN CASS COUNTY,  
MINNESOTA

**1865** Wright and Walker ran the original survey subdivision for Township 139 North Range 29 West. A post was set to mark the corner and the following bearing ties were set. Information on file in the Minnesota Historical Society, St. Paul MN. Copies on file in Cass County Highway Department/Surveyors Office (CCHD/SO).

<u>Tie</u>	<u>Bearing</u>	<u>Distance</u>
8" Black Pine	N 20 ½ E	27 links (17.82')
10" Yellow Pine	S 84 ½ W	22 links (14.52')

**1951** John E. Howard completed the Plat of Leashers Lake Ada Park. The plat indicates the corner location. Information on file in CCHD/SO.

**2019** Crews at Kramer Leas Deleo recovered a ½" Iron pipe. The recovered Iron Pipe is accepted as a Witness Corner to Meander Corner Number 5 on the South Line of Section 21. The following bearing ties were also set.

<u>Tie</u>	<u>Bearing</u>	<u>Distance</u>
24" Red Pine	N62W	58.24'
13" Red Pine	N23E	29.49'
22" Red Oak	S32E	19.50'
12" Spruce	S79W	19.02'

For additional information contact:  
**Kramer Leas Deleo PC**  
1120 Industrial Park Road Southwest  
Brainerd, MN. 56401  
218-829-5333