

I hereby certify that this survey, plan, or report was prepared by me or under my direct supervision, and that I am a duly Licensed Land Surveyor under the laws of the State of Minnesota. I further certify that this certificate of location of government corner is correct and complete to the best of my knowledge and belief.

Signature: James Kramer
James Kramer

Date: 1-27-2020
Reg. No. 23668



A000657761

OFFICE OF THE COUNTY RECORDER
CASS COUNTY, MINNESOTA
CERTIFIED, FILED, AND/OR
RECORDED ON

2/27/2020 10:32:09 AM

AS DOC #: A000657761

PAGES: 2

REC FEES: 0.00

KATHRYN M. NORBY
CASS COUNTY RECORDER
BY NG Dep TX#: 160100

SKETCH OF REFERENCE TIES

(not to scale - bearings are magnetic)
Ties are measured to center of monument unless otherwise noted

UNITS = Metric English

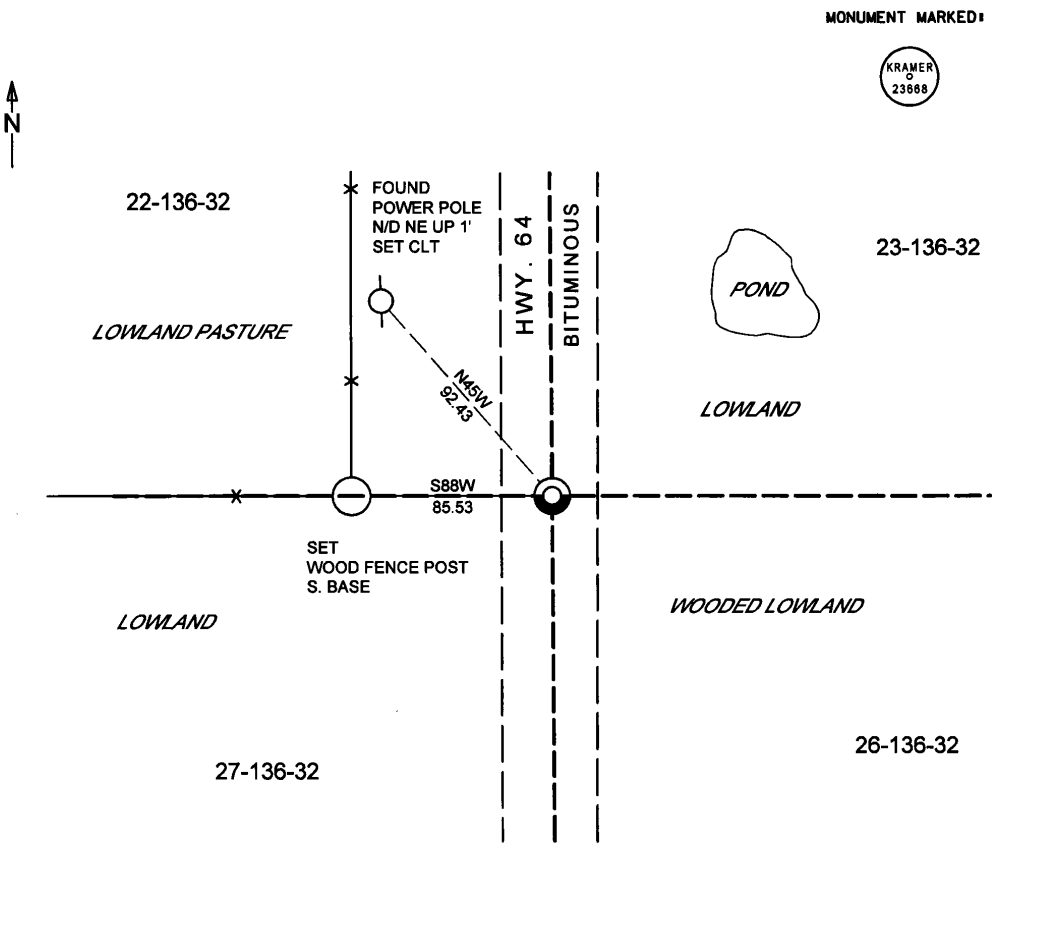
NAD 1983/1996 CASS SOUTH COUNTY COORDINATES
N= 251719.125 E= 442059.908

CERTIFICATE OF LOCATION OF GOVERNMENT CORNER

INDEX NO. R.0-17.0, Northeast CORNER OF SECTION 27, TOWNSHIP 136, RANGE 32,
STATE OF MINNESOTA, COUNTY OF CASS

AT THE CORNER LOCATION SHOWN ON THE SKETCH:

- ON 03-30-2017 FOUND A(N) NOTHING
- LEFT MONUMENT AS FOUND, LOWERED MONUMENT, REMOVED MONUMENT (EXPLAIN)
- ON 03-30-2017 PLACED A(N) 1/2"x14" iron pipe with RLS cap stamped "KRAMER 23668" FLUSH



Coordinates derived by RTK GPS (survey grade)

KLD
1100 Industrial Park Road SW
Shoreview, MN 55451
218-859-5533

KRAMER LEAS DELEO
SURVEYING • ENGINEERING • PLANNING
BRainerd • ST. CLOUD



Index No. R.0-17.0

Statement of Evidence

*Northeast Corner of Section 27, Township 136 North, Range 32 West,
Cass County, Minnesota*

1866 The Original Survey was conducted US Deputy Surveyor Oscar E. Garrison of the United States Government Land Office. He set a post to establish the corner location and recorded four bearing trees as follows. Information on file in the Minnesota Historical Society, St. Paul MN. Copies on file in Cass County Highway Department/Surveyors Office (CCHD/SO).

<u>Tie</u>	<u>Bearing</u>	<u>Distance</u>
18" Tamarack	N26E	10 links (6.60 feet)
16" Tamarack	S11W	23 links (15.18 feet)
5" Spruce	S46E	14 links (9.24 feet)
4" Spruce	N52W	36 links (23.76 feet)

Unk The Minnesota Department of Transportation right-of-way map for Trunk Highway 64 indicates the corner location being at the intersection of a North-South road, with a fence line bearing west. Said point being located at POT station 938+15.6.

2000 CCSO found a ¼" pin down 0.7' on centerline of HWY 64. The following bearing ties were noted. Information on file in CCHD/SO.

<u>Tie</u>	<u>Bearing</u>	<u>Distance</u>
9" Ash	S68E	84.34 feet
Power Pole	N34W	92.77 feet
½" Rebar	S38W	38.40 feet
RW Monument	S85E	74.48 feet

2017 Survey crews from Kramer Leas DeLeo P.C. searched the area for original corner evidence, and found nothing. It is assumed the pin recovered in 2000 was destroyed during road construction. The corner location was computed using MN Department of Transportation alignment, at station 938+15.6. This corner location fits a 2000 bearing tie within 0.34, the computed location of the corner location is considered the best available evidence of the perpetuation of the corner location. Crews placed a ½" X 14" iron pipe with plastic cap stamped "KRAMER 23668" to mark the corner. The following bearing tie was recovered.

<u>Tie</u>	<u>Bearing</u>	<u>Distance</u>
Power Pole (2000)	N45W	92.43 feet

The following bearing tie was set.

<u>Tie</u>	<u>Bearing</u>	<u>Distance</u>
Fence Post	S88W	85.53 feet