

Page 1 of 2
A000657760

I hereby certify that this survey, plan, or report was prepared by me or under my direct supervision, and that I am a duly Licensed Land Surveyor under the laws of the State of Minnesota. I further certify that this certificate of location of government corner is correct and complete to the best of my knowledge and belief.

Signature: James Kramer
James Kramer

Date: 1-27-2020
Reg. No. 23668



A000657760

**OFFICE OF THE COUNTY RECORDER
CASS COUNTY, MINNESOTA
CERTIFIED, FILED, AND/OR
RECORDED ON**

2/27/2020 10:32:08 AM

AS DOC #: A000657760

PAGES: 2

REC FEES: 0.00

**KATHRYN M. NORBY
CASS COUNTY RECORDER**

BY NG Dep TX#: 160100

SKETCH OF REFERENCE TIES

(not to scale - bearings are magnetic)
Ties are measured to center of monument unless otherwise noted

UNITS = Metric English

NAD 1983/1996 CASS SOUTH COUNTY COORDINATES

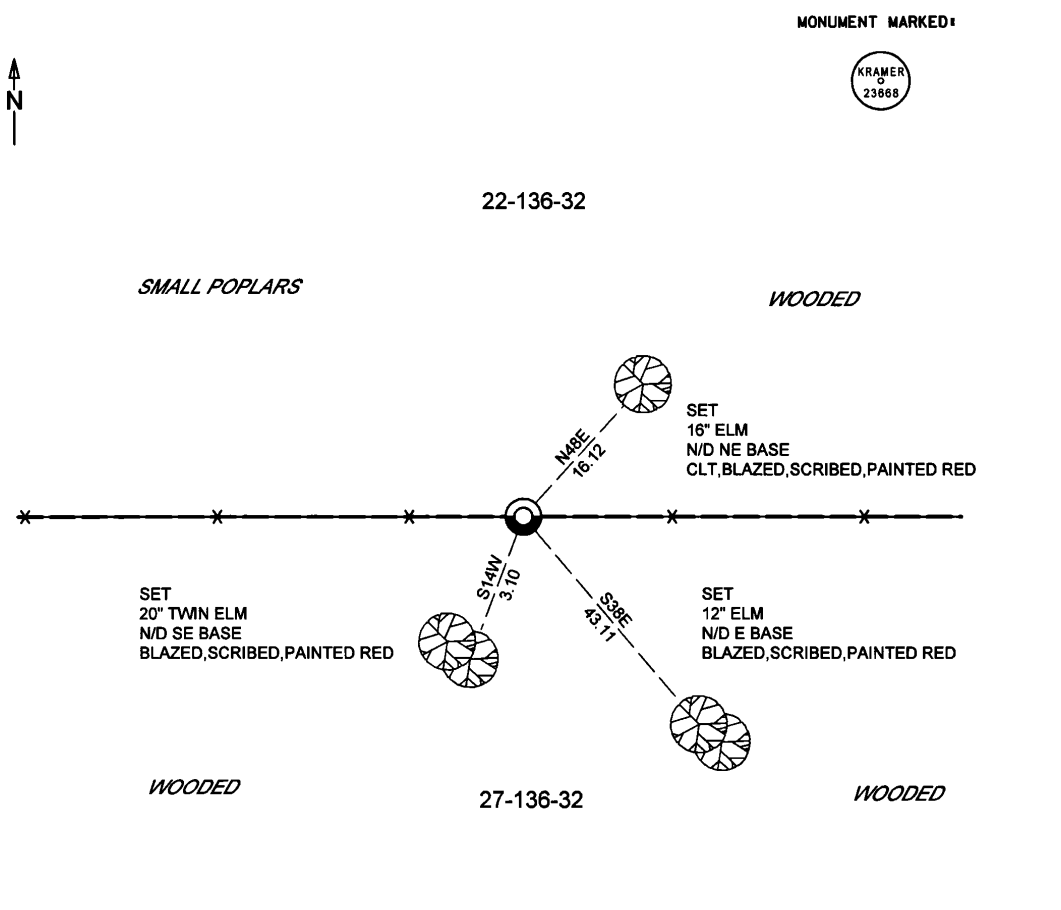
N= 251719.232 E= 439410.550

CERTIFICATE OF LOCATION OF GOVERNMENT CORNER

INDEX NO. R.0-15.0, North Quarter CORNER OF SECTION 27, TOWNSHIP 136, RANGE 32,
STATE OF MINNESOTA, COUNTY OF CASS

AT THE CORNER LOCATION SHOWN ON THE SKETCH:

- ON 03-30-2017 FOUND A(N) NOTHING
- LEFT MONUMENT AS FOUND, LOWERED MONUMENT, REMOVED MONUMENT (EXPLAIN)
- ON 03-30-2017 PLACED A(N) 1/2"x30" iron pipe with RLS cap stamped "KRAMER 23668" UP 0.4'



Coordinates derived by RTK GPS (survey grade)

KLD
1120 Industrial Park Road SW
Brainerd, MN 56401
218-829-5333

KRAMER LEAS DELEO
SURVEYING • ENGINEERING • PLANNING
BRainerd • ST. CLOUD



Index No. R.0-15.0

Statement of Evidence

*North Quarter Corner of Section 27, Township 136 North, Range 32 West,
Cass County, Minnesota*

1866 The Original Survey was conducted US Deputy Surveyor Oscar E. Garrison of the United States Government Land Office. He set a post to establish the corner location and recorded two bearing trees as follows. Information on file in the Minnesota Historical Society, St. Paul MN. Copies on file in Cass County Highway Department/Surveyors Office (CCHD/SO).

<u>Tie</u>	<u>Bearing</u>	<u>Distance</u>
12" White Oak	N21W	68 links (44.88 feet)
12" Aspen	S83E	89 links (58.74 feet)

2017 Survey crews from Kramer Leas DeLeo; P.C. searched the area for original corner evidence and found nothing. A fence line bearing East-West exists in the area of the corner. The corner location is considered obliterated, evidenced by the existing East-West bearing fence. The corner location was computed equal distant between the Northeast and Northwest corners of Section 27, on the East-West bearing fence line. This location is considered the best available evidence of the original corner location, being 3.9 feet south of a lost corner location. Crews placed a 1/2" x 14" iron pipe with plastic cap stamped "KRAMER 23668" to mark the corner. The following bearing ties were set.

<u>Tie</u>	<u>Bearing</u>	<u>Distance</u>
20" Twin Elm	S14W	3.10 feet
16" Elm	N48E	16.12 feet
12" Elm	S38E	43.11 feet