

Page 1 of 2 A000657758

I hereby certify that this survey, plan, or report was prepared by me or under my direct supervision, and that I am a duly Licensed Land Surveyor under the laws of the State of Minnesota. I further certify that this certificate of location of government corner is correct and complete to the best of my knowledge and belief.

Signature: James Kramer
James Kramer

Date: 1-27-2020

Reg. No. 23668



A000657758

**OFFICE OF THE COUNTY RECORDER
CASS COUNTY, MINNESOTA
CERTIFIED, FILED, AND/OR
RECORDED ON**

2/27/2020 10:32:06 AM

AS DOC #: A000657758

PAGES: 2

REC FEES: 0.00

**KATHRYN M. NORBY
CASS COUNTY RECORDER**

BY NG Dep TX#: 160100

SKETCH OF REFERENCE TIES

(not to scale - bearings are magnetic)
Ties are measured to center of monument unless otherwise noted

UNITS = Metric English

NAD 1983/1996 CASS COUNTY COORDINATES
N= 243919.354 E= 508115.653

CERTIFICATE OF LOCATION OF GOVERNMENT CORNER

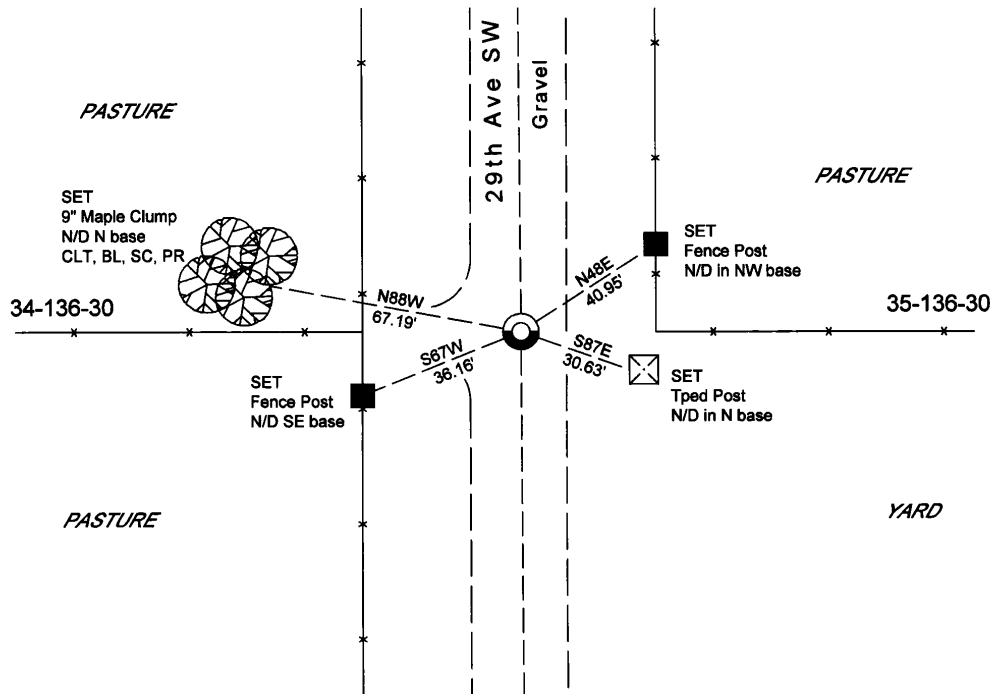
INDEX NO. X.0-17.0, East Quarter CORNER OF SECTION 34, TOWNSHIP 136, RANGE 30,
STATE OF MINNESOTA, COUNTY OF CASS

AT THE CORNER LOCATION SHOWN ON THE SKETCH:

- ON 04-23-2019 FOUND A(N) 3/8" Rebar down 0.6 feet
- DATE
- LEFT MONUMENT AS FOUND, LOWERED MONUMENT, REMOVED MONUMENT (EXPLAIN)
- ON _____ PLACED A(N) _____
- DATE

SKETCH OF REFERENCE TIES

MONUMENT MARKED:



Coordinates derived by RTK GPS (survey grade)

BL = Blazed
SC = Scribbled
PR = Painted Red
CLT = Corner Location Tag

KRAMER LEAS DELEO
SURVEYING • ENGINEERING • PLANNING
BRainerd ST. CLOUD

1120 Industrial Park Road SW
Brainerd, MN 56401
218-829-0332

STATEMENT OF EVIDENCE:

EAST QUARTER CORNER OF SECTION 34,
TOWNSHIP 136 NORTH, RANGE 30 WEST OF THE
5TH PRINCIPAL MERIDIAN CASS COUNTY,
MINNESOTA

1870 The original Public Land Survey was conducted by Richard Cronk. He set a wood post was set to mark the corner. The following bearing ties were set. Information on file in the Minnesota Historical Society, St. Paul MN. Copies on file in Cass County Highway Department/Surveyors Office (CCHD/SO).

<u>Tie</u>	<u>Bearing</u>	<u>Distance</u>
14" Aspen	S41E	55 links (36.30 feet)
5" Aspen	N71W	50 links (33.00 feet)

1910 Township road order shows no survey. Information on file in CCHD/SO.

1914 John Curo set a 4" X 4" X 48" oak stake proportionally to mark the corner (County Survey Record Book B pages 46-48). Information on file in CCHD/SO.

2019 Crews at Kramer Leas Deleo recovered a 3/8" rebar making the corner. The rebar hits N-S road centerline and fence lines bearing east and west. The corner fits the lost position within 3' +/-, and is accepted as the best evidence to mark the corner. The following bearing accessories were set.

<u>Tie</u>	<u>Bearing</u>	<u>Distance</u>
T-Ped Post	S87E	30.63 feet
Fence Post	N48E	40.95 feet
Fence Post	S67W	36.13 feet
9" Maple Clump	N88W	67.19 feet

For additional information contact:
Kramer Leas Deleo PC
1120 Industrial Park Road Southwest
Brainerd, MN. 56401
218-829-5333