



A000656375  
 OFFICE OF THE COUNTY RECORDER  
 CASS COUNTY, MINNESOTA  
 CERTIFIED, FILED, AND/OR  
 RECORDED ON  
 12/23/2019 11:52:47 AM  
 AS DOC #: A000656375  
 PAGES: 2  
 REC FEES: 0.00  
 KATHRYN M. NORBY  
 CASS COUNTY RECORDER  
 BY NG Dep TX#: 158821

### CERTIFICATE OF LOCATION OF GOVERNMENT CORNER

I hereby certify that this survey, plan, or report was prepared by me or under my direct supervision and that I am a duly Licensed Land Surveyor under the laws of the State of Minnesota.

*Patrick A. Trottier*

Patrick A. Trottier

Date: 12-11-2019 License No: 41002  
 PLS# 41002

North Quarter Corner of Section 9, Township 135 N, Range 31 W, 5<sup>th</sup> P.M.

On \_\_\_\_\_ found a \_\_\_\_\_

left monument as found,  lowered monument,  removed monument (explain)

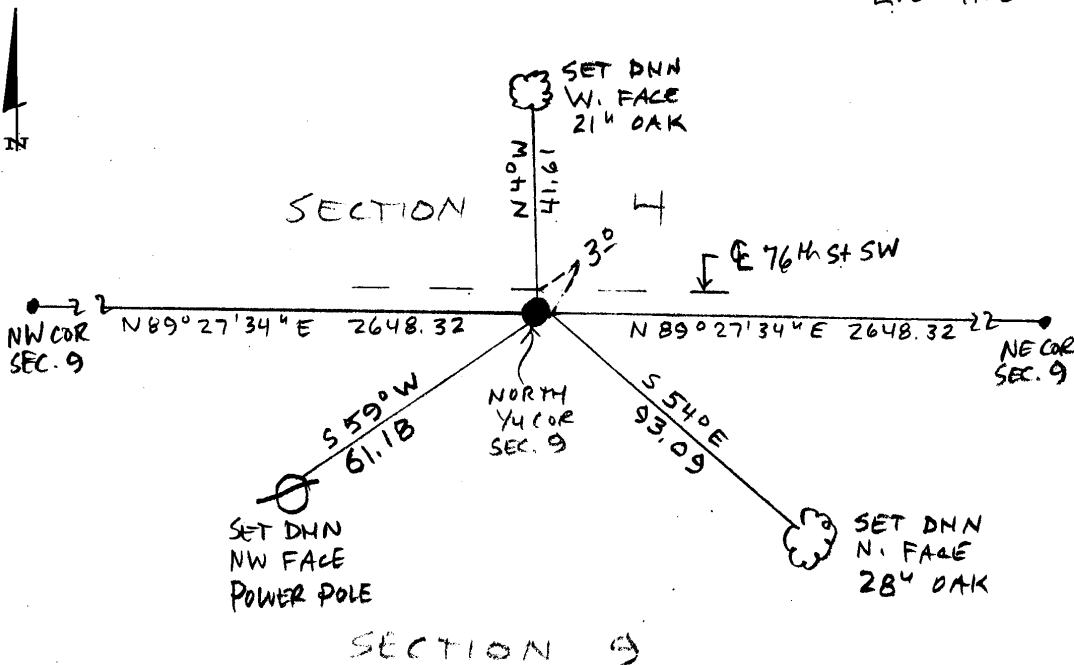
On 11-26-2019 placed a 1/2" x 1 1/8" iron pipe with plastic cap stamped "RLS 41002", down 0<sup>3</sup> and 3' south of E 76<sup>th</sup> St SW

### SKETCH OF REFERENCE TIES

Not to Scale

Corner Index:

E.O-11.0





**E.0-11.0**

**Statement of Evidence**

**North Quarter corner, Section 9, Township 135 North, Range 31  
West, 5<sup>th</sup> Principal Meridian, Cass County, Minnesota**

1870 – R. Cronk, General Land Office (GLO) Surveyor originally established this corner position while surveying the interior subdivision lines of Township 135 North, Range 31 West. A wood post was set to mark the corner position with the following witnesses:

7" Aspen      N 48° W      23 links  
7" Aspen      S 23° E      27 links

Information on file in the MN Historical Society, St. Paul, MN. Copies on file in the Cass County Highway Department/Surveyors Office (CCHD/SO).

2019 – Patrick A. Trottier, RLS 41002 finds no evidence of corner and determines position by single proportion method between established NE and NW corners of Section 9. Sets 1/2" x 18" iron pipe with plastic cap stamped "RLS 41002" as the perpetuation of the corner and establishes the witnesses as shown on the face of this drawing.

County Coordinates (Cass County South NAD83/96)

Northing      235967.32  
Easting        468253.73