



A000656373

OFFICE OF THE COUNTY RECORDER  
 CASS COUNTY, MINNESOTA  
 CERTIFIED, FILED, AND/OR  
 RECORDED ON

12/23/2019 11:52:45 AM

AS DOC #: A000656373

PAGES: 2

REC FEES: 0.00

KATHRYN M. NORBY  
 CASS COUNTY RECORDER

BY NG Dep TX#: 158821

### CERTIFICATE OF LOCATION OF GOVERNMENT CORNER

I hereby certify that this survey, plan, or report was prepared by me or under my direct supervision and that I am a duly Licensed Land Surveyor under the laws of the State of Minnesota.

*Patrick A. Trottier*

Patrick A. Trottier

Date: 12-13-2019 License No: 41002  
 PLS# 41002

Northeast Corner of Section 6, Township 135N, Range 31W, 5<sup>th</sup> P.M.

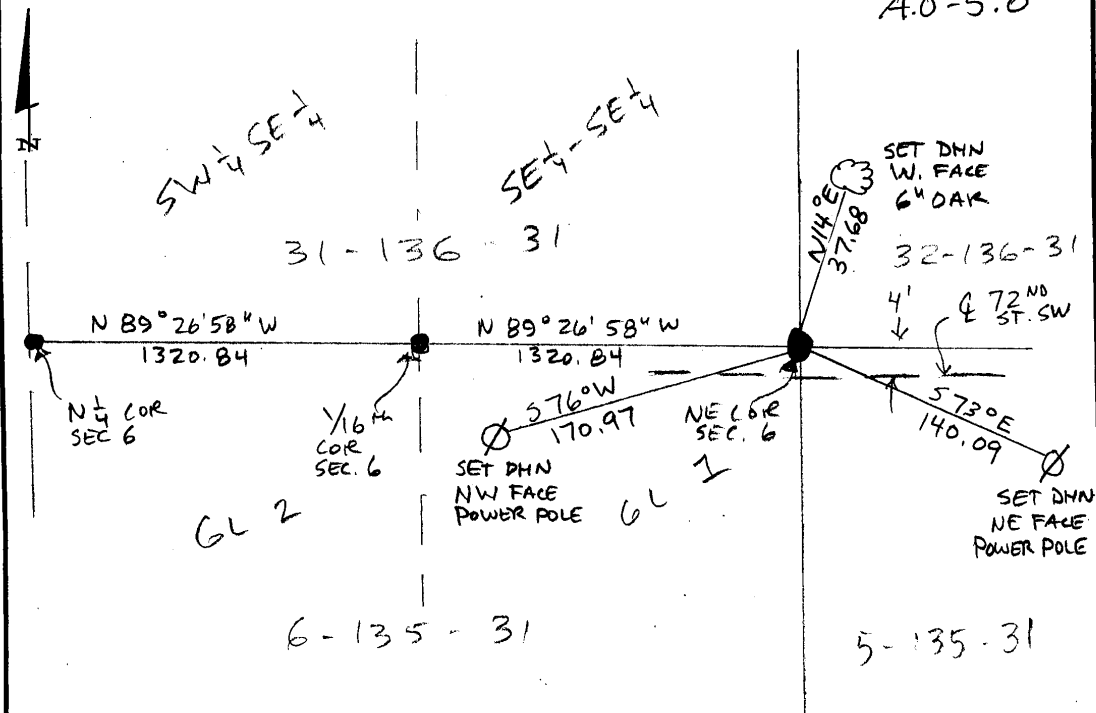
On \_\_\_\_\_ found a \_\_\_\_\_  
 left monument as found,  lowered monument,  removed monument (explain)  
 On 11-27-2019 placed a 1/2" x 18" iron pipe with plastic cap stamped "RLS 41002", down 0<sup>3</sup>, 4 feet N. of  $\odot$  of

### SKETCH OF REFERENCE TIES

Not to Scale

Corner Index:

A.0-5.0





**A.0-5.0**

**Statement of Evidence**

**Northeast corner, Section 6, Township 135 North, Range 31  
West, 5<sup>th</sup> Principal Meridian, Cass County, Minnesota**

1858 – E. N. Darling, General Land Office (GLO) Surveyor originally established this corner position while surveying the north line of Township 135 North, Range 31 West. A wood post was set to mark the corner position with the following witnesses:

8" W. Birch	S 15° E	9 links
9" W. Birch	N 65° W	25 links
8" Fir	N 63° E	20 links
8" Fir	S 45° W	28 links

Information on file in the MN Historical Society, St. Paul, MN. Copies on file in the Cass County Highway Department/Surveyors Office (CCHD/SO).

1916 - John Curo in County Book B, p. 247-257 and Curo Book 67, p. 146 set 3" square post and the following witnesses:

6" Poplar	N 60° W	40.70 feet
5" Poplar	N 4° E	26.35 feet

Information on file in the CCHD/SO.

1922 - Elmer Horst in County Book D, p. 179 and Curo Book 185, p. 11 and 13, found corner in center of road and the two 1916 ties with following measurements:

Poplar stump	North	26.2 feet
Poplar stump	N 66° W	40.0 feet

Information on file in the CCHD/SO.

1923 - John Greene, IN County Resurvey E-45, indicates iron monument.

Information on file in the CCHD/SO.

1925 - John Greene in County Book D, p. 180 set iron.

Information on file in the CCHD/SO.

2019 – Patrick A. Trottier, RLS 41002 finds no evidence. Determines position doubling distance and direction between found 1/16th corner to east and the established north quarter corner of section 6. Sets 1/2" x 18" iron pipe with plastic cap stamped "RLS 41002" and establishes the witnesses as shown on the face of this drawing.

County Coordinates (Cass County South NAD83/96)

Northing	241042.10
Easting	460289.36