



A000655868

OFFICE OF THE COUNTY RECORDER  
CASS COUNTY, MINNESOTA  
CERTIFIED, FILED, AND/OR  
RECORDED ON

12/5/2019 10:21:16 AM

AS DOC #: A000655868

PAGES: 2

REC FEES: 0.00

KATHRYN M. NORBY  
CASS COUNTY RECORDER

BY SF \_\_\_\_\_ Dep TX#: 158387

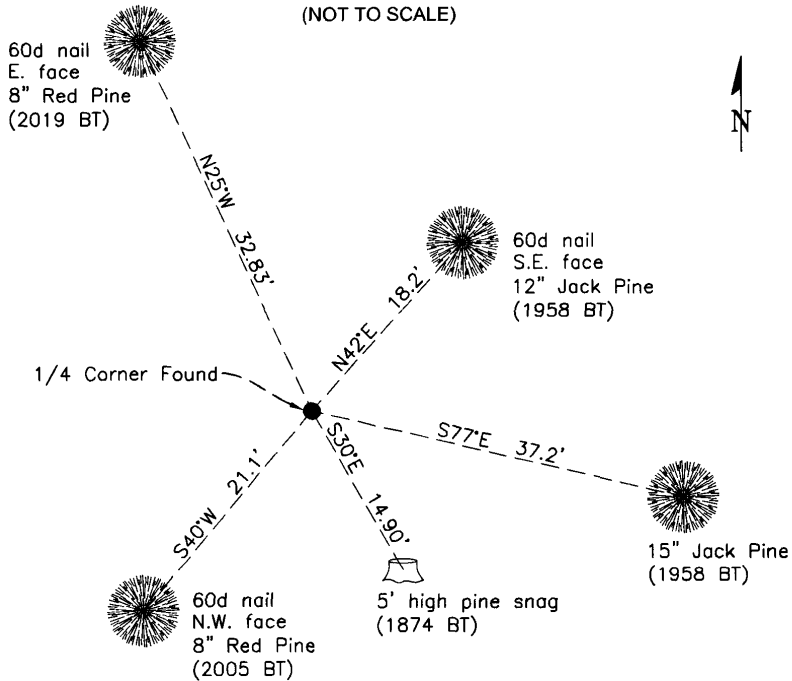
### CERTIFICATE OF LOCATION OF GOVERNMENT CORNER

North 1/4 Corner of Section 31, Township 145 N, Range 29 W, 5th P.M.  
County of Cass, State of Minnesota

At the corner location shown on the sketch :

- On 9/16/2019 found 2" iron pipe with 3" bronze tablet, in good condition,  
top was 12" above ground, stamped with RLS #3628
- left monument as found     lowered monument     removed monument (explain)
- On \_\_\_\_\_ set \_\_\_\_\_

#### SKETCH OF REFERENCE TIES (NOT TO SCALE)



Note:  
Distances shown are horizontal  
Bearings shown are geodetic

Statement of evidence relative to this corner location is on the back of this page

I hereby certify that this survey, plan, or report was prepared by me or under my direct supervision and that I am a duly Licensed Land Surveyor under the laws of the state of Minnesota.

*Aaron J. Skattum*

Aaron J. Skattum  
MN License No. 54139

12-2-2019  
Date

Corner Index No. V.0-3.0  
GCDB ID No. 140200

Cass County Coordinates  
North Zone, NAD83(2011)  
N: 295216.739'  
E: 453057.207'



Page 1 of 2

A000655868

Corner Index No. V.0-3.0

### STATEMENT OF EVIDENCE

North 1/4 Corner of Sec. 31, T.145N., R.29W., 5th P.M., Cass County, MN

1874 P.H. Conger, US General Land Office, originally established this corner while surveying the subdivision lines of this township, and set wood post to mark the corner position with the following witnesses:

16" Yellow Pine	S30°E	24 links (15.84')
18" Yellow Pine	N34°W	29 links (19.14')

Information on file at the MN Historical Society, St. Paul, MN. Copies filed with the Cass County Highway Department/Surveyor's Office (CCHD/SO).

1935 L. Henry, CCC party chief (CCC Book 107, Page 2, USFS records) notes an existing bearing tree found with "forest poster, marking it as 1/4 corner", which he used during his timber inventory traverse around Section 31 (did not specify which tree).

US Forest Service (USFS) records cited herein are on file at the Chippewa National Forest Supervisor's Office, Cass Lake, MN.

1958 P. Meyer, USFS (Corner Book 1, Page 11, USFS records), set a 2" i.d. x 5' galvanized iron pipe filled with concrete and capped with a 3" bronze tablet, from the remains of the GLO bearing trees. This corner has a previous certificate dated 1960, and was re-recorded in 2013 as Doc. A000590410, on file at the Cass County Recorder's Office. Ties from 1958:

16" Yellow Pine	S30°E	15.84'	1874 BT found, now 24" red pine w/ scribe visible
18" Yellow Pine	N34°W	19.14'	1874 BT found, now 20" red pine stump, 12" high, rotted and burned w/ no scribe visible
6" Jack Pine	S58°W	36.3'	new BT
7" Jack Pine	S76°E	37.1'	new BT
7" Jack Pine	N38°E	18.2'	new BT

1975 C. Krause, USFS (Corner Book 1, Page 11, USFS records) found the 1958 monument in good condition and noted the following ties:

24" Yellow Pine	S30°E	14.90'	1874 BT found, now 26", with faint scribe visible, old burn scars and some inside rot
6" Jack Pine	S61°W	36.2'	1958 BT found, now 10"
7" Jack Pine	S77°E	37.2'	1958 BT found, now 11"
7" Jack Pine	N42°E	18.2'	1958 BT found, now 10"
10" Jack Pine	West	1.0'	new FSLP on tree, blazed on 4 sides.

2005 R. Main, US Forest Service (Corner Book 1, Page 11, USFS records) found the 1958 monument in good condition, and added the following ties:

8" Red Pine	S40°W	21.10'	new BT
8' Steel Sign Post	North	1.8'	new sign
10" Jack Pine	S61°W	36.2'	1958 BT found, now 5' snag, scribe visible

2019 A. Skattum, USFS, (per Land Line Book 31, page 57, USFS records) found the 1958 monument in good condition, and noted the following ties:

26" Yellow Pine	S30°E	14.90'	1874 BT found, now 5' high hollow snag, blaze and faint scribe visible
18" Yellow Pine	N34°W	19.14'	1874 BT found, low mound of rotten wood, with BT tag laying flat and nailed to center (by others)
10" Jack Pine	S61°W	36.2'	1958 BT found dead, standing
11" Jack Pine	S77°E	37.2'	1958 BT found, now 15"
10" Jack Pine	N42°E	18.2'	1958 BT found, now 12"
10" Jack Pine	West	1.0'	1958 FSLP on tree, blazed on 4 sides.
8" Red Pine	S40°W	21.10'	2005 BT, found OK
Steel Sign Post	North	1.8'	2005 sign in-place
10" Jack Pine	N11°W	7.9'	1958 FSLP (by Lausche) on dead, standing tree
8" Red Pine	N25°W	32.83'	new BT