



A000653756

OFFICE OF THE COUNTY RECORDER
CASS COUNTY, MINNESOTA
CERTIFIED, FILED, AND/OR
RECORDED ON

9/26/2019 11:31:07 AM

AS DOC #: A000653756

PAGES: 2

REC FEES: 0.00

KATHRYN M. NORBY
CASS COUNTY RECORDER

BY NG Dep TX#: 156684

Page 1 of 2
A000653756

CERTIFICATE OF LOCATION OF GOVERNMENT CORNER

I hereby certify that this survey, plan, or report was prepared by me or under my direct supervision and that I am a duly Licensed Land Surveyor under the laws of the State of Minnesota.

Patrick A. Trotter

Patrick A. Trotter

Date: 9-19-2019 License No: 41002

PLS# 41002

South Quarter Corner of Section 33, Township 137 N, Range 31 W, 5th P.M.

On _____ found a _____

left monument as found; lowered monument; removed monument (explain)

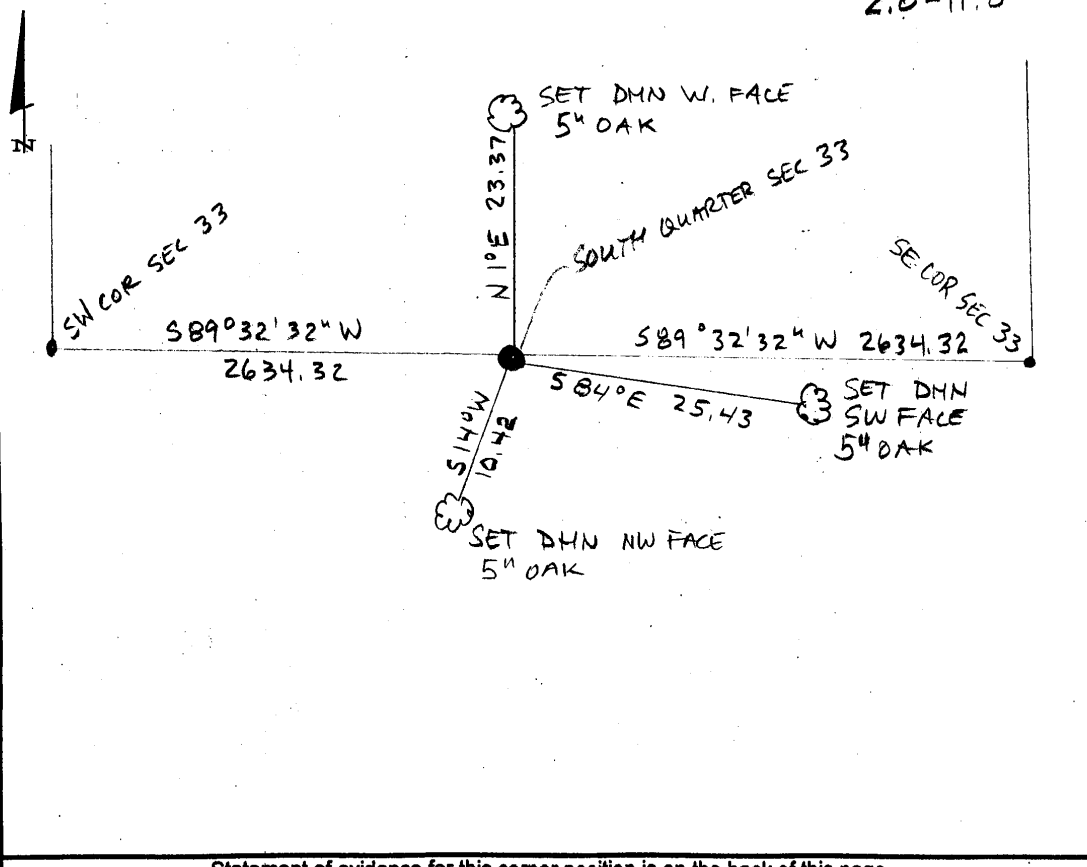
On 8-20-19 placed a 1/2" x 30" iron pipe with plastic cap
stamped "RLS 41002", up 0⁺

SKETCH OF REFERENCE TIES

Not to Scale

Corner Index:

2.0-11.0





Z.0-11.0

Statement of Evidence

**South quarter corner, Section 33, Township 137 North, Range 31
West, 5th Principal Meridian, Cass County, Minnesota**

1858 – E.D. Atwater, General Land Office (GLO) Surveyor originally established this corner position while surveying south township line of Township 137 North, Range 31 West. A wood post was set to mark the corner position with the following witnesses:

16" Y. Pine N 6 1/4° E 50 links

17" Y. Pine N 15 1/2 ° W 50 links

Information on file in the MN Historical Society, St. Paul, MN. Copies on file in the Cass County Highway Department/Surveyors Office (CCHD/SO).

2019 – Patrick A. Trottier, RLS 41002 finds no evidence of corner and determines position by single proportion method between found SW corner of Section 36 and established SE corner of Section 33, both in T137N R 31W and through found NE corner Section 1, T136N R32W. Sets 1/2" x 18" iron pipe with plastic cap stamped "RLS 41002" as the perpetuation of the corner and establishes the witnesses as shown on the face of this drawing.

County Coordinates (Cass County South NAD83/96)

Northing 272967.00

Easting 464489.17