



A000653755

OFFICE OF THE COUNTY RECORDER  
CASS COUNTY, MINNESOTA  
CERTIFIED, FILED, AND/OR  
RECORDED ON

9/26/2019 11:31:06 AM

AS DOC #: A000653755

PAGES: 2

REC FEES: 0.00

KATHRYN M. NORBY  
CASS COUNTY RECORDER

BY NG Dep TX#: 156684

### CERTIFICATE OF LOCATION OF GOVERNMENT CORNER

I hereby certify that this survey, plan, or report was prepared by me or under my direct supervision and that I am a duly Licensed Land Surveyor under the laws of the State of Minnesota.

*Patrick A. Trotter*

Patrick A. Trotter

Date: 9-19-2019 License No: 41002  
PLS# 41002

Southeast Corner of Section 32, Township 137 N, Range 31 W, 5<sup>th</sup> P.M.

On \_\_\_\_\_ found a \_\_\_\_\_

left monument as found,  lowered monument,  removed monument (explain)

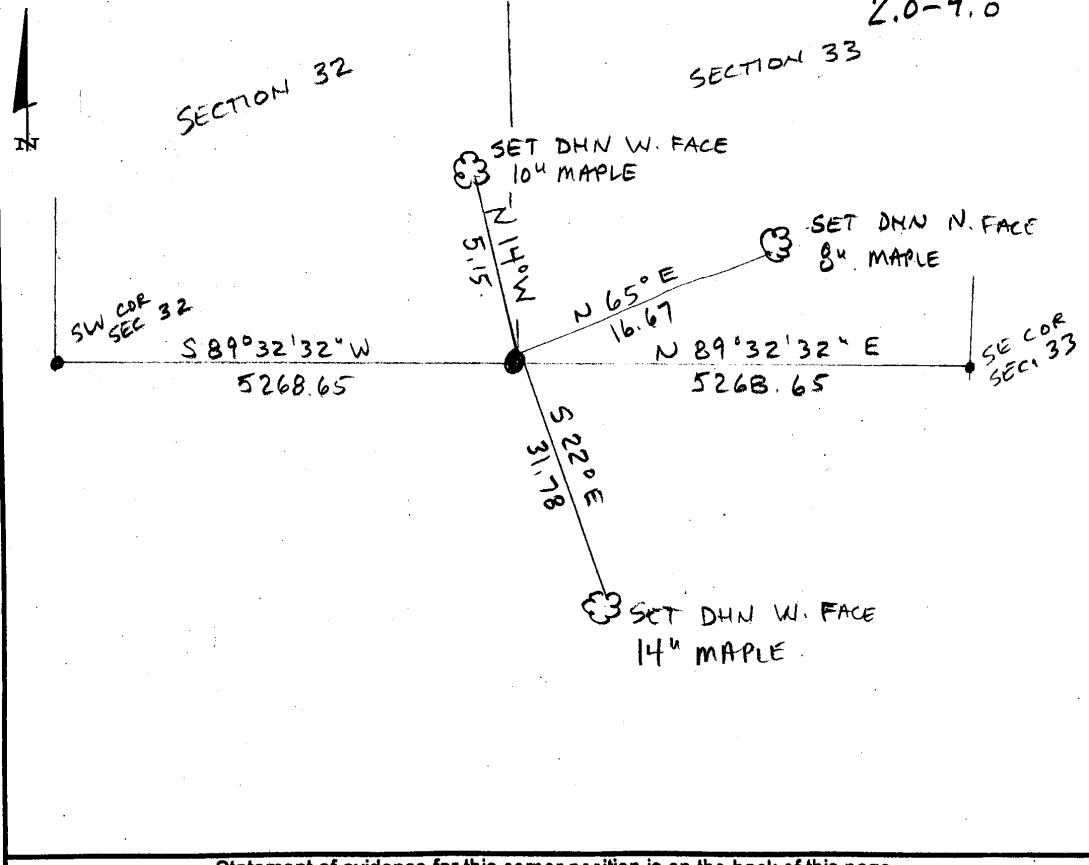
On 8-20-19 placed a 1/2" x 18" iron pipe with plastic cap stamped "RLS 41002", up 0 3/4"

### SKETCH OF REFERENCE TIES

Corner Index:

Not to Scale

2.0-9.0





**Z.0-9.0**

**Statement of Evidence**

**Southeast corner, Section 32, Township 137 North, Range 31  
West, 5<sup>th</sup> Principal Meridian, Cass County, Minnesota**

1858 – E.D. Atwater, General Land Office (GLO) Surveyor originally established this corner position while surveying south township line of Township 137 North, Range 31 West. A wood post was set to mark the corner position with the following witnesses:

6" Oak	N 50 3/4° E	19 links
7" W. Birch	N 43 1/2 ° W	47 links

Information on file in the MN Historical Society, St. Paul, MN. Copies on file in the Cass County Highway Department/Surveyors Office (CCHD/SO).

2019 – Patrick A. Trottier, RLS 41002 finds no evidence of corner and determines position by single proportion method between found SW corner of Section 36 and established SE corner of Section 33, both in T137N R 31 W and through found NE corner Section 1, T136N R32W. Sets 1/2" x 18" iron pipe with plastic cap stamped "RLS 41002" as the perpetuation of the corner and establishes the witnesses as shown on the face of this drawing.

County Coordinates (Cass County South NAD83/96)

Northing	272945.95
Easting	461854.93