



A000653750

OFFICE OF THE COUNTY RECORDER  
CASS COUNTY, MINNESOTA  
CERTIFIED, FILED, AND/OR  
RECORDED ON

9/26/2019 11:31:01 AM

AS DOC #: A000653750

PAGES: 2

REC FEES: 0.00

KATHRYN M. NORBY  
CASS COUNTY RECORDER

BY NG Dep TX#: 156684

Page 1 of 2  
A000653750

### CERTIFICATE OF LOCATION OF GOVERNMENT CORNER

I hereby certify that this survey, plan, or report was prepared by me or under my direct supervision and that I am a duly Licensed Land Surveyor under the laws of the State of Minnesota.

*Patrick A. Trotter*

Patrick A. Trotter

Date: 9-19-2019 License No: 41002

PLS# 41002

North Quarter Corner of Section 32, Township 137 N, Range 31 W, 5<sup>th</sup> P.M.

On \_\_\_\_\_ found a \_\_\_\_\_

left monument as found,  lowered monument,  removed monument (explain)

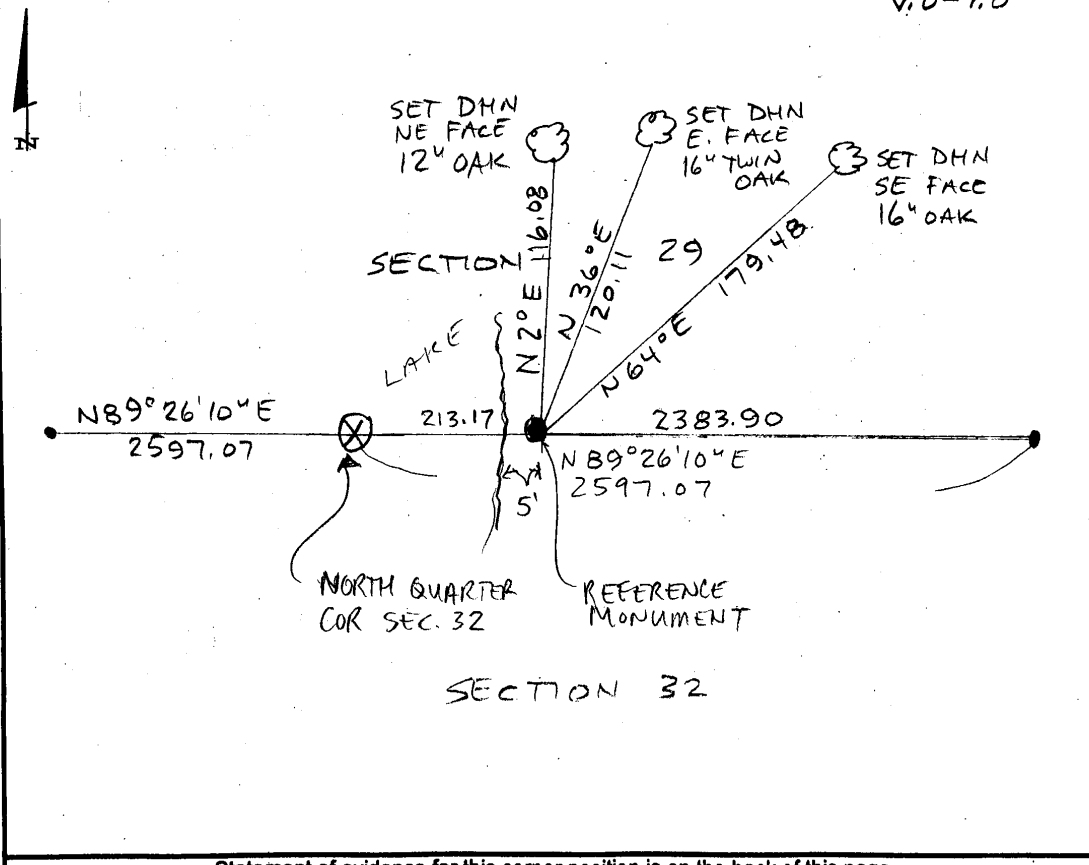
On 8-21-19 placed a 1/2" x 18" iron pipe with plastic cap stamped "RLS 41002" as a reference monument, lying 213.17' east of calculated position.

### SKETCH OF REFERENCE TIES

Not to Scale

Corner Index:

V.0-7.0





V.0-7.0

Statement of Evidence

**North quarter corner, Section 32, Township 137 North, Range 31  
West, 5<sup>th</sup> Principal Meridian, Cass County, Minnesota**

1870 – R. Cronk, General Land Office (GLO) Surveyor originally established this corner position while surveying the interior subdivision lines of Township 137 North, Range 31 West. A wood post was set to mark a witness corner position 3.23 chains east of true corner position with the following witnesses:

8" Tam.	N 20° E	18 links
4" Tam.	S 70° E	7 links

Information on file in the MN Historical Society, St. Paul, MN. Copies on file in the Cass County Highway Department/Surveyors Office (CCHD/SO).

2019 – Patrick A. Trottier, RLS 41002 finds no evidence of corner and determines position by single proportion method between established NW and NE corners of Section 32. Sets 1/2" x 18" iron pipe with plastic cap stamped "RLS 41002" as a reference monument to the true corner, lying 213.17 feet east of true corner and on north line of Northeast Quarter, said section, and establishes the witnesses to the reference monument as shown on the face of this drawing

County Coordinates (Cass County South NAD83/96)

Calculated corner position:

Northing	278193.61
Easting	459143.79

Reference monument position:

Northing	278195.71
Easting	459356.95