



A000653236

OFFICE OF THE COUNTY RECORDER  
CASS COUNTY, MINNESOTA  
CERTIFIED, FILED, AND/OR  
RECORDED ON

9/11/2019 10:25:45 AM

AS DOC #: A000653236

PAGES: 2

REC FEES: 0.00

KATHRYN M. NORBY  
CASS COUNTY RECORDER

BY NG Dep TX#: 156297

Index No. X.0-25.0

I hereby certify that this document was prepared by me or under my direct supervision and that I am a duly Licensed Land Surveyor under the laws of the State of Minnesota

*Paul Herkenhoff*  
PAUL HERKENHOFF

Date 8/15/19 License No. 45875

### CERTIFICATE OF LOCATION OF GOVERNMENT CORNER

EAST QUARTER Corner of Section 36, Township 134, Range 32, 5TH P.M.

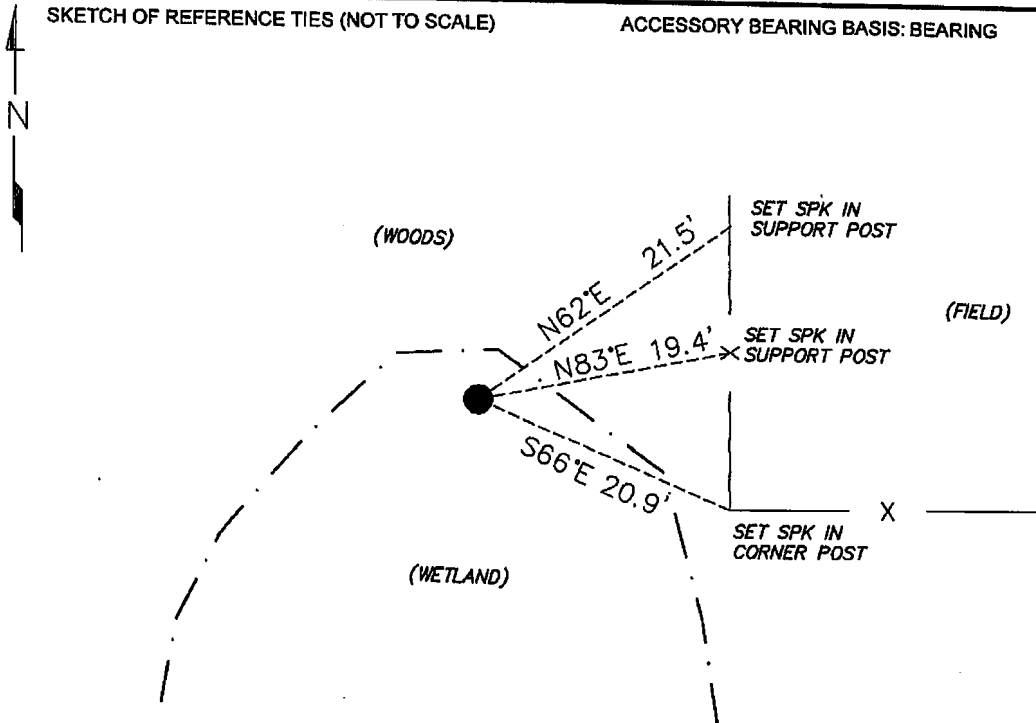
STATE OF MINNESOTA, County of CASS

At the location shown on the sketch:

- On \_\_\_\_\_ found \_\_\_\_\_  
DATE
- left monument as found,  lowered monument,  removed monument (explain)
- On 4/17/19 placed an 1/2" IRON PIPE WITH RLS CAP 45875  
DATE

SKETCH OF REFERENCE TIES (NOT TO SCALE)

ACCESSORY BEARING BASIS: BEARING



N= 180385.07 E= 452813.90  
 DATUM= CASS COUNTY SOUTH  
NAD 83/96 ADJ. US SURVEY FT.

Statement of evidence relative to this corner is on back of page.



**Index No. X.0-25.0**

Statement of Evidence:

**East Quarter Corner of Section 36, Township 134, Range 32 West, 5th Principle Meridian, Cass County, Minnesota**

- Jan 1858      E.D. Atwater, General Land Office (GLO) Deputy Surveyor in the survey of the east line of Township 134 North, Range 32 West set a post for the original corner and referenced it as follows:
- |                |          |           |
|----------------|----------|-----------|
| 18" White Pine | S74-3/4W | 420 links |
| 9" Aspen       | N4-1/4E  | 391 links |
- 2004      Westwood professional Services set this corner at a lost position between the Northeast Corner of Section 36 and the Southeast Corner of Section 36. Westwood used this corner for a survey in the Southwest Quarter of Section 36.
- 2005      Westwood Professional Services prepared a Certificate of Government Corner Location for the East Quarter Corner of Section 36, recorded as Document Number A000509674, which is on file in the office of the Cass County Recorder.
- 2011      Westwood Professional Services, along with the Cass County Highway Department excavated and found a 8x8x36" Stone monument, set in 1911 from original GLO evidence. This changed the previous location of the Southeast Corner of Section 36 by 3.6 feet. Westwood Professional Services prepared a Certificate of Government Corner Location for the Southeast Corner of Section 36, recorded as Document Number A000583927.
- 2019      Lakes Area Surveying searched the area for all previous evidence, finding the 2004 Westwood Monument. Because the Southeast Corner of Section 36 used by Westwood in 2004 was wrong. Lakes Area Surveying established a new position for this corner using a lost position between the 2011 Westwood position for the Southeast Corner of Section 36 and the Northeast Corner of Section 36. The corner measures within 0.2 feet of GLO distance to the Southeast and Northeast Corner of Section 36.

**Analysis of the recovered record data, field evidence and survey measurements, indicates that the monument found by Lakes Area Surveying in 2019 is the accepted location of this corner.**