



A000652984

OFFICE OF THE COUNTY RECORDER  
CASS COUNTY, MINNESOTA  
CERTIFIED, FILED, AND/OR  
RECORDED ON

9/4/2019 10:45:00 AM

AS DOC #: A000652984

PAGES: 2

REC FEES: 0.00

KATHRYN M. NORBY  
CASS COUNTY RECORDER

BY NG Dep TX#: 156113

Page 1 of 2  
A000652984

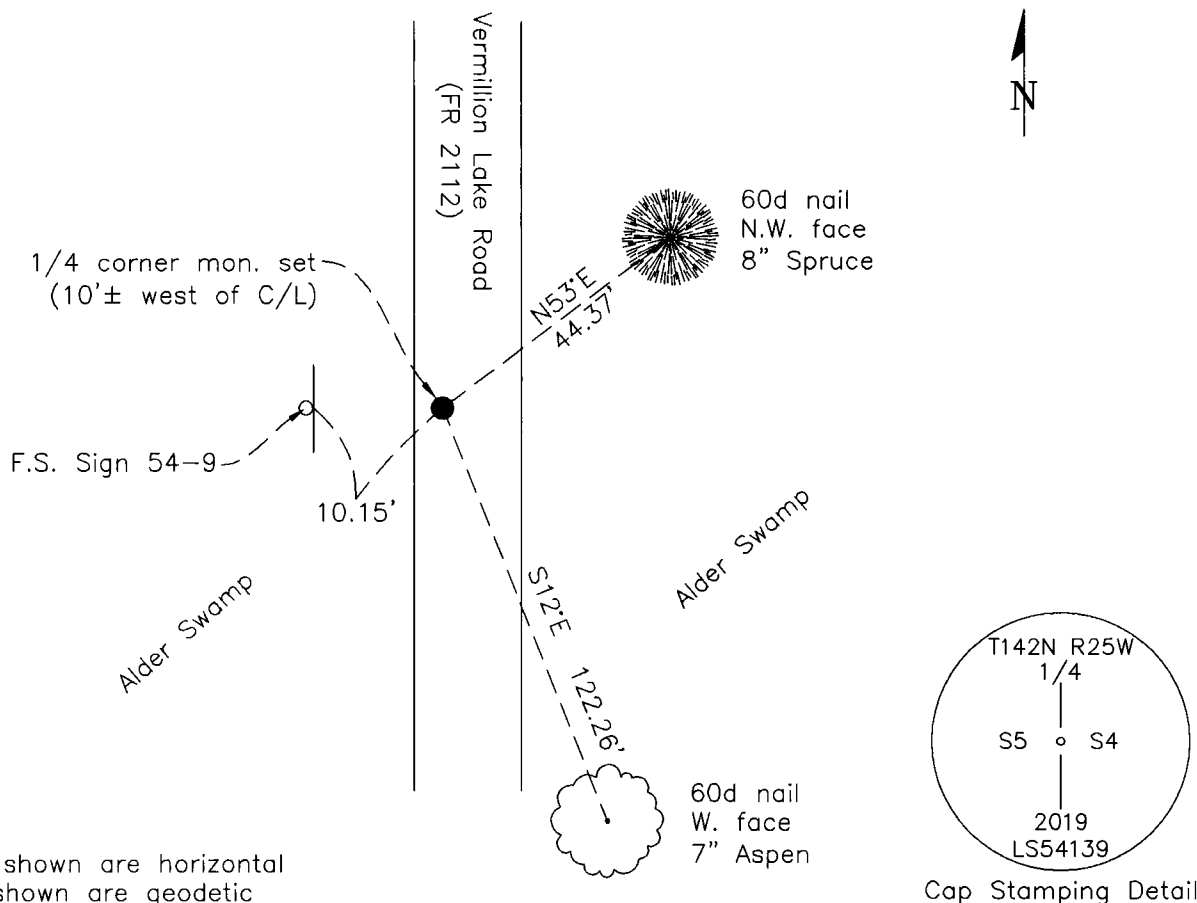
### CERTIFICATE OF LOCATION OF GOVERNMENT CORNER

East 1/4 Corner of Section 5, Township 142 N, Range 25 W, 5th P.M.  
County of Cass, State of Minnesota

At the corner location shown on the sketch :

- On August 8, 2018 found Spike nail with orange flagging, well rusted, and bits of decayed wooden stake down to a depth of 24" in west edge of road.
- left monument as found     lowered monument     removed monument (explain)
- On June 20, 2019 set 2.5"x24" iron pipe with flared end and 3.25" bronze cap stamped as shown, top 0.6' below road surface, at the location of the found spike.

#### SKETCH OF REFERENCE TIES (NOT TO SCALE)



Note:  
Distances shown are horizontal  
Bearings shown are geodetic

Statement of evidence relative to this corner location is on the back of this page

I hereby certify that this survey, plan, or report was prepared by me or under my direct supervision and that I am a duly Licensed Land Surveyor under the laws of the state of Minnesota.

*Aaron J. Skattum*  
Aaron J. Skattum  
MN License No. 54139

7/18/2019  
Date

Cass County Coordinates  
(North Zone, 2011 Adj.)  
N: 224,168.161  
E: 588,938.407

GCDB ID No. 300640  
Corner Index No. C.0-9.0



Corner Index No. C.0-9.0

**STATEMENT OF EVIDENCE**

East 1/4 Corner of Sec. 5, T.142N., R.25W., 5th P.M., Cass County, MN

1871 W.P. Allen & E.P. Putnam, U.S. General Land Office, originally established this corner while surveying the subdivision lines of this township, and set wood post to mark the corner position with the following witnesses:

10" Spruce	S62°W	24 links	(15.84')
8" Spruce	N81°E	22 links	(14.52')

Information on file at the MN Historical Society, St. Paul, MN. Copies filed with the Cass County Highway Department/Surveyors Office (CCHD/SO)

1922 J.H. Flynn, County Surveyor, County Survey Record Book D, Page 52 and Curo Book 152, Page 172, found the GLO bearing trees and 1/4 corner post, but does not mention setting a new monument. The following ties were noted:

10" Spruce	S62°W	15.84'	1871 BT, stump
8" Spruce	N81°E	14.52'	1871 BT, down
7" Tamarack	S47.5°W	31'	new BT
7" Tamarack	N70°E	29'	new BT

Information on file at CCHD/SO

1963 W. Okerman, U.S. Forest Service, (Corner Restoration Book 1, Page 10, USFS records) found the remains of one of Flynn's tamarack bearing trees that places the corner on the west edge of the road, and noted that it matched the county running notes very well.

USFS records cited herein are on file at the Chippewa National Forest Supervisor's Office

2019 A. Skattum, U.S. Forest Service, (Land Line Book 30, Page 73, USFS records) found a 6" long rusty nail, upright and firmly set, with orange flagging below the surface of a gravel road. Excavation under this nail found remnants of a wooden stake to a depth of approximately 24". This nail is believed to be a perpetuation of the corner position determined by Okerman in 1963. At the position of this nail a monument was set as noted on the front of this document, and the following references were established:

8" Spruce	N53°E	44.37'	new BT
7" Aspen	S12°E	122.26'	new BT
USFS Sign	West	10.15'	to nearest edge of sign post

No evidence of previous bearing trees was found.