



A000652196

OFFICE OF THE COUNTY RECORDER
CASS COUNTY, MINNESOTA
CERTIFIED, FILED, AND/OR
RECORDED ON

8/8/2019 11:09:06 AM

AS DOC #: A000652196

PAGES: 2

REC FEES: 0.00

KATHRYN M. NORBY
CASS COUNTY RECORDER

BY KF Dep TX#: 155513

A000652196

Page 1 of 2

Twp 144 Rge 31 Index No. R.0-07.2

CERTIFICATE OF LOCATION OF GOVERNMENT CORNER

Witness to MC #35 of Section 20&29, Township 144 N., Range 31 W., 5th P.M.

State of Minnesota, County of Cass

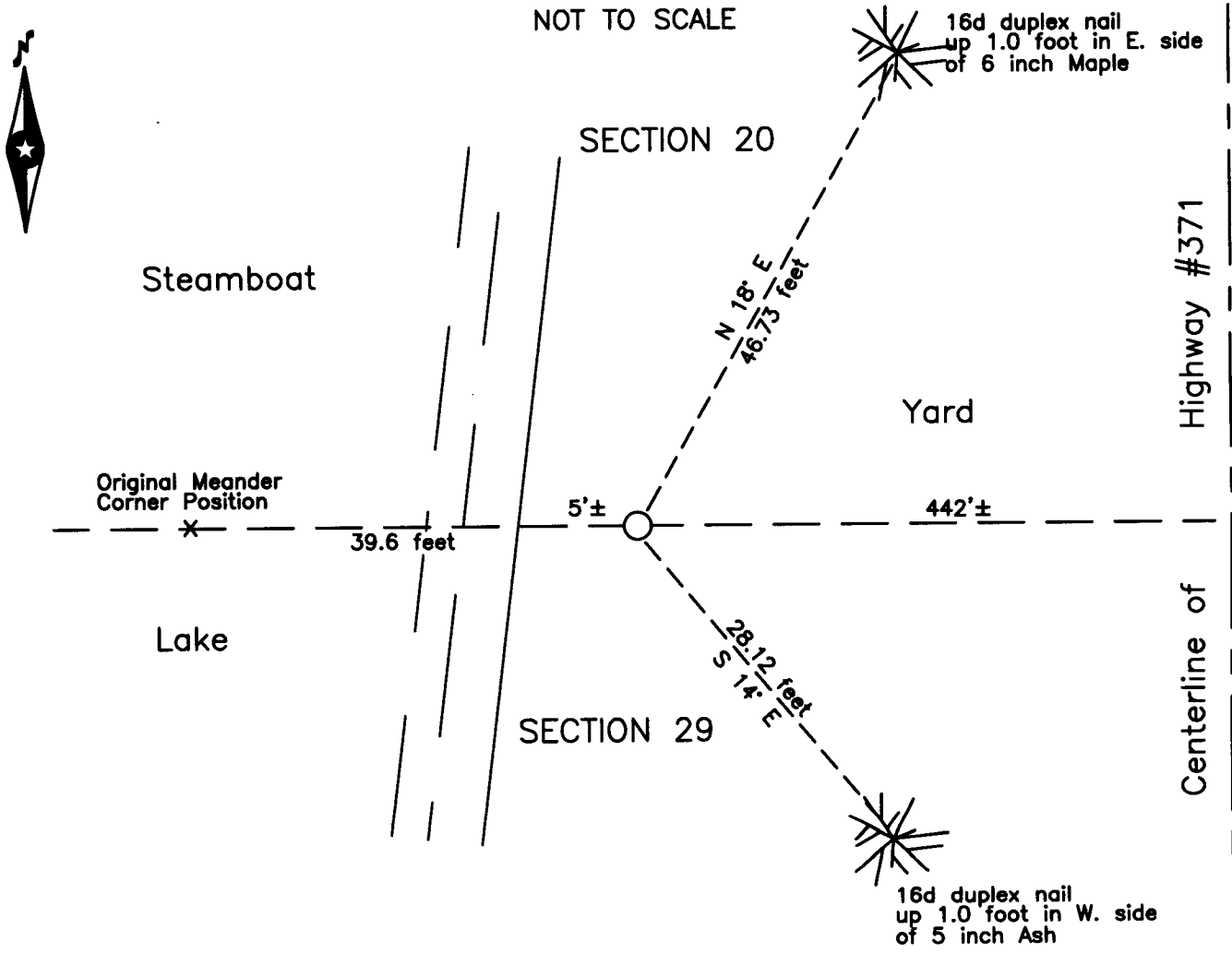
At the corner location shown on the sketch:

On _____ found _____

left monument as found lowered monument removed monument (explain)

On 30 July 2019 placed a 7/8 inch iron pipe capped RLS 21367, flush in lawn,
5 feet± east of the shore of Steamboat Lake.

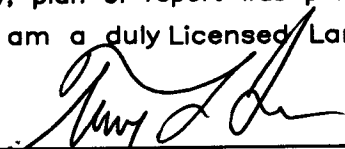
SKETCH OF REFERENCE TIES
NOT TO SCALE



NOTE:
All bearings are true

Statement of evidence relative to this corner location is on the back of this page.

I hereby certify that this survey, plan or report was prepared by me or under my direct supervision and that I am a duly Licensed Land Surveyor under the laws of the State of Minnesota.


Terry L. Freeman, Cass County Surveyor
Date 8/7/19 MN License No. 21367



Index No. R.0-07.2

Statement of Evidence

Meander corner of Section 20 and 29, Township 144 North, Range 31 West, 5th Principal Meridian.

Aug. 1875 B.C. Baldwin, General Land Office (GLO) Deputy Surveyor, in the notes of the subdivision of Township 144 North, Range 31 West, set a post for the original corner and referenced it as follows:
 16" Elm S 52 1/2° E 53 links (34.98 feet) 3" Balm of Gilead N 78° E 28 links (18.48 feet)

May 1931 H.D. Craig, U. S. Surveyor, in the notes of the Dependent Resurvey of a portion of Township 144 North, Range 31 West, page 146, found fallen 22 inch Elm with blaze, position falls in edge of sandy shore. At N 89°50' E, 0.60 chains(39.60 feet) from this position, set a brass tablet in a 24 inch long, 6 inch diameter concrete form, 23 inches in the ground, on top of bank, 10 feet above shore for witness to the meander corner and referenced it as follows:
 5" Sugar Maple N 59° E 36 links (23.76 feet) 12" Burr Oak S 44 1/4° E 51 links (33.66 feet)
 The above record is on file with the Minnesota Historical Society in St. Paul, Minnesota, copies are filed with the Cass County Highway Department, Surveyor's Office (CCHD/SO).

Circa 1932 Minnesota Department of Transportation(MnDOT), right of way map, on file on the MnDOT web site, file 5-3_002 indicates Concrete Monument and brass cap U.S.G.L.O.S 1931, 441.9 feet West of centerline Highway #371 at station 500+04.8.

July 2019 B. Hippen, technician, records of the CCHD/SO, set a 7/8 inch outside diameter iron pipe, capped RLS 21367, at the 1931 bearing and distance from the recovered east 1/16 corner, flush in lawn, 5 feet, more or less, east of the water edge of Steamboat Lake and witnessed as follows:
 6" Maple N 18° E 45.73 feet 5" Ash S 14° E 28.12 feet

The monument, recovered and established references for the position are shown on the face of this document.

Analysis of the recovered record data, field evidence and survey measurements, indicates that the monument set in 2019 by CCHD/SO is the accepted location of this corner.

County Coordinates (Cass County North)

Northing 268654.11

Easting 397589.07