



A000652190

OFFICE OF THE COUNTY RECORDER  
CASS COUNTY, MINNESOTA  
CERTIFIED, FILED, AND/OR  
RECORDED ON

8/8/2019 11:09:00 AM

AS DOC #: A000652190

PAGES: 2

REC FEES: 0.00

KATHRYN M. NORBY  
CASS COUNTY RECORDER

BY KF Dep TX#: 155513

Twp 142 Rge 28 Index No. A.0-21.0

# CERTIFICATE OF LOCATION OF GOVERNMENT CORNER

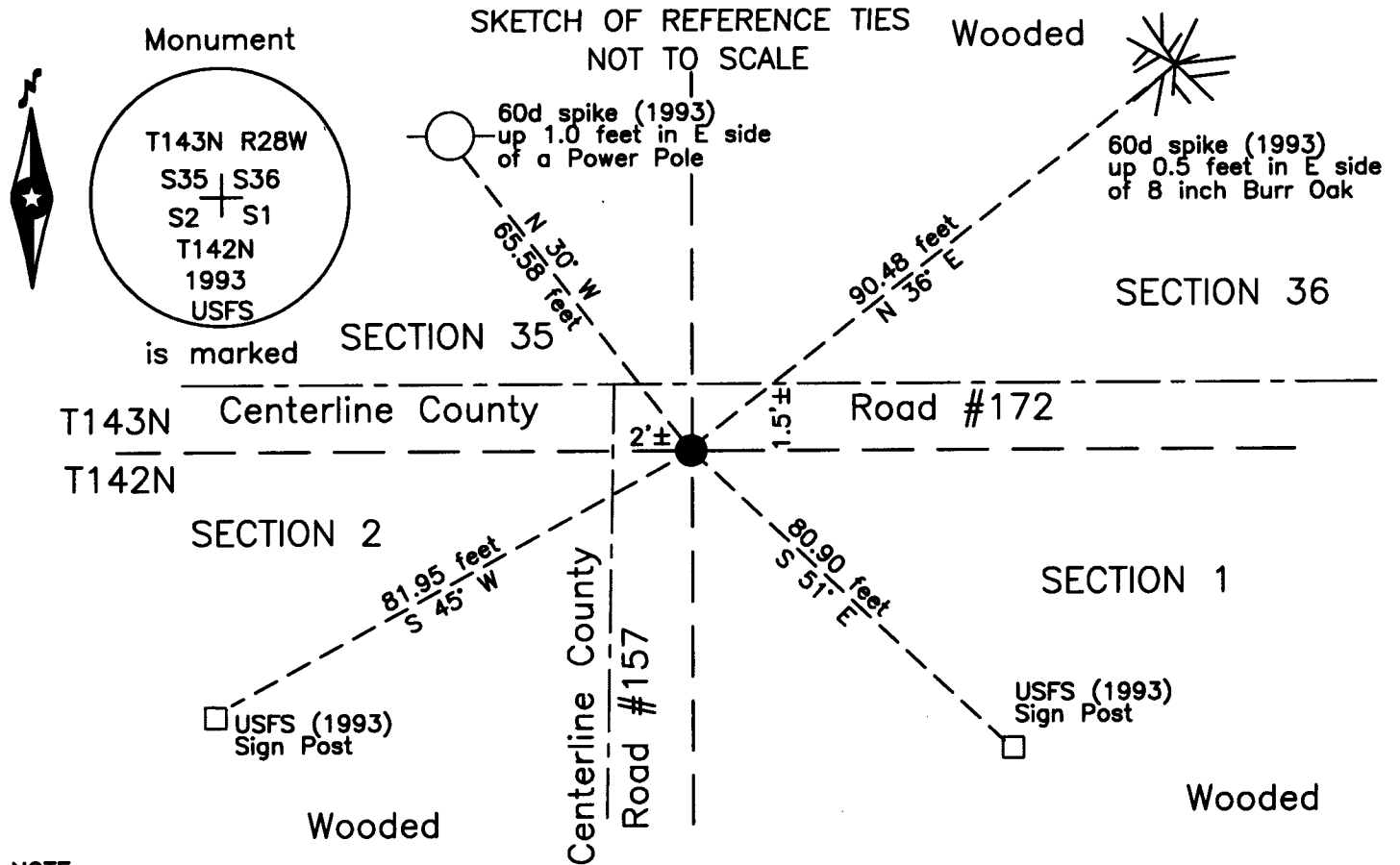
Northeast Corner of Section 2, Township 142 N., Range 28 W., 5th P.M.  
State of Minnesota, County of Cass

At the corner location shown on the sketch:

On 16 July 2009 found USFS brass capped iron pipe, down 1.0 foot, 2.1 feet±  
south of centerline of County Road #172 on centerline of County Road #157.

left monument as found     lowered monument     removed monument (explain)

On 2 Aug. 2019 found a magnetic concrete nail, 1.5 feet± south of  
centerline of County Road #172 2 feet± east of centerline of County Road #157.



NOTE:  
All bearings are true

Statement of evidence relative to this corner location is on the back of this page.

I hereby certify that this survey, plan or report was prepared by me or under my direct supervision and that I am a duly Licensed Land Surveyor under the laws of the State of Minnesota.

Terry L. Freeman, Cass County Surveyor  
Date 8/7/19 MN License No. 21367



**Index No. A.0-21.0**

Statement of Evidence

**North East corner Section 2, Township 142 North, Range 28 West, 5th Principal Meridian.**

- July 1873 P.H. Conger, GLO Deputy Surveyors, in the notes of the Township line between Township 142 and 143 North, Range 28 West, set a post for the original corner and referenced it as follows:  

12" Birch	N 66° E	7 links ( 4.62 feet)	8" Birch	N 64° W	13 links (8.58 feet)
6" Birch	S 20° W	16 links (10.56 feet)	5" Spruce	S 64° E	10 links (6.60 feet)

 The above records are on file with the Minnesota Historical Society, St. Paul, Minnesota, copies are filed with the Cass County Highway Department, Surveyor's Office (CCHD/SO).
- May 1916 H.F. Baldwin, Deputy County Surveyor, Survey Record #287, Book B, pages 216, 217 and 219 and Curo Book 55, page 6 and 18, on file in the CCHD/SO, states "We find corner with three bearing trees standing: they are badly out of place as follows:  

12" Birch	N 81° E	20.50 feet	6" Birch	S 61° W	36.30 feet
5" Spruce	S 59° E	35.70 feet"			

 Later states "At 5065.40 North the true corner to sections 1, 2, 35, 36 sets West 241.60 feet: We accept the old original corner as correct." The pictorial indicates this mile to be 5071.10 feet. Page 219 states an iron monument was set.
- May 1916 H.F. Baldwin, Deputy County Surveyor, Survey Record #288, Book B, page 226 and Curo Book 77, page 17, on file in the CCHD/SO, lists U.S. witness trees and states "These trees are gone, but the corner post has been established by a later survey as is accepted by the natives as correct, since this country was opened for homestead entry:" On page 234 states an iron monument was set.
- Aug 1919 E.B. Horst, LS 376, Deputy County Surveyor, Survey Record #435, Book C, page 342, on file in the CCHD/SO, states 23664.6 I.M. to cor. of secs 1-2-142-28 35-36-143-28.
- June 1928 E.G. Harrington, U.S. Cadastral Engineer and H.D. Craig, U.S. Surveyor, assisted by W.E. Hiester and W. Cook, U.S. Transitmen, GLO, Dependent Resurvey of the North Boundary and Subdivisional Lines Township 142 North, Range 28 West, on file with the Secretary of State, St. Paul, Minnesota, copies are filed with the CCHD/SO, Preliminary statement "The field notes of a portion of the work executed by Harrington were lost, necessitating the retracement of that work during the season of 1928". Notes state "The accepted point for the corner of secs. 1, 2, 35, and 36, which is marked by a galvanized iron pipe, 2 ins. diam., with cap flush with ground, set by County Surveyor of Cass County, Minnesota. As this cor is well marked by iron pipe no iron post is set. No accessories available."
- Dec 1933 Final Road Order of Town Board, on file in the CCHD/SO, Surveyor's Report and plat indicates road on the north and east lines of Section 2, states "No survey made as road follows section line."
- July 1993 C. Krause and R. Main, technicians, United States Department of Agriculture Forest Service (USFS), T 142N R 28 W, Book 6, page 14, on file in the USFS Cass Lake Office, states "Fd. 2 1/2" x 36" county iron pipe - top near surface of road - bent slightly to north - top 12" & cap are gone - in place of county iron pipe we set a 2" x 24" iron pipe with brass cap 12" below road" and witnessed as follows:  

8" W. Oak	N 36° E	90.48 feet	Power Pole	N 30° W	65.58 feet
Steel Sign Post	S 51° E	80.90 feet	Steel Sign Post	S 45° W	81.95 feet
- Sept. 2002 B. Hippen and C. Loe, technicians, records of the CCHD/SO, found a 1/2 inch iron pipe, down 1.0 foot, 2 feet, more or less, south of centerline of County Road #172 and 2 feet, more or less, east of centerline of County Road #157 and the 1993 USFS witnesses.
- July 2009 B. Hippen, technician, records of the CCHD/SO, found a 3/4 inch iron pipe, down 1.0 foot and USFS brass capped monument, down 2.1 feet, reset 3/4 inch iron pipe, down 0.5 foot over brass cap. USFS 1993 witnesses all in good condition.
- Aug. 2019 B. Hippen, technician, records of the CCHD/SO, found a magnetic concrete nail, 1.5 feet, more or less, south of centerline of County Road #172 and 2 feet, more or less, east of centerline of County Road #157 the USFS 1993 witnesses in good condition.

The monument, recovered and established references for the position are shown on the face of this document.

**Analysis of the recovered record data, field evidence and survey measurements, indicates that the monument recovered by the CCHD/SO in 2009 is the accepted location of this corner.**

**County Coordinates (Cass County North)**

**Northing 227748.32**  
**Easting 509261.43**