



A000651781

OFFICE OF THE COUNTY RECORDER
 CASS COUNTY, MINNESOTA
 CERTIFIED, FILED, AND/OR
 RECORDED ON

7/25/2019 12:40:24 PM

AS DOC #: A000651781

PAGES: 2

REC FEES: 0.00

KATHRYN M. NORBY
 CASS COUNTY RECORDER

BY SF _____ Dep TX#: 155173

Twp 144 Rge 26 Index No. N.0-25.0

CERTIFICATE OF LOCATION OF GOVERNMENT CORNER

Northeast corner of Section 24, Township 144 N., Range 26 W., 5th P.M.
 State of Minnesota, County of Cass

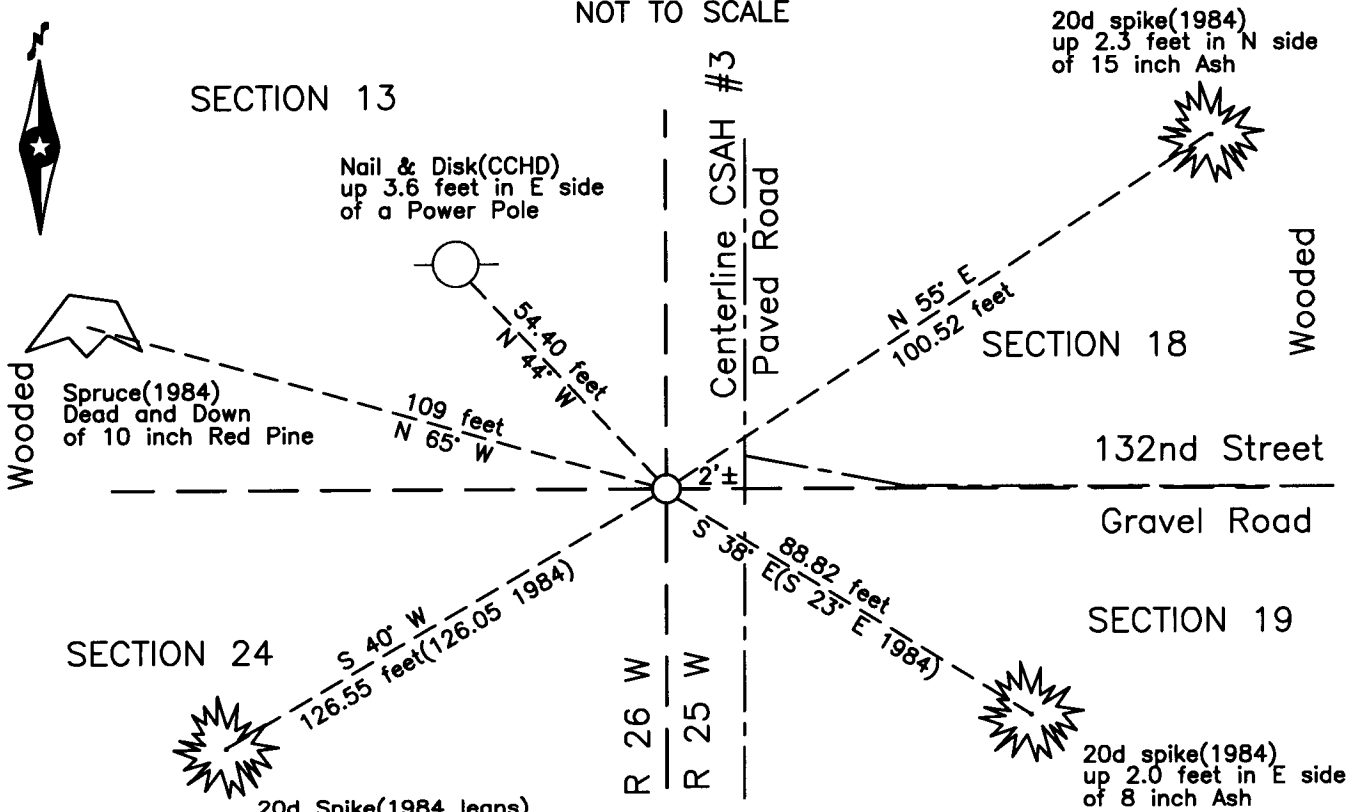
At the corner location shown on the sketch:

On 18 July 2018 found a 1.5 inch magnetic concrete nail, flush, 2 feet± west
of the centerline of CSAH #3 on the centerline extension of 132nd Street.

left monument as found lowered monument removed monument (explain)

On _____ placed _____

**SKETCH OF REFERENCE TIES
 NOT TO SCALE**



NOTE:
 All bearings are true

Statement of evidence relative to this corner location is on the back of this page.

I hereby certify that this survey, plan or report was prepared by me or under my direct supervision and that I am a duly Licensed Land Surveyor under the laws of the State of Minnesota.

Terry L. Freeman, Cass County Surveyor
 Date 7/24/19 MN License No. 21367

Statement of Evidence

Northeast corner of Section 24, Township 144 North, Range 26 West, 5th Principal Meridian.

- Feb. 1903 O.C. Gilbert, deputy under J.M. Canfield, County Surveyor, plat of Zuzu & Bear River Road, and Auditors Road Calendar A, pages 3, 8, & 44 and Auditors Road Calendar B, page 30 all on file at the Cass County Highway Department, Surveyors Office(CCHD/SO) indicates this corner by symbol and shows dimensions south and east to other corners.
- 1983 Cass County Highway Department (CCHD), S.P. 11-603-05, plan on file in the CCHD indicates the subject corner at P.I. Station 74+65.4 and witnesses as follows:

4" Balsam	SW	89.7 feet	Power Pole	NW	54.7 feet
-----------	----	-----------	------------	----	-----------
- May 1985 J. Parker, LS 9235, under contract with the United States Forest Service (USFS), set a 5/8" diameter by 36" aluminum rod with a stamped 3" aluminum cap in the obliterated position, 0.4' below the road surface, on centerline of CSAH #3 and centerline of a Township road to the east. He recorded a Certificate of Location of Government Corner in the Cass County Recorders Office (CCRO) on May 8, 1985 as **Document Number 281801**. The document indicates the corner witnessed as follows:

11" Ash	N 55° E	100.52 feet	7" Ash	S 23° E	88.82 feet
12" Cedar	S 40° W	126.05 feet	7" Spruce	N 65° W	108.89 feet
- July 2011 B. Hippen, technician, records of the CCHD/SO, prior to reconstruction of CSAH #3, excavated a 1.5 foot east-west by 1.5 foot north-south area based on recovered witnesses. The dig was 1.5 feet deep to change in soil. No evidence of Aluminum rod monument, a 60d spike was recovered down 0.7 foot, this fit the 1983 CCHD Power Pole witness, but does not agree with 1985 witnesses.
- Aug. 2011 B. Hippen, technician, records of the CCHD/SO, set a magnetic concrete nail from witnesses 2 feet, more or less, west of new bituminous centerline and added witnessed as follows:

8" Ash (1985)	S 38° E	88.82 feet	Power Pole (1983)	N 44° W	54.40 feet
---------------	---------	------------	-------------------	---------	------------
- July 2019 B. Hippen, technician, records of the CCHD/SO, found a magnetic concrete nail 2 feet, more or less, west of centerline of CSAH #3 and the 1985 and 2011 witnesses.

The recovered and established witnesses for this corner position are shown on the face of this document.

Analysis of the recovered record data, field evidence and survey measurements, indicates that the position recovered in 2011 by the CCHD/SO, is the accepted location of this corner.

County Coordinates (Cass County North)

Northing 274393.44
Easting 578104.28