



A000651555

OFFICE OF THE COUNTY RECORDER
CASS COUNTY, MINNESOTA
CERTIFIED, FILED, AND/OR
RECORDED ON

7/18/2019 10:25:29 AM

AS DOC #: A000651555

PAGES: 2

REC FEES: 0.00

KATHRYN M. NORBY
CASS COUNTY RECORDER

BY SF _____ Dep TX#: 154998

Twp 141 Rge 28 Index No. P.0-17.0

CERTIFICATE OF LOCATION OF GOVERNMENT CORNER

East Quarter of Section 22, Township 141 N., Range 28 W., 5th P.M.

State of Minnesota, County of Cass

At the corner location shown on the sketch:

On 12 July 2019 found _____ a 1 inch iron post, no cap, top bent.

left monument as found lowered monument removed monument (explain)

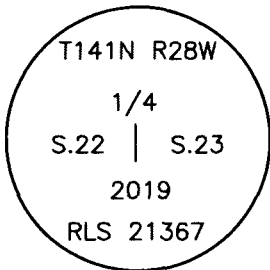
On 12 July 2019 placed _____ a 1 inch x 32 inch aluminum tube with aluminum cap,
down 0.4 foot, 17 feet± South of centerline, County Road #126

Monument

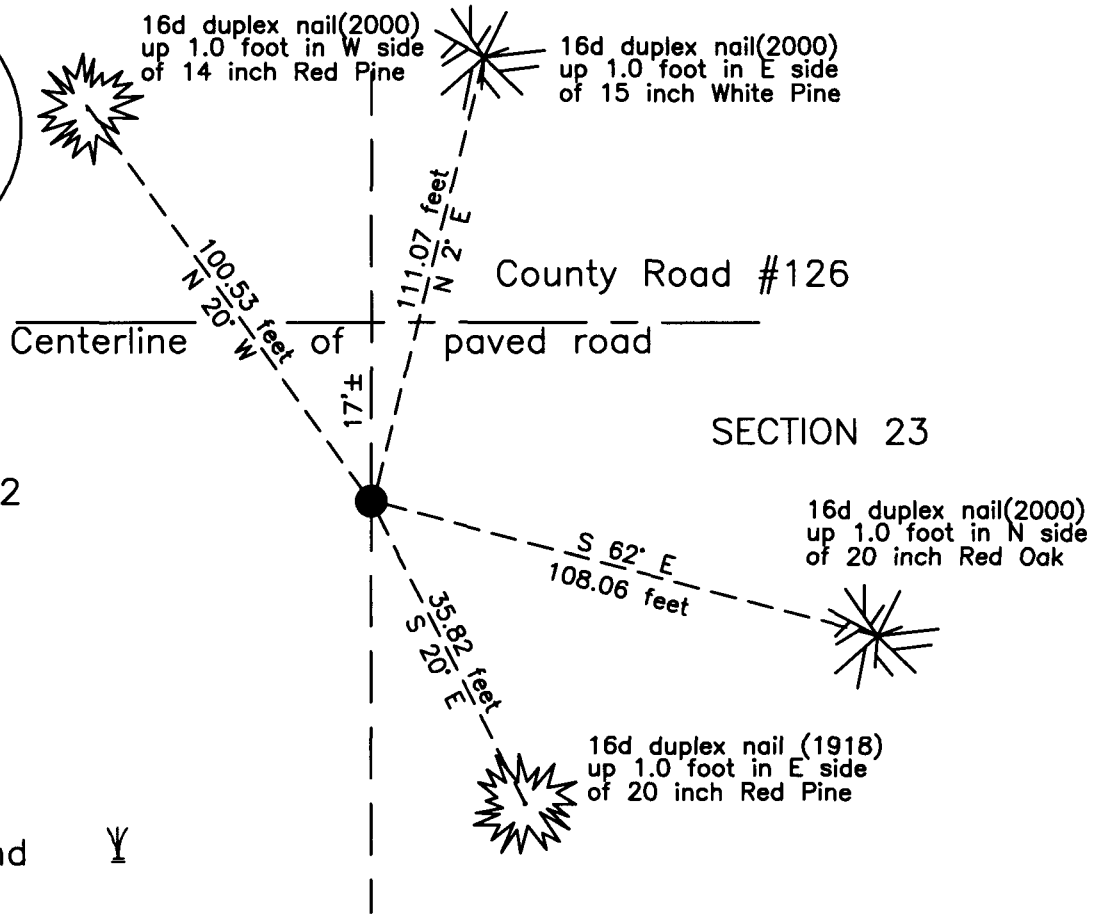
SKETCH OF REFERENCE TIES

Wooded

NOT TO SCALE



is marked



SECTION 22

SECTION 23

NOTE:

All bearings are true

Statement of evidence relative to this corner location is on the back of this page.

I hereby certify that this survey, plan or report was prepared by me or under my direct supervision and that I am a duly Licensed Land Surveyor under the laws of the State of Minnesota.

Terry L. Freeman, Cass County Surveyor

Date 7/17/19 MN License No. 21367



Index No. P.0-17.0

Statement of Evidence

East Quarter corner of Section 22, Township 141 North, Range 28 West, 5th Principal Meridian.

- Jan. 1874 P.H. Conger, General Land Office (GLO) Deputy Surveyor, notes of the subdivision of Township 141 North, Range 28 West, set a post in Tamarac bog for the original corner and stated "no trees."
- Sept. 1918 E.G. Harrington, U.S. Cadastral Engineer, GLO Dependent Resurvey, notes page 35, reestablished this corner at the proportionate position and set a 1 inch by 36 inch iron pipe with a marked brass cap, up 10 inches. The following accessories were noted:

10" N. Pine	S 22 1/4° E	55 links (36.30 feet)	6" Tamarack	S 33 1/2° W	152 links (100.32 feet)
-------------	-------------	-----------------------	-------------	-------------	-------------------------

 The above record is on file with the Minnesota Historical Society in St. Paul, Minnesota, copies are filed with the Cass County Highway Department, Surveyor's Office (CCHD/SO).
- March 1980 R.A. Mustonen, LS 11946, Certificate of Section breakdown, subdivision of the southwest quarter, copy on file in the CCHD/SO, indicates GLO Monument found at the subject corner.
- May 1986 R.A. Mustonen, LS 11946, Certificate of Survey, copy on file in the CCHD/SO, indicates General Land Office Monument found at the subject corner.
- Aug. 1986 R.A. Mustonen, LS 11946, Certificate of Survey, copy on file in the CCHD/SO, indicates General Land Office Monument found at the subject corner.
- Feb. 1987 Cass County Highway Department (CCHD), County Project 97-1, Corner Location notes and Plan sheet 9, on file in the CCHD, indicates Iron Pipe 5.3 meters (17.4 feet) Rt. at station 1+040.
- Jan. 1998 R.A. Mustonen, LS 11946, Certificate of Survey for Magnus, copy on file in the CCHD/SO, indicates a position for the subject corner.
- June 2000 B. Hippen and C. Loe, technicians, records of the CCHD/SO, reset GLO brass cap monument, removed due to County Road #126 construction, down 0.2 foot, 17.5 feet south of centerline. Position reestablished from R.A. Mustonen information and witnessed as follows:

20" Red Pine(1918)	S 20° E	35.82 feet	14" Red Oak	N 2° E	111.07 feet
18" Red Oak	S 62° E	108.06 feet	13" Red Pine	N 20° W	100.53 feet
- Oct. 2000 T.L. Freeman, LS 21367, Certificate of Survey for Steffen, on file in the Northern Engineering & Consulting, Inc, Walker Office, file 002165 and copy on file in the CCHD/SO, indicates GLO Monument found.
- May 2002 T.L. Freeman, LS 21367, Certificate of Survey for Lehmann, on file in the Northern Engineering & Consulting, Inc, Walker Office, copy on file in the CCHD/SO, indicates GLO brass cap Monument found.
- July 2011 B.W. Skipton, LS 17768, Certificate of Survey for Segler, copy on file in the CCHD/SO, indicates a found survey monument at the subject corner.
- July 2019 B. Hippen, technician, records of the CCHD/SO, found the GLO Monument, cap gone, top bent, replace with aluminum Cass County monument, down 0.4 foot, 17 feet, more or less, south of centerline County Road #126, place GLO pipe adjacent on the south side of aluminum monument and witnessed as follows:

20" Red Pine(1918)	S 20° E	35.82 feet	14" Red Oak(2000)	N 2° E	111.07 feet
18" Red Oak(2000)	S 62° E	108.06 feet	13" Red Pine(2000)	N 20° W	100.53 feet

The monument ,recovered and established references for the position are shown on the face of this document.

Analysis of the recovered record data, field evidence and survey measurements, indicates that the GLO monument reset by CCHD/SO in 2000 is the accepted location of this corner.

County Coordinates (Cass County North)

Northing 177214.90

Easting 502961.50