



A000651333

OFFICE OF THE COUNTY RECORDER
CASS COUNTY, MINNESOTA
CERTIFIED, FILED, AND/OR
RECORDED ON

7/11/2019 10:59:05 AM

AS DOC #: A000651333

PAGES: 2

REC FEES: 0.00

KATHRYN M. NORBY
CASS COUNTY RECORDER

BY SF _____ Dep TX#: 154805

Page 1 of 2
A000651333

Twp 141 Rge 28 Index No. N.0-16.2

CERTIFICATE OF LOCATION OF GOVERNMENT CORNER

Meander corner #13 of Section 22, Township 141 N., Range 28 W., 5th P.M.
State of Minnesota, County of Cass

At the corner location shown on the sketch:

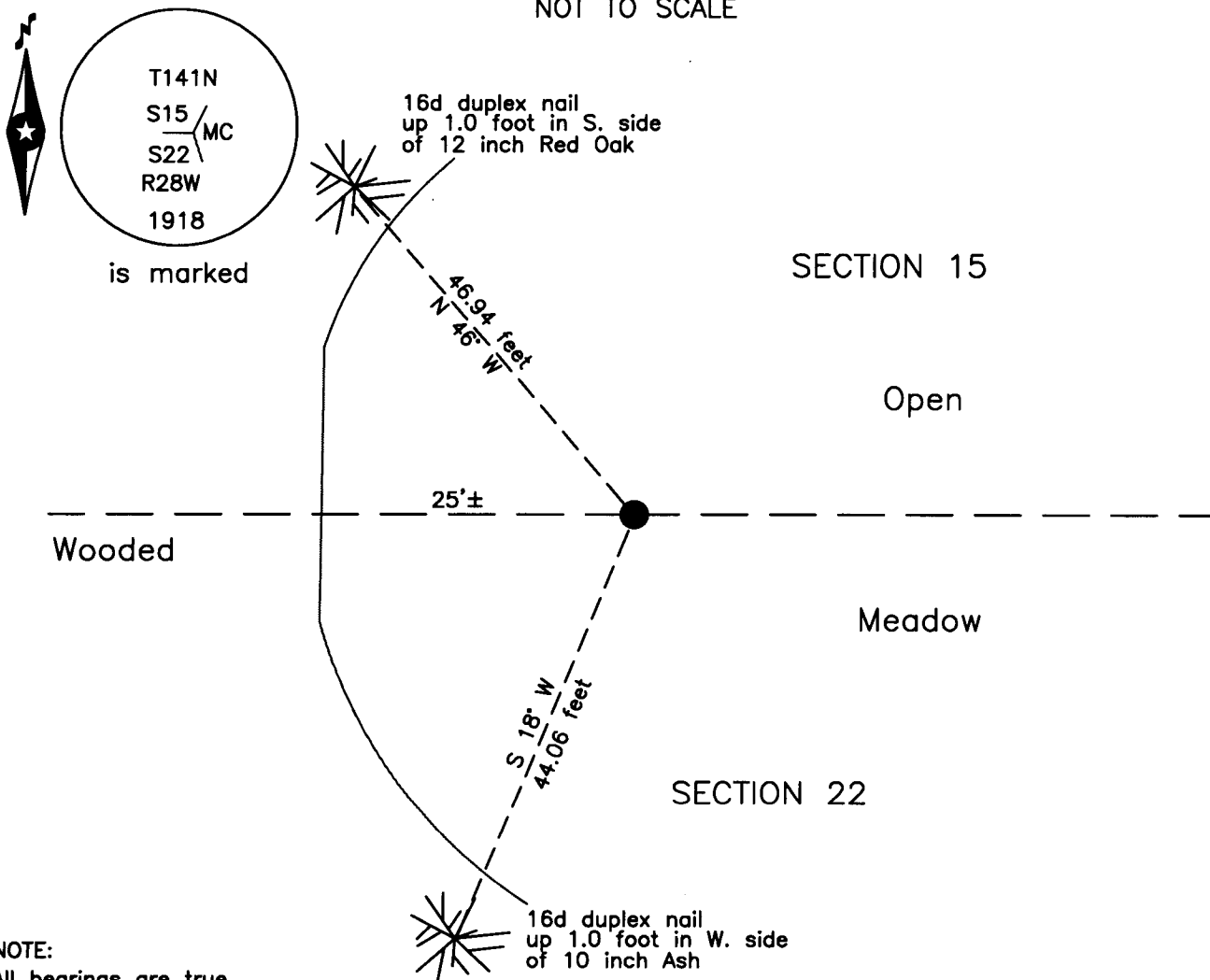
On 28 June 2019 found a 1 inch outside diameter iron pipe with GLO brass cap,
up 1.2 feet, in meadow, 25 feet±, east of tree line.

left monument as found lowered monument removed monument (explain)

On _____ placed _____

Monument

SKETCH OF REFERENCE TIES
NOT TO SCALE



NOTE:
All bearings are true

Statement of evidence relative to this corner location is on the back of this page.

I hereby certify that this survey, plan or report was prepared by me or under my direct supervision and that I am a duly Licensed Land Surveyor under the laws of the State of Minnesota.

Terry L. Freeman, Cass County Surveyor
Date 7/10/19 MN License No. 21367



Index No. N.0-16.2

Statement of Evidence

Meander corner #13 of Sections 15 and 22, Township 141 North, Range 28 West, 5th Principal Meridian.

Jan. P.H. Conger, General Land Office (GLO) Deputy Surveyor, notes of the subdivision of Township 141 North,
1874 Range 28 West, set a post for the original corner and referenced it as follows:
10" Oak N 65° W 73 links (48.18 feet)

Sept. E.G. Harrington, U.S. Cadastral Engineer, GLO Dependent Resurvey, notes page 70, established the proportional
1918 position for this corner, unable to find any evidence of original post or bearing trees he set a 1 inch by 36 inch iron
pipe with a marked brass cap, up 10 inches. The following accessories were noted:
10" Poplar S 31 1/4° W 105 links (69.30 feet) 10" Poplar N 84 1/2° W 91 links (60.06 feet)
The above record is on file with the Minnesota Historical Society in St. Paul, Minnesota, copies are filed with the
Cass County Highway Department, Surveyor's Office (CCHD/SO).

Aug. W.J. Spain, LS 2003, Spain Book 1949, page 104 and 105, on file at the CCHD/SO, states locate M.C. USGLO
1952 and run west, fail to find 1/16 corner.

Sept. G.G. Holmstrom, LS 1861, plat of MAPLE LAKE GROVE, on file with the Cass County Recorder (CCRO) as
1958 Document No. 160016, shows the U.S. Meander Corner in place.

June B. Hippen, technician, records of the CCHD/SO, found the GLO Monument, up 1.2 feet, in good condition, 25
2019 feet, more or less, east of the west edge of an open meadow and witnessed as follows:
12" Red Oak N 46° W 46.94 feet 10" Ash S 18° W 44.06 feet

The monument, recovered and established references for the position are shown on the face of this document.

Analysis of the recovered record data, field evidence and survey measurements, indicates that the monument recovered by the CCHD/SO in 2019 is the accepted location of this corner.

County Coordinates (Cass County North)

Northing 179908.00

Easting 502111.58