



A000650932

OFFICE OF THE COUNTY RECORDER
CASS COUNTY, MINNESOTA
CERTIFIED, FILED, AND/OR
RECORDED ON

6/27/2019 10:32:56 AM

AS DOC #: A000650932

PAGES: 2

REC FEES: 0.00

KATHRYN M. NORBY
CASS COUNTY RECORDER

BY NG Dep TX#: 154500

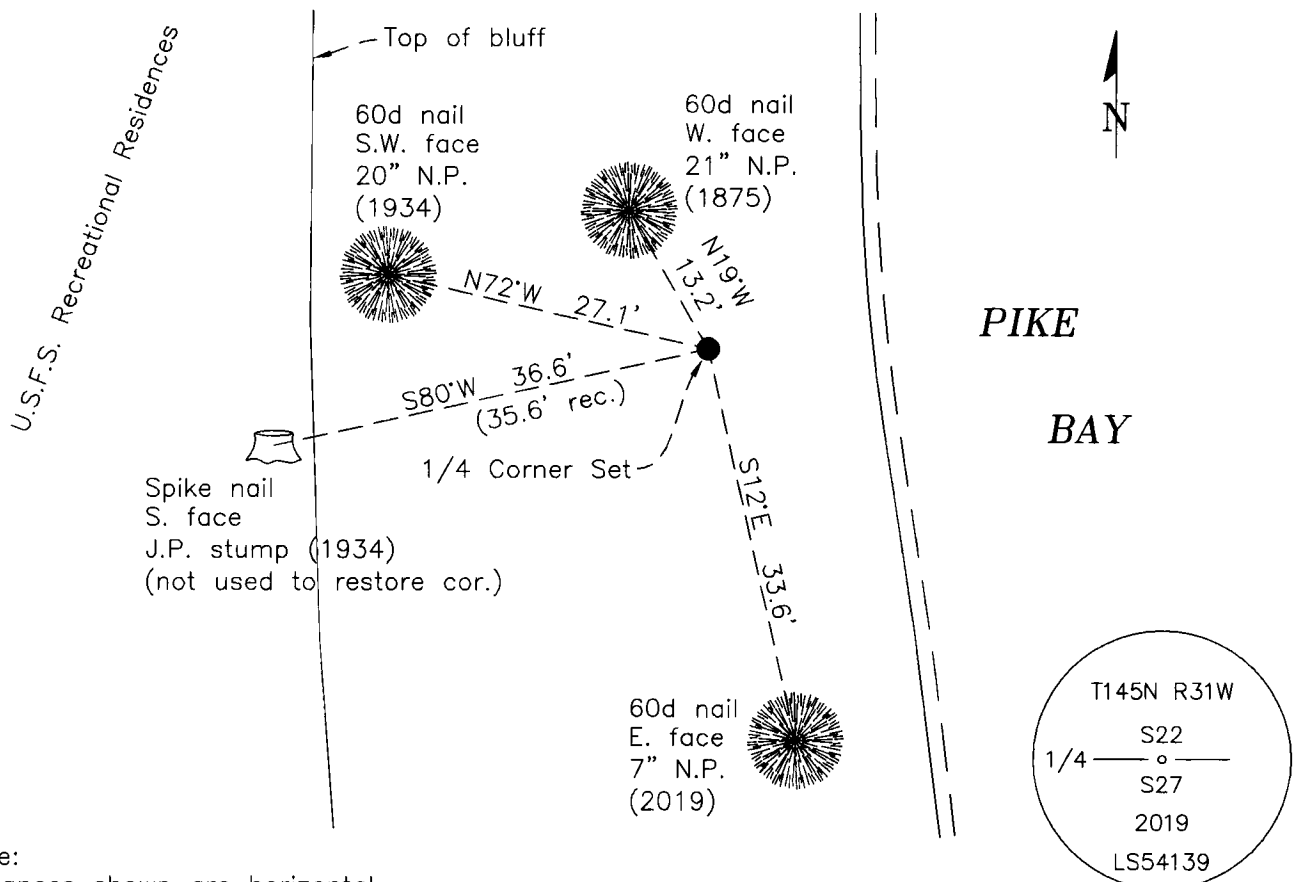
CERTIFICATE OF LOCATION OF GOVERNMENT CORNER

North 1/4 Corner of Section 27, Township 145 N, Range 31 W, 5th P.M.
County of Cass, State of Minnesota

At the corner location shown on the sketch :

- On _____ found _____
- left monument as found lowered monument removed monument (explain)
- On April 23, 2019 set 3/4" x 48" aluminum rod with 3 1/4" aluminum cap & magnet, stamped as shown, flush with ground level on slope toward Pike Bay.

SKETCH OF REFERENCE TIES (NOT TO SCALE)



Note:
Distances shown are horizontal
Bearings shown are geodetic

Cap Stamping Detail

Statement of evidence relative to this corner location is on the back of this page

I hereby certify that this survey, plan, or report was prepared by me or under my direct supervision and that I am a duly Licensed Land Surveyor under the laws of the state of Minnesota.

Aaron J. Skattum
MN License No. 54139

5/30/2019
Date

Cass County Coordinates
(North Zone, 2011 Adj.)
N: 300,287.667
E: 405,697.689

GCDB ID No. 440300
Corner Index No. R.0-15.0



Corner Index No. R.0-15.0

STATEMENT OF EVIDENCE

North 1/4 Corner of Sec. 27, T.145N., R.31W., 5th P.M., Cass County, MN

1875 B.C. Baldwin, U.S. General Land Office, originally established this corner while surveying the subdivision lines of this township, and set wood post to mark the corner position with the following witnesses:

6" Norway Pine	N19°W	13.2'
16" Norway Pine	S31°W	4.6'

1934 J.A. Gjelhaug, C.C.C. engineer (U.S.F.S. Form 874-9, and C.C.C. Book 110, Page 70, Chippewa N.F. records) found original oak post under SW bearing tree which had fallen over post. Set new oak post 3"x3"x48" and made the following ties:

10" Norway Pine	N19°W	13.2'	1875 BT, standing live
18" Norway Pine	S31°W	4.6'	1875 BT, fallen down
10" Norway Pine	N72°W	27.1'	new BT
6" Jack Pine	S80°W	35.6'	new BT

1973 C. Krause, U.S. Forest Service, (Corner Book 1, Page 23, Chippewa N.F. records) found Gjelhaug's oak post and noted the following bearing objects:

18" Norway Pine	N19°W	13.2'	1875 BT, with old FSLP and scribe closed
18" Norway Pine	S31°W	4.6'	1875 BT, fallen down & rotting
17" Norway Pine	N72°W	27.1'	1934 BT, scribe closed
13" Jack Pine	S80°W	35.6'	1934 BT, scribe visible

NE corner of Byer's summer home bears S12°W, 80'±

2019 A. Skattum, U.S. Forest Service, (per Land Line Book 30, page 65) found no evidence of a corner monument, but was able to find several bearing trees that were used to re-establish corner position, and set monument as shown on the face of this document. The following ties were made:

21" Norway Pine	N19°W	13.2'	1875 BT, live, scribe closed
18" Norway Pine	S31°W	4.6'	1875 BT, no evidence found
20" Norway Pine	N72°W	27.1'	1934 BT, live, scribe closed
13" Jack Pine	S80°W	35.6'	1934 BT, stump only, with spike in base
7" Norway Pine	S12°E	33.6'	new BT