



A000650930

OFFICE OF THE COUNTY RECORDER  
CASS COUNTY, MINNESOTA  
CERTIFIED, FILED, AND/OR  
RECORDED ON

6/27/2019 10:32:54 AM

AS DOC #: A000650930

PAGES: 2

REC FEES: 0.00

KATHRYN M. NORBY  
CASS COUNTY RECORDER

BY NG Dep TX#: 154500

Page 1 of 2  
A000650930

Twp 143 Rge 29 Index No. V.0-23.0

### CERTIFICATE OF LOCATION OF GOVERNMENT CORNER

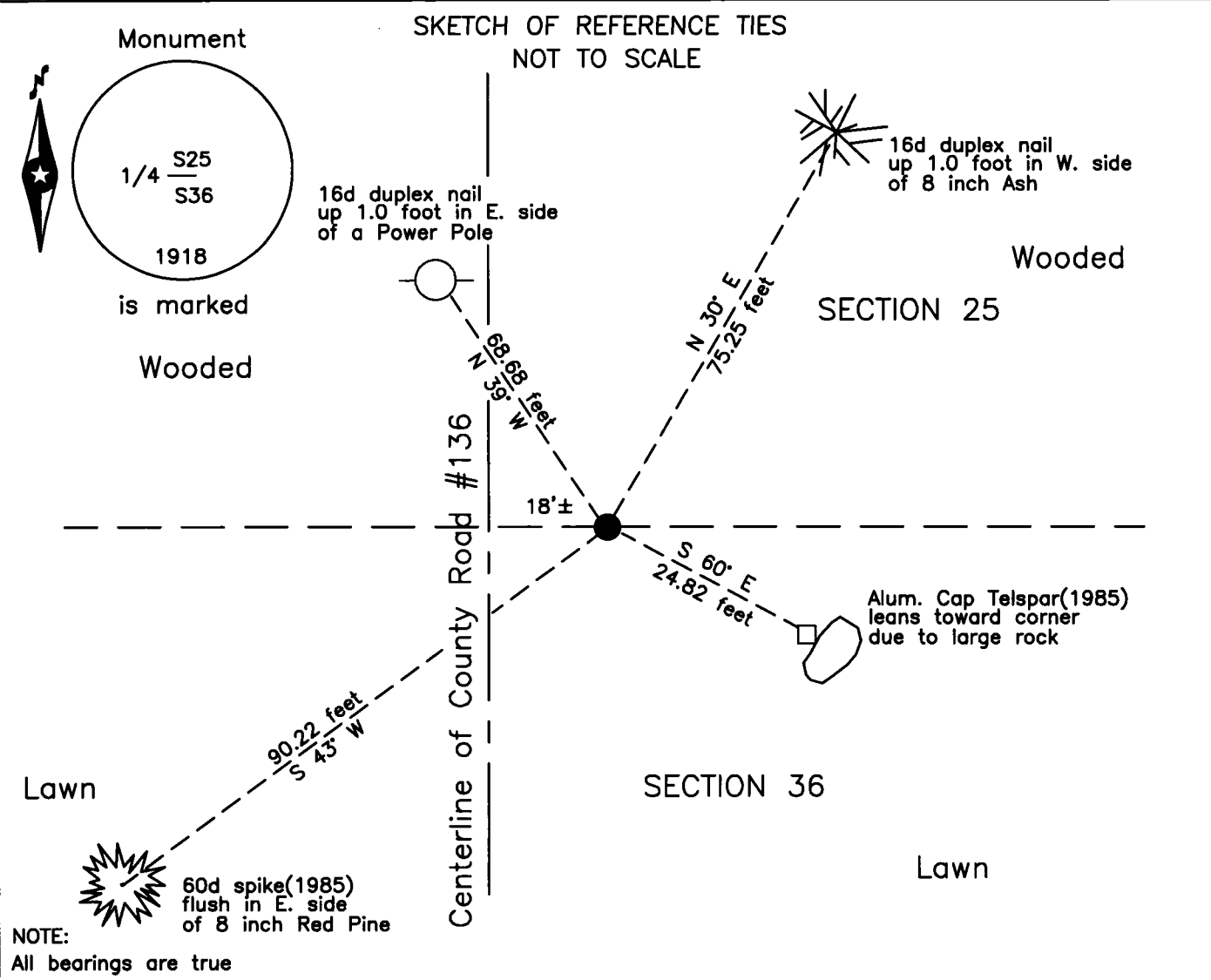
North Quarter corner of Section 36, Township 143 N., Range 29 W., 5th P.M.  
State of Minnesota, County of Cass

At the corner location shown on the sketch:

On 13 June 2019 found a 2 inch outside diameter iron pipe with GLO brass cap,  
down 0.2 foot, 18 feet±, east of centerline County Road #136.

left monument as found     lowered monument     removed monument (explain)

On \_\_\_\_\_ placed \_\_\_\_\_



Statement of evidence relative to this corner location is on the back of this page.

I hereby certify that this survey, plan or report was prepared by me or under my direct supervision and that I am a duly Licensed Land Surveyor under the laws of the State of Minnesota.

Terry L. Freeman, Cass County Surveyor  
Date 6/26/19 MN License No. 21367

Statement of Evidence

**North Quarter corner Section 36, Township 139 North, Range 26 West, 5th Principal Meridian.**

Dec. 1863 Johnson and Thornton, General Land Office (GLO) Deputy Surveyors, notes of the subdivision of Township 139 North, Range 26 West, set a post for the original corner and referenced as follows:  
6" N. Pine S 5° E 11 links (7.26 feet) 6" N. Pine N 25° E 15 links (9.90 feet)  
Said records are on file at the Minnesota Historical Society, St. Paul, Minnesota, copies are filed with the Cass County Highway Department, Surveyor's Office (CCHD/SO).

April 1908 J.W. Curo, LS 1428, Cass County Surveyor, Survey Record #173, Book A, page 390 and Curo Book 95, pages 12 and 30, on file in the CCHD/SO, states "we set the live ¼ cor. from one NP, N 25° E. The other B.T. is gone tho there is a root which checks out for measurement tho it is a foot too far west."

May 1927 J.P. Larsen, LS 143, Plat of TINGDALE BROS.' ROOSEVELT TRAILS, on file in the Cass County Recorders Office(CCRO), as Document Number 87084, indicates Concrete Mon. at the subject corner.

May 2019 B. Hippen, technician, records of the CCHD/SO, found a 1.5 inch outside diameter iron pipe in concrete, down 0.9 foot, 2 feet, more or less, north of centerline of trail and the following witnesses:  
18" White Pine N 55° E 46.52 feet 6" White Pine N 44° W 28.99 feet  
6" Norway Pine S 7° E 57.07 feet

The recovered and established witnesses for this corner position are shown on the face of this document.

**Analysis of the recovered record data, field evidence and survey measurements, indicates that the monument recovered in 2019 by the CCHD/SO, is the correct perpetuation of this corner.**

**County Coordinates (Cass County North)**

**Northing 105291.65**

**Easting 576087.92**