



A000650929

OFFICE OF THE COUNTY RECORDER  
CASS COUNTY, MINNESOTA  
CERTIFIED, FILED, AND/OR  
RECORDED ON

6/27/2019 10:32:53 AM

AS DOC #: A000650929

PAGES: 2

REC FEES: 0.00

KATHRYN M. NORBY  
CASS COUNTY RECORDER

BY NG Dep TX#: 154500

Page 1 of 2 A000650929

Twp 139 Rge 26 Index No. V.0-21.0

### CERTIFICATE OF LOCATION OF GOVERNMENT CORNER

Northeast corner of Section 35, Township 139 N., Range 286W., 5th P.M.  
State of Minnesota, County of Cass 26

At the corner location shown on the sketch:

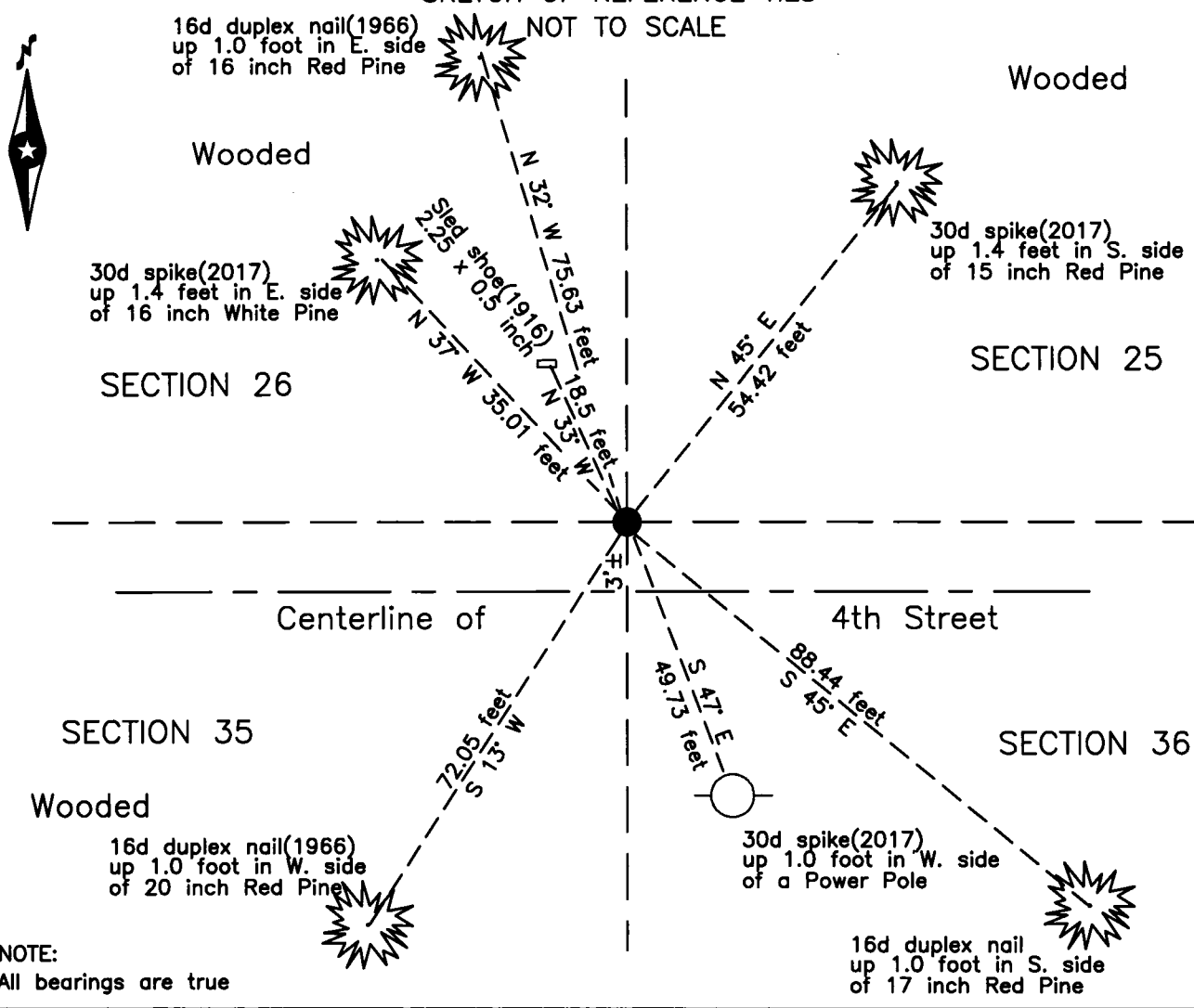
On 2 May 2019 found a 2 inch outside diameter iron pipe, down 0.8 foot,  
3 feet ±, north of centerline 4th Street.

left monument as found     lowered monument     removed monument (explain)

On \_\_\_\_\_ placed \_\_\_\_\_

#### SKETCH OF REFERENCE TIES

NOT TO SCALE



NOTE:  
All bearings are true

Statement of evidence relative to this corner location is on the back of this page.

I hereby certify that this survey, plan or report was prepared by me or under my direct supervision and that I am a duly Licensed Land Surveyor under the laws of the State of Minnesota.

Terry L. Freeman, Cass County Surveyor  
Date 6/26/19 MN License No. 21367

Statement of Evidence

**Northeast corner Section 35, Township 139 North, Range 26 West, 5th Principal Meridian.**

- Dec. 1863 Johnson and Thornton, General Land Office (GLO) Deputy Surveyors, notes of the subdivision of Township 139 North, Range 26 West, set a post for the original corner and referenced as follows:  
 5" N. Pine N 55° E 39 links (25.74 feet) 12" N. Pine S 35° E 13 links ( 8.58 feet)  
 8" N. Pine N 35° W 28 links (18.48 feet) 11" N. Pine S 55° W 33 links (21.78 feet)  
 Said records are on file at the Minnesota Historical Society, St. Paul, Minnesota, copies are filed with the Cass County Highway Department, Surveyor's Office (CCHD/SO).
- April 1908 J.W. Curo, LS 1428, Cass County Surveyor, Survey Record #173, Book A, page 390 and Curo Book 95, pages 12 and 30, on file in the CCHD/SO, states " we set this corner from 3 B.T. stumps standing SW – NW and SE but the NE B.T. had been grubbed out for a logging road. The measurement from the heart of the 3 sawed off stumps was perfect so I did not take the courses, we drove our stake thro point of old Gov't stake."
- Oct. 1916 E.B. Horst, LS 376, Survey Record #283, Book B, page 193, on file in the CCHD/SO, states "set by Curo set's W. 66.90 ft in center of a road, where I find a cast sled shoe driven at the corner, we also find SW and NW bearing tree stumps. The SE was pulled in building the road. I break the sleigh shoe and drive one piece at each of the U.S. bearing trees and drive a 2 x 48 inch boiler tube for the true sec. cor. There are no trees near for bearings."
- April 1922 E.B. Horst, LS 376, Curo Book 103, page 2, on file in the CCHD/SO, a sketch of Survey Record #283 is copied in notes of a survey of Lots 2-5 of Sec. 26.
- April 1927 J.M. Greene, Curo Book 103, page 59-62, on file in the CCHD/SO, in notes of a survey of Lot 7 of Sec. 26 indicates the subject corner.
- May 1927 J.P. Larsen, LS 143, Plat of TINGDALE BROS.' ROOSEVELT TRAILS, on file in the Cass County Recorders Office(CCRO), as Document Number 87084, indicates Iron Mon. at the subject corner.
- May 1928 J.M. Greene, Curo Book 103, page 91-92, on file in the CCHD/SO, in notes of a survey in Section 26 indicates the subject corner.
- Nov. 1931 J.M. Greene, Curo Book 287, page 2-5, on file in the CCHD/SO, in notes of a survey in Section 35 indicates the subject corner.
- Dec. 1931 H.D. Keath, LS 1601, Plat of Tingdale Bro'. Lake Lawrance Point, on file in the CCRO as Document Number 95508, indicates I.M. at the subject corner.
- 1941 Civilian Conservation Corps (CCC), Washburn Lake Camp, Emily Game Refuge Book, page 3, on file in the Minnesota Department of Natural Resources(DNR), Outing Office, indicates Start South from corner. Fnd concrete monument 1326' South.
- July 1966 R.F. Schneider, LS 5740, Survey Record Book D, page 460, on file in the CCHD/SO, indicates a 2 inch I. Pipe at the southeast corner of Sec. 26-139-26 and new witnesses as follows:  
 10" Nor. Pine S 13° W 71.65 feet 10" Nor. Pine S 45° E 75.3 feet  
 8" J. Pine N 33 1/2° E 94.5 feet 10" Nor. Pine N 32° W 75.15 feet
- May 1980 F.C. Jackson, LS 3600, Certificate of Survey for Bogucki, copy on file in the CCHD/SO, indicates an iron found at the subject corner.
- Jan. 2001 D.E. Sigety, LS 23945, Crow Wing County Surveyor, Sketch of survey records, copy on file in the CCHD/SO, indicates a position for the subject corner.
- June 2017 M.R. Kohout, LS 17774, recovered the subject corner, 3 feet, more or less, north of centerline of 4<sup>th</sup> Street and witnessed as follows:  
 15" N. Pine N 45° E 54.42 feet Power Pole S 20° E 24.39 feet  
 16" W. Pine N 37° W 35.01 feet
- May 2019 B. Hippen, technician, records of the CCHD/SO, found a 2 inch outside iron pipe, down 0.8 foot, 3 feet, more or less, north of centerline of 4<sup>th</sup> Street and the following witnesses:  
 Sleigh shoe(1916) N 33° W 18.5 feet 20" Norway Pine(1966) S 13° W 72.05 feet  
 16" Norway Pine(1966) N 32° W 75.63 feet 15" Norway Pine(2017) N 45° E 54.42 feet  
 16" White Pine(2017) N 37° W 35.01 feet Power Pole(2017) S 20° E 24.39 feet  
 17" Norway Pine S 45° E 88.44 feet

The recovered and established witnesses for this corner position are shown on the face of this document.

**Analysis of the recovered record data, field evidence and survey measurements, indicates that the monument recovered in 2019 by the CCHD/SO, is the correct perpetuation of this corner.**

**County Coordinates (Cass County North)**  
**Northing 105323.49**  
**Easting 573538.11**