



A000647277

OFFICE OF THE COUNTY RECORDER  
CASS COUNTY, MINNESOTA  
CERTIFIED, FILED, AND/OR  
RECORDED ON

1/10/2019 10:27:11 AM

AS DOC #: A000647277

PAGES: 2

REC FEES: 0.00

KATHRYN M. NORBY  
CASS COUNTY RECORDER

BY SF \_\_\_\_\_ Dep TX#: 151453

Page 1 of 2 A000647277

Twp 139 Rge 28 Index No. J.0-13.0

# CERTIFICATE OF LOCATION OF GOVERNMENT CORNER

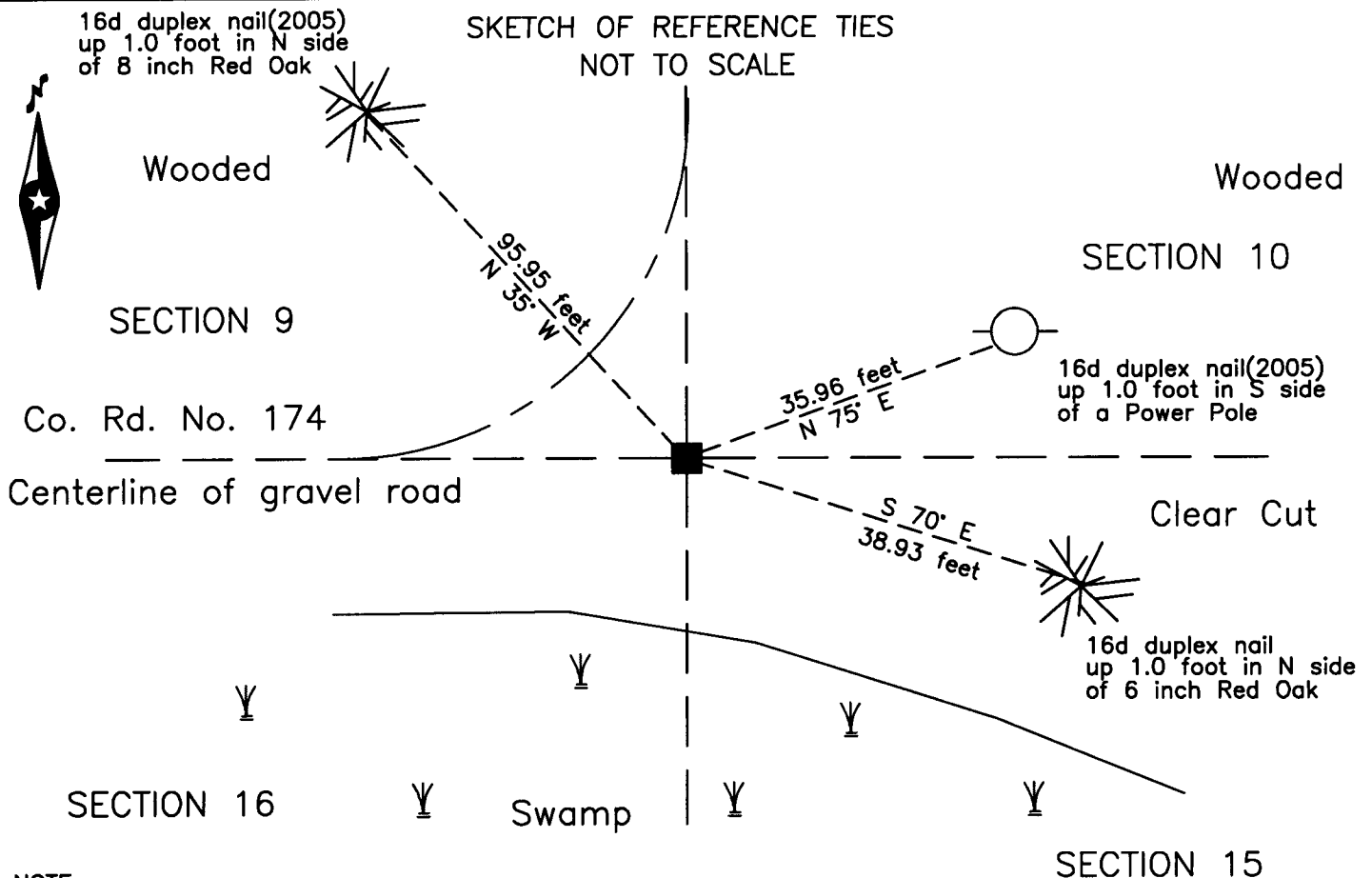
Northeast corner of Section 16, Township 139 N., Range 28 W., 5th P.M.  
State of Minnesota, County of Cass

At the corner location shown on the sketch:

On 18 May 2018 found an 8 by 8 inch square concrete monument, with broken top, down 1.0 foot, near the P.I. of County Road Number 174.

left monument as found     lowered monument     removed monument (explain)

On 18 May 2018 placed a Rail Road spike on the south side of the concrete monument to aid in future recovery of the corner.



NOTE:  
All bearings are true

Statement of evidence relative to this corner location is on the back of this page.

I hereby certify that this survey, plan or report was prepared by me or under my direct supervision and that I am a duly Licensed Land Surveyor under the laws of the State of Minnesota.

Terry L. Freeman, Cass County Surveyor  
Date 1/9/19 MN License No. 21367

**Index No. J.0-13.0**Statement of Evidence**Northeast corner of Section 16, Township 139 North, Range 28 West, 5th Principal Meridian.**

- April 1864 Johnson and Thornton, General Land Office(GLO) Deputy Surveyors, notes of the subdivision of Township 139 North, Range 28 West, set a post for the original corner and referenced it as follows:  
 20" W. Pine N 85° E 40 links (26.40 feet) 18" Y. Pine N 75° W 10 links (6.60 feet)  
 28" W. Pine S 70° E 47 links (31.02 feet)  
 The above record is on file with the Minnesota Historical Society in St. Paul, Minnesota, copies are filed with the Cass County Highway Department, Surveyor's Office (CCHD/SO).
- June 1911 J.W. Curo, LS 1428, Cass County Surveyor, Survey Record No. 165, Book A, page 365 and Curo Book 73, page 28, on file in the CCHD/SO, states "We find the stumps of all the old bearing trees from which a stake set by Curo stands perfect for position for the corner." Then on June 17 he states "pull up the wood hub ... and put in its place a cement post 8x8x36 inches in size for the true corner."
- Sept. 1919 B.F. Clark, LS 231, Survey Record No. 434, Book C, page 320, on file in the CCHD/SO, states "begin at the established cor. S. 9-10-15-16. A concrete post in the township road".
- Dec. 1921 B.F. Clark, LS 231, County Resurvey, on file in the Cass County Recorders Office, as Document Number 69798 and 69799, indicates Iron Monument.
- 1938 Civilian Conservation Corps(CCC), personnel, Washburn Lake Book 13, page 17, on file in the Minnesota Department of Natural Resources(DNR), Outing Office, state start east from Cor.
- 1982 T.L. Freeman, Cass County Surveyors Office, Cass County Land Corner Record, on file in the CCHD/SO, states found concrete post at P.I. of road N and W, up 0.5' and lists the following witnesses:  
 8" R. Oak N 60° E 30.25 feet 7" R. Oak N 85° E 25.25 feet
- Sept. 2005 B. Hippen, technician and J. Lamon, Forester Cass County Land Department, records of the CCHD/SO, found an 8 x 8 inch concrete monument down 1.0 foot, near the centerline P.I. of County Road Number 174, placed a Rail Road spike on south side and established witnesses as follows:  
 Oak stump(1982) N 52° E 30.21 feet Oak stump(1982) N 80° E 25.60 feet  
 8" R. Oak N 35° W 95.95 feet Power Pole N 75° E 35.96 feet  
 12" R. Oak N 35° E 97.47 feet
- May 2018 B. Hippen, technician, records of the CCHD/SO, found an 8 x 8 inch concrete monument down 1.0 foot, Rail Road spike on south side, near the centerline P.I. of County Road Number 174 and witnesses as follows:  
 Oak stump(2005) N 35° E 97.47 feet 8" R. Oak(2005) N 35° W 95.95 feet  
 Power Pole(2005) N 75° E 35.96 feet 6" R. Oak S 70° E 38.93 feet

The monument, recovered and established references for the position are shown on the face of this document.

**Analysis of the recovered record data, field evidence and survey measurements, indicates that the monument recovered by CCHD/SO in 2005 is the correct perpetuation of this corner.**

**County Coordinates (Cass County North)**

**Northing 121438.59**

**Easting 500098.95**