



A000646710

OFFICE OF THE COUNTY RECORDER  
 CASS COUNTY, MINNESOTA  
 CERTIFIED, FILED, AND/OR  
 RECORDED ON

12/17/2018 10:22:59 AM

AS DOC #: A000646710

PAGES: 2

REC FEES: 0.00

KATHRYN M. NORBY  
 CASS COUNTY RECORDER

BY KF Dep TX#: 151021

## CERTIFICATE OF LOCATION OF GOVERNMENT CORNER

I hereby certify that this survey, plan, or report was prepared by me or under my direct supervision and that I am a duly Licensed Land Surveyor under the laws of the State of Minnesota.

*Patrick A. Trottier*

Patrick A. Trottier

Date: 12-13-2018 License No: 41002

PLS# 41002

Northeast Corner of Section 29, Township 138 N, Range 30 W, 5<sup>th</sup> P.M.

On \_\_\_\_\_ found a \_\_\_\_\_

left monument as found,  lowered monument,  removed monument (explain)

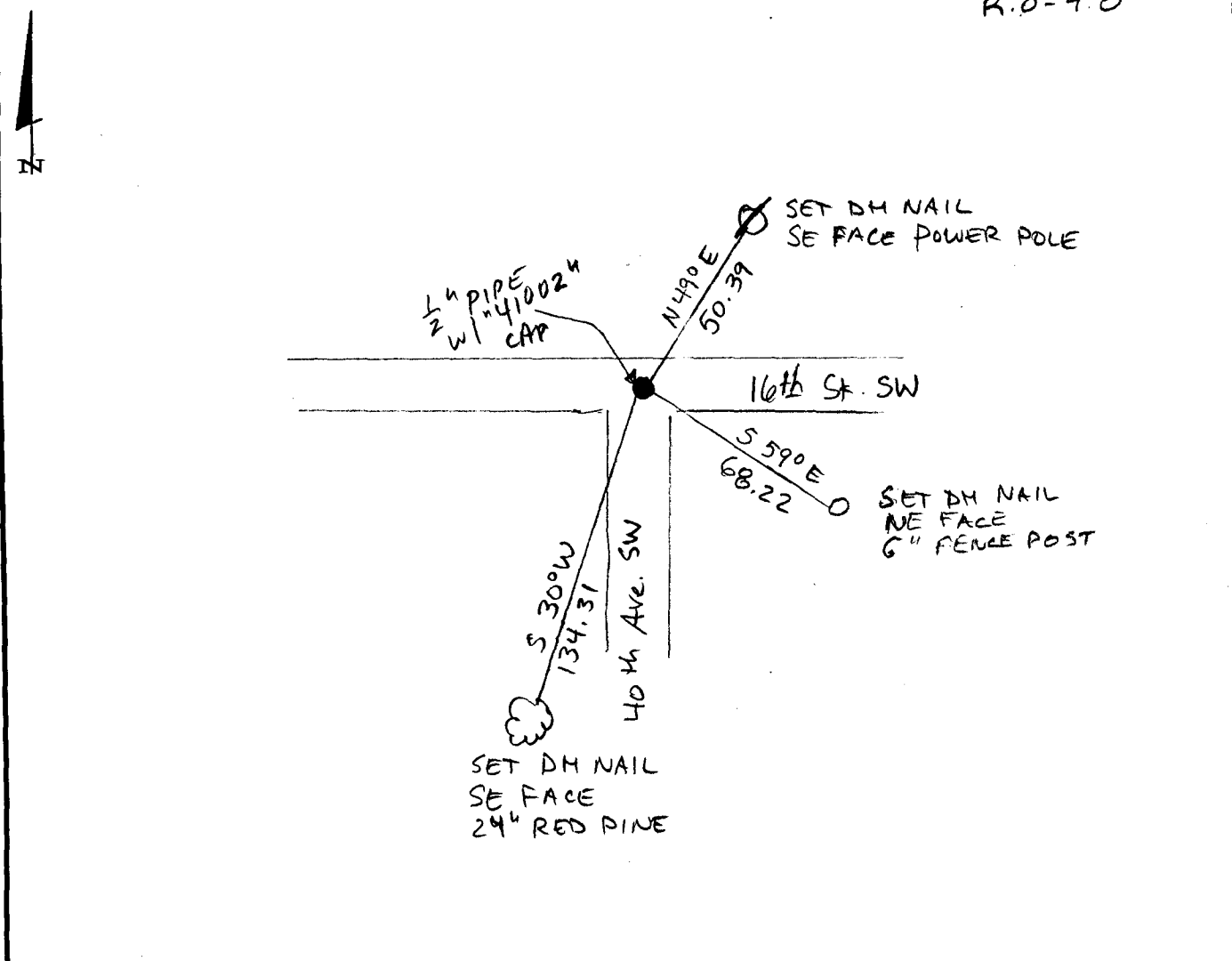
On 12-06-18 placed a 1/2" iron pipe with plastic cap stamped "RLS 41002" on E-E intersection of 16<sup>th</sup> St. SW and 40<sup>th</sup> Ave SW, down 0<sup>o</sup> 51'

### SKETCH OF REFERENCE TIES

Not to Scale

Corner Index:

R.O-9.0



**R.0-9.0****Statement of Evidence****Northeast corner, Section 29, Township 138 North, Range 30  
West, 5<sup>th</sup> Principal Meridian, Cass County, Minnesota**

1865 – Wright and Walker, US Deputy Surveyors originally established this corner position while surveying the interior subdivision lines of Township 138 North, Range 30 West. A wood post was set to mark the corner position with the following witnesses:

5" Tam.	N 70 1/2° E	92 links
6" Tam.	N 87° W	195 links
14" Aspen	S 52° W	176 links
4" Tam.	S 29 1/2° E	324 links

Information on file in the MN Historical Society, St. Paul, MN. Copies on file in the Cass County Highway Department/Surveyors Office (CCHD/SO).

1914 – John Curo, in County Survey Record Book B, p. 30-31 found original stake and the 6" Tam. bearing tree. Set a 2" x 7' galvanized iron pipe with top 2' above swamp with the following witnesses:

7" J. Pine	S 48°47' W	145.90 feet
4" Tam.	N 26°47' W	114.90 feet

Information on file in the CCHD/SO.

1915 – N.D. Gorman, in Curo Book 90, p.11 found galvanized pipe set by Curo.  
Information on file in the CCHD/SO.

1915 – John Curo, in County Survey Record Book B, p. 108-114, also in Curo Book 67, p. 44, found galvanized pipe set by Curo.  
Information on file in the CCHD/SO.

1916 – County Ditch Survey Book 8, Shelf 2 of County Ditch Survey Books p. 45 shows pipe found.  
Information on file in the CCHD/SO.

2006 – Bruce W. Skipton, PLS 17768 shows monument in-place on Certificate of Survey dated June 7, 2006.  
Information on file in the CCHD/SO.

2018 - Patrick Trottier, PLS 41002, finds no evidence at corner. Recreates position shown on Skipton survey by relation to other monuments and finds it to be on centerline intersection of 16th St SW and 40th Ave SW. Accepts this position and places 1/2" x 18" iron pipe with plastic cap stamped "RLS 41002" as the perpetuation of the corner and establishes the witnesses as shown on the face of this drawing.

County Coordinates (Cass County South NAD83/96)

Northing      315625.02

Easting        493257.22