



A000646708

OFFICE OF THE COUNTY RECORDER
CASS COUNTY, MINNESOTA
CERTIFIED, FILED, AND/OR
RECORDED ON

12/17/2018 10:22:57 AM

AS DOC #: A000646708

PAGES: 2

REC FEES: 0.00

KATHRYN M. NORBY
CASS COUNTY RECORDER

BY KF Dep TX#: 151021

CERTIFICATE OF LOCATION OF GOVERNMENT CORNER

I hereby certify that this survey, plan, or report was prepared by me or under my direct supervision and that I am a duly Licensed Land Surveyor under the laws of the State of Minnesota.

Patrick A. Trottier

Patrick A. Trottier

Date: 12-13-2018 License No: 41002

PLS# 41002

East Quarter Corner of Section 20, Township 138 N, Range 30 W, 5th P.M.

On _____ found a _____

left monument as found, lowered monument, removed monument (explain)

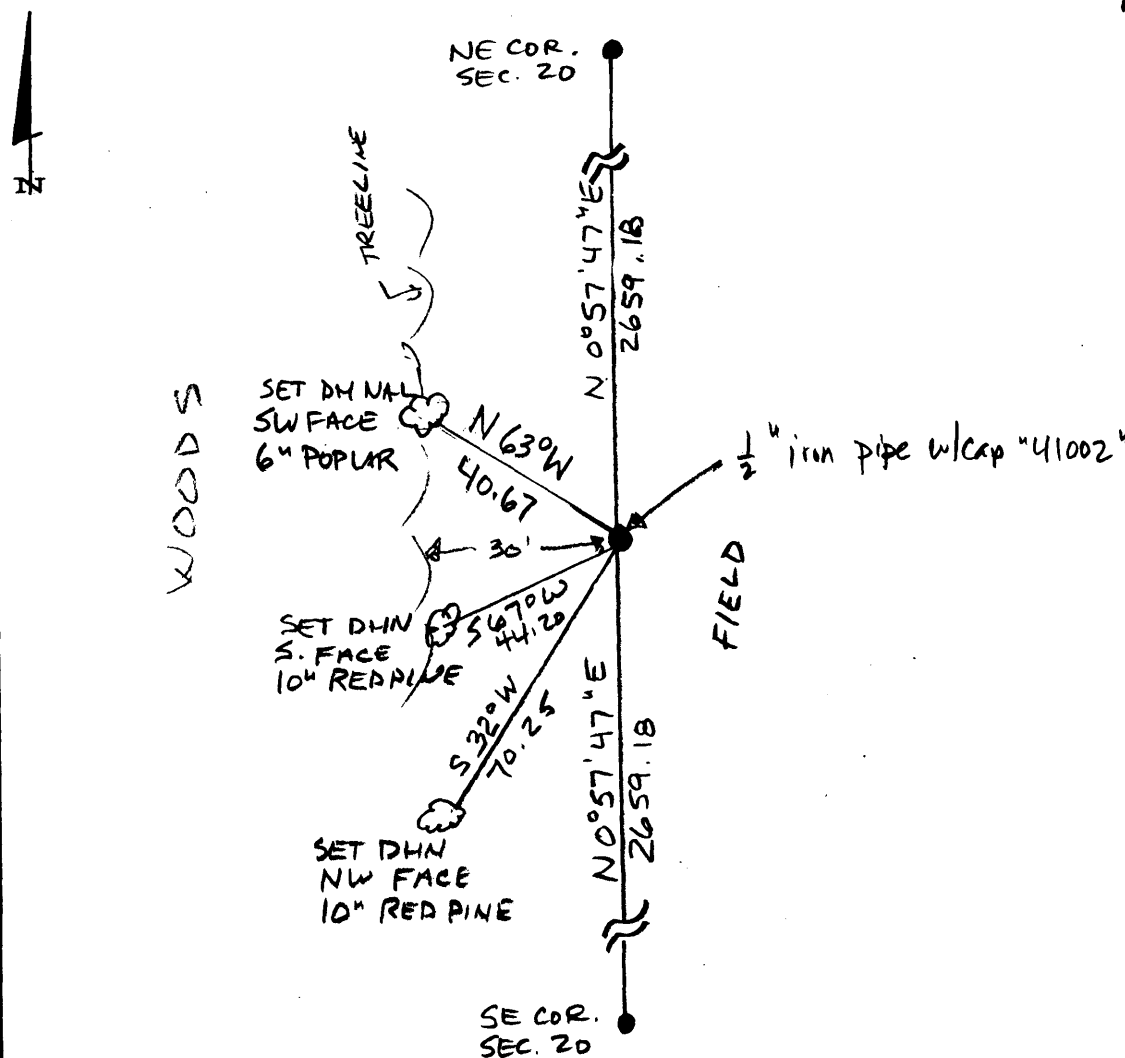
On 12-11-2018 placed a 1/2" x 18" iron pipe with plastic cap stamped "RLS 41002" by single proportion

SKETCH OF REFERENCE TIES

Not to Scale

Corner Index:

P.O.-9.0





P.0-9.0

Statement of Evidence

**East quarter corner, Section 20, Township 138 North, Range 30
West, 5th Principal Meridian, Cass County, Minnesota**

1865 – Wright and Walker, US Deputy Surveyors originally established this corner position while surveying the interior subdivision lines of Township 138 North, Range 30 West. A wood post was set to mark the corner position with the following witnesses:

22" N. Pine N 12° E 19 links

20" N. Pine N 20° W 22 links

Information on file in the MN Historical Society, St. Paul, MN. Copies on file in the Cass County Highway Department/Surveyors Office (CCHD/SO).

2018 – Patrick A. Trottier, RLS 41002 finds no evidence of corner and determines position by single proportion method between found NE and SE corners of Section 20. Sets 1/2" x 18" iron pipe with plastic cap stamped "RLS 41002" as the perpetuation of the corner and establishes the witnesses as shown on the face of this drawing.

County Coordinates (Cass County South NAD83/96)

Northing 318283.82

Easting 493301.91