



A000646706

OFFICE OF THE COUNTY RECORDER
CASS COUNTY, MINNESOTA
CERTIFIED, FILED, AND/OR
RECORDED ON

12/17/2018 10:22:55 AM

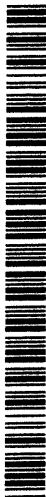
AS DOC #: A000646706

PAGES: 2

REC FEES: 0.00

KATHRYN M. NORBY
CASS COUNTY RECORDER

BY KF Dep TX#: 151021



Page 1 of 2 A000646706

CERTIFICATE OF LOCATION OF GOVERNMENT CORNER

I hereby certify that this survey, plan, or report was prepared by me or under my direct supervision and that I am a duly Licensed Land Surveyor under the laws of the State of Minnesota.

Patrick A. Trottier

Patrick A. Trottier

Date: 12-13-2018 License No: 41002

PLS# 41002

Northeast Corner of Section 20, Township 138N, Range 30W, 5th P.M.

On 12-04-18 found a 2" iron pipe in wetland, 0.5' below ice

left monument as found, lowered monument, removed monument (explain)

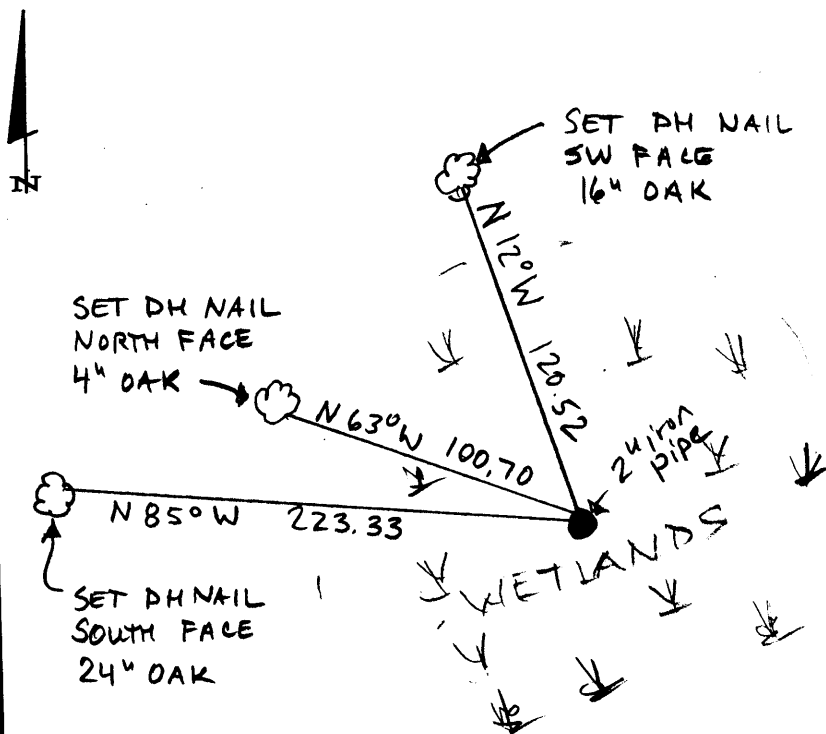
On _____ placed a _____

SKETCH OF REFERENCE TIES

Not to Scale

Corner Index:

N, 0-9.0



Statement of evidence for this corner position is on the back of this page



N.0-9.0

Statement of Evidence

**Northeast corner, Section 20, Township 138 North, Range 30
West, 5th Principal Meridian, Cass County, Minnesota**

1865 – Wright and Walker, US Deputy Surveyors originally established this corner position while surveying the interior subdivision lines of Township 138 North, Range 30 West. A wood post was set to mark the corner position with the following witnesses:

- 20" N. Pine N 10 1/4° E 425 links
- 20" N. Pine N 2° W 479 links
- 24" N. Pine S 87 1/2° W 483 links

Information on file in the MN Historical Society, St. Paul, MN. Copies on file in the Cass County Highway Department/Surveyors Office (CCHD/SO).

2018 – Patrick Trottier finds a 2" iron pipe in a wetland, 0.5' below ice level.

Patrick Trottier PLS #41002, after analysis of record and survey information accepts this monument as the correct perpetuation of the corner and establishes the witnesses as shown on the face of this drawing.

County Coordinates (Cass County Information on file in the CCHD/SO. NAD83/96)

Northing 320942.63
Easting 493346.61