



A000646704

OFFICE OF THE COUNTY RECORDER
CASS COUNTY, MINNESOTA
CERTIFIED, FILED, AND/OR
RECORDED ON

12/17/2018 10:22:53 AM

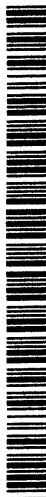
AS DOC #: A000646704

PAGES: 2

REC FEES: 0.00

KATHRYN M. NORBY
CASS COUNTY RECORDER

BY KF Dep TX#: 151021



A000646704

Page 1 of 2

CERTIFICATE OF LOCATION OF GOVERNMENT CORNER

I hereby certify that this survey, plan, or report was prepared by me or under my direct supervision and that I am a duly Licensed Land Surveyor under the laws of the State of Minnesota.

Patrick A. Trottier

Patrick A. Trottier

Date: 12-13-2018 License No: 41002

PLS# 41002

North Quarter Corner of Section 27, Township 139 N, Range 30W, 5th P.M.

■ On 12-10-2018 found a PK nail at P.I. of extension of State Highway 87 center line and 34th Ave NW, flush

left monument as found, lowered monument, removed monument (explain)

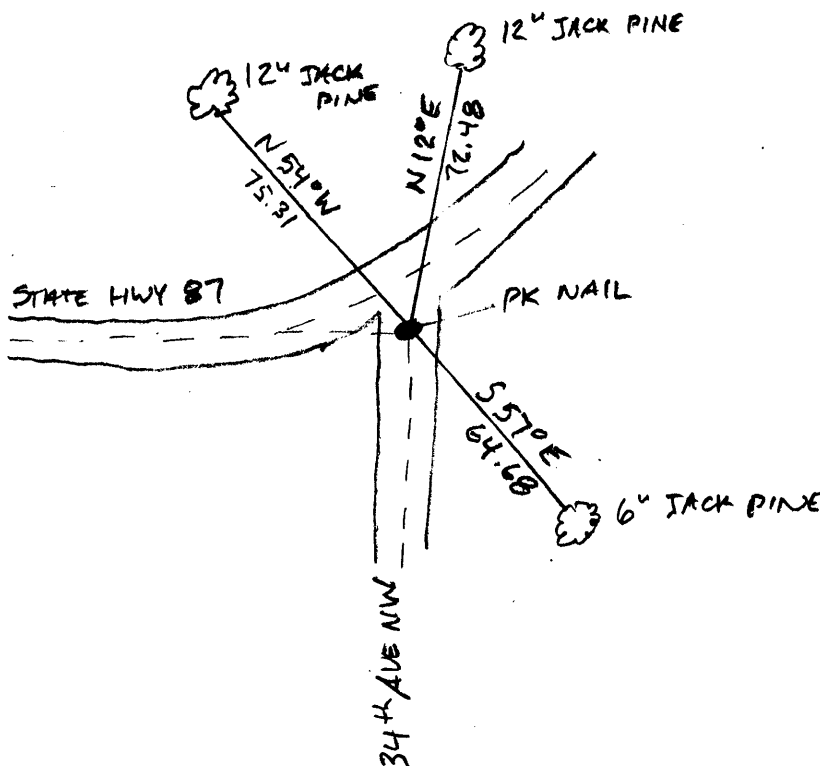
On _____ placed a _____

SKETCH OF REFERENCE TIES

Not to Scale

Corner Index:

R.0-15.A



**R.0-15.0****Statement of Evidence****North quarter corner, Section 27, Township 139 North, Range 30
West, 5th Principal Meridian, Cass County, Minnesota**

1865 – Wright and Walker, US Deputy Surveyors originally established this corner position while surveying the interior subdivision lines of Township 139 North, Range 30 West. A wood post was set to mark the corner position with the following witness:

16" Y. Pine N 28° E 13 links
7" B. Pine S 52° W 18 links

Information on file in the MN Historical Society, St. Paul, MN. Copies on file in the Cass County Highway Department/Surveyors Office (CCHD/SO).

1911 - Harry S. Todd, in County Survey Record Book A, p. 373-377 and Curo Book 98, p. 34 denotes starting here and running survey line to west.

Information on file in the CCHD/SO.

1912 - Harry S. Todd, in Curo Book 73, p. 53 denotes being at corner previously established by Todd and runs a survey line to south.

Information on file in the CCHD/SO.

1920 - George Weetman prepares plat of WOODLAND and denotes monument found.

Information on file in the CCHD/SO.

1927 - A.R. Taubman, Assistant County Engineer set concrete monument 4"x4" top, 6"x6" base, 18" long, 4" below surface of road, evidenced by "reference points previously established" and established the following witnesses:

4" Conc. Mon. S 52°45' E 46.669 feet
4" Conc. Mon. S 37°15' W 46.669 feet

Certificate of Location was prepared but not recorded.

Information on file in the CCHD/SO.

Unknown date - R.F. Schneider found 3/4" iron pipe and established the following witnesses:

6" J. Pine N 06° E 74.85 feet
7" J. Pine S 29° E 63.42 feet

Information on file in the CCHD/SO.

1994 - Terry Freeman, PLS 21367, found corner and established the following witnesses:

12" J. Pine N 12° E 72.48 feet
12" J. Pine N 84° W 50.13 feet
1 3/4" I.P. S 57° E 64.68 feet

Information on file in the CCHD/SO.

2001 – CCHD/SO staff as part of Project #2001.035, found 1" ODIP 2' +/- south of centerline Highway #87 on extension of the centerline of 34th Ave, down 0.4' and established the following witnesses:

10" W. Pine N 27° W 67.82 feet
Elec. Transformer S 40° W 60.55 feet
1 3/4" I.P. S 38° E 47.03 feet

Information on file in the CCHD/SO.

2004 – Terry Freeman, PLS 21367, Certificate of Survey shows PK nail found.

Information on file in the CCHD/SO.

2012 - Bob Kovanen, Cass County Surveyor prepares affidavit and records it as Document Number A000583902 to memorialize previously unrecorded 1927 Certificate of Location.

Information on file in the CCHD/SO and Cass County Recorders Office.

2018 – Patrick Trottier, RLS 41002 finds PK nail and the NE and SE witnesses from 1994. After analysis of record and survey information accepts this monument as the correct perpetuation of the corner and adds additional witness as shown on the face of this drawing.

County Coordinates (Cass County North NAD83/96)

Northing 111439.03

Easting 439057.32