



A000646442

OFFICE OF THE COUNTY RECORDER  
CASS COUNTY, MINNESOTA  
CERTIFIED, FILED, AND/OR  
RECORDED ON

12/6/2018 10:40:50 AM

AS DOC #: A000646442

PAGES: 2

REC FEES: 0.00

KATHRYN M. NORBY  
CASS COUNTY RECORDER

BY SF Dep TX#: 150827

Page 1 of 2 A000646442

Twp 139 Rge 29 Index No. T.0-25.0

### CERTIFICATE OF LOCATION OF GOVERNMENT CORNER

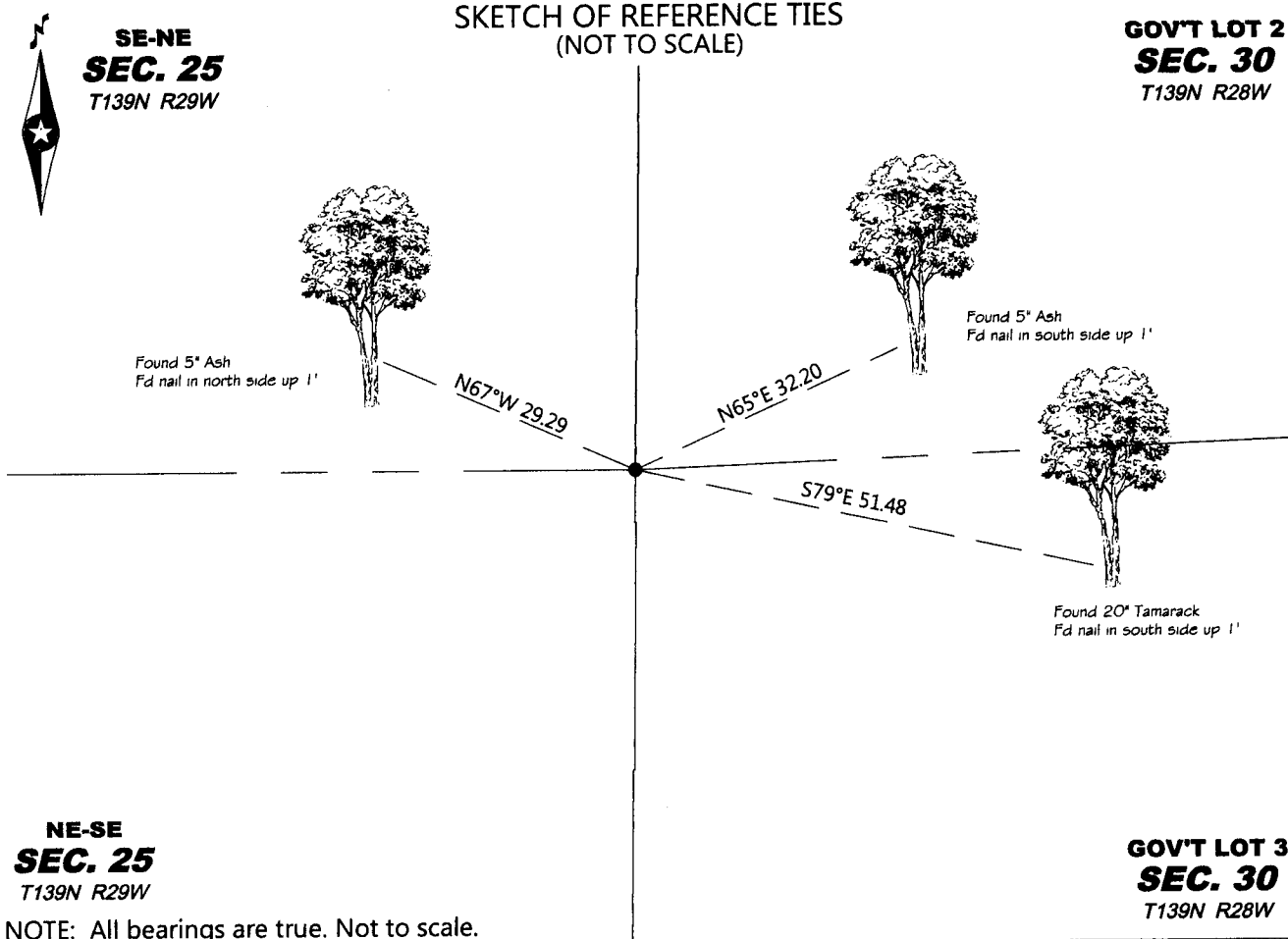
East Quarter Corner of Section 25, Township 139 N., Range 29 W., 5th P.M.  
State of Minnesota, County of Cass

At the corner location shown on the sketch:

On 11-01-2018 found 2" iron pipe in swamp.

left monument as found     lowered monument     removed monument (explain)

On \_\_\_\_\_ placed \_\_\_\_\_



Statement of evidence relative to this corner location is on the back of this page.

I hereby certify that this survey, plan, or report was prepared by me or under my direct supervision and that I am a duly Licensed land Surveyor under the laws of the State of Minnesota. I further certify that this united States public land survey monument record is correct and complete to the best of my knowledge and belief.

Dennis J. Warner  
Dennis J. Warner, Land Surveyor  
Date 12-5-2018 MN License No. 42656



Index No. T.O-25.0

STATEMENT OF EVIDENCE

East Quarter Corner, Section 25, Township 139 North, Range 29 West of the 5th Principal Meridian.

April 1863. Johnson & Thorton, General Land Office (GLO), Deputy Surveyor's, in running the Range line between Ranges 28 and 29 West. Set a post for corner from which:

Tamarack	12"	S70°E	15 links (9.90')
Tamarack	12"	N59°W	27 links (17.82')

Records on file with the Secretary of State, St. Paul, Minnesota and copies are on file with the Cass County Highway Department/Surveyor's Office (CCHD/SO).

August 1918. B.F. Clark, LS 231, Cass County Deputy Surveyor, Survey Record 434, Book C, pg 298, on file in the CCHD/SO, notes

"Set  $\frac{1}{4}$  S. a Jack Pine post 3 ft long and 4 in wide. This gives each  $\frac{1}{4}$  S. 1322  $\frac{1}{2}$  ft."

July 1919. B.F. Clark, LS 231, Cass County Deputy Surveyor, Survey Record 434, Book C, pg 315, on file in the CCHD/SO, notes "set  $\frac{1}{4}$  S. bet. Sec. 30-25, on Range, iron pipe 4 ft long 2 in diam. Stamp the same  $\frac{1}{4}$  S. for Sec. 25-30. Come in Alder swamp. No witness trees near."

June 1920. E.B. Horst, LS 376. Cass County Deputy Surveyor, Survey Record 436, Book C, pg 348, and Curo Book pg. 166 on file in the CCHD/SO, notes "5267.3 P.I. on Clack's true line. True  $\frac{1}{4}$  I.M. set South 104.8:"

March 1922. B.F. Clark, LS 231, CCHD/SO, County Resurvey, on file in the Cass County Recorder's Office (CCRO), recorded as document no. 69800, indicates iron monument.

June 2009. Paul Herkenhoff, RLS 45875, unsigned survey in CCHD/SO shows and found iron pipe in place.

October 2009. B. Hippen, technician, CCHD/SO, found a 2" outside diameter iron pipe stamped  $\frac{1}{4}$  S on west side, up 1.6 feet, in a small grove of large Aspen trees in a small swamp and witnesses as follows:

Ash	5"	N67°W	29.25'
Ash	5"	N65°E	32.20'
Tamarack	20"	S60°E	84.09'

November 1, 2018. A survey crew from Northern Engineering and Consulting Inc. (NECI) visited the corner and found a 2" iron pipe in a swamp up about 1.5'. Also recovered were the three 2009 witnesses.

The coordinates for the recovered monument are:

N 108426.319

E 484333.065

(Cass County North Zone Coordinates)