



A000645406

OFFICE OF THE COUNTY RECORDER
CASS COUNTY, MINNESOTA
CERTIFIED, FILED, AND/OR
RECORDED ON

10/25/2018 10:38:56 AM

AS DOC #: A000645406

PAGES: 2

REC FEES: 0.00

KATHRYN M. NORBY
CASS COUNTY RECORDER

BY SF _____ Dep TX#: 149987

Twp 144 Rge 31 Index No. X.0-05.0

CERTIFICATE OF LOCATION OF GOVERNMENT CORNER

East Quarter corner of Section 31, Township 144 N., Range 31 W., 5th P.M.

State of Minnesota, County of Cass

At the corner location shown on the sketch:

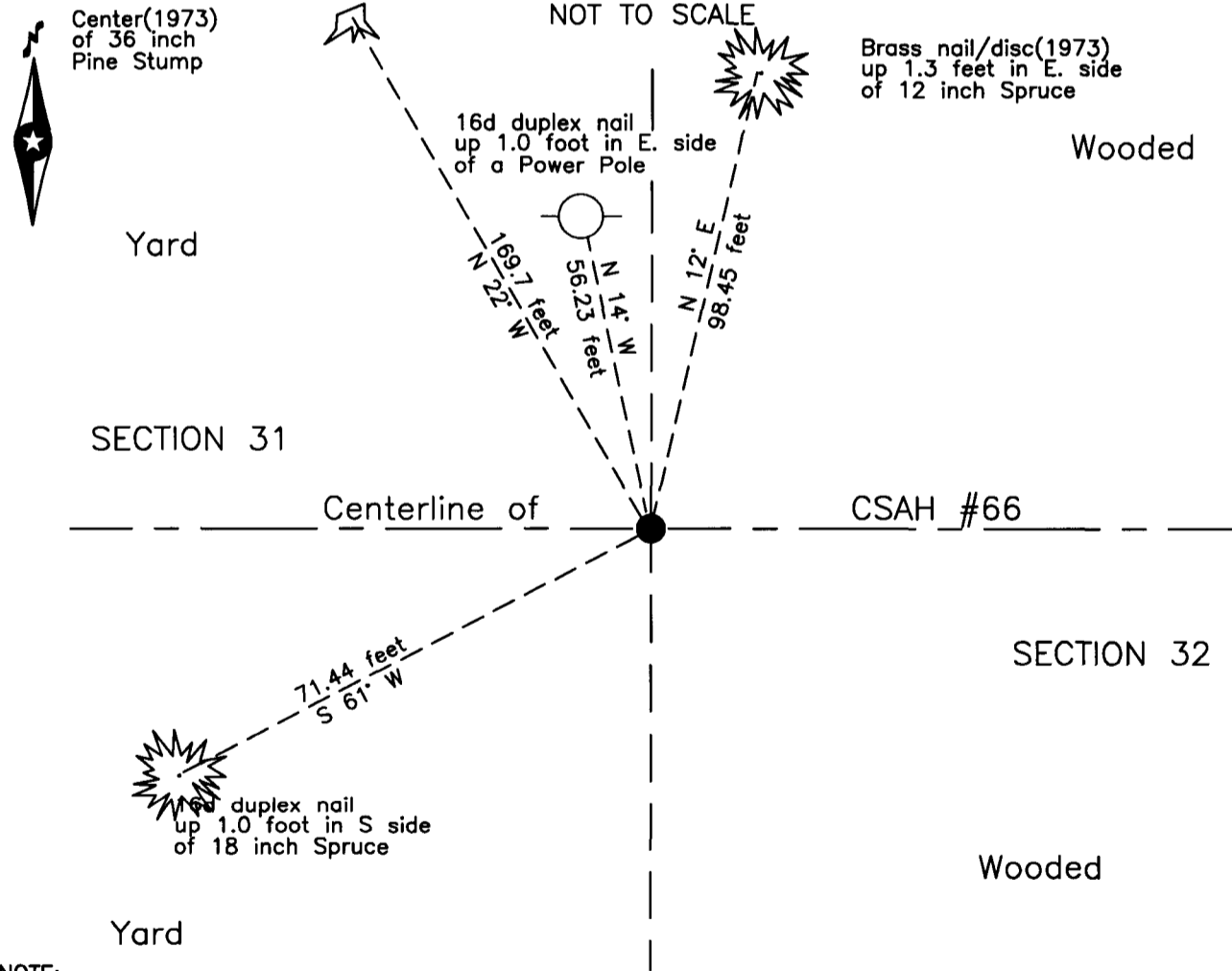
On 24 May 2018 found a 2.25 inch outside diameter iron pipe with plumber cap,
flush, on centerline CSAH #66.

left monument as found lowered monument removed monument (explain)

On 26 Sept 2018 placed the recovered 2.25 inch outside diameter iron pipe with
plumber cap, down 0.05 foot, on new centerline CSAH #66.

SKETCH OF REFERENCE TIES

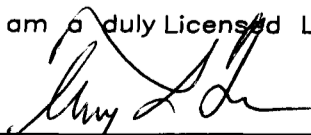
NOT TO SCALE



NOTE:
All bearings are true

Statement of evidence relative to this corner location is on the back of this page.

I hereby certify that this survey, plan or report was prepared by me or under my direct supervision and that I am a duly Licensed Land Surveyor under the laws of the State of Minnesota.


Terry L. Freeman, Cass County Surveyor
Date 10/24/18 MN License No. 21367

Statement of Evidence**East Quarter corner of Section 31, Township 144 North, Range 31 West, 5th Principal Meridian.**

- Aug 1875 B.C. Baldwin, General Land Office (GLO) Deputy Surveyor, in the notes of the subdivision of Township 144 North, Range 31 West, set a post for the original corner and referenced it as follows:
 4" Aspen N 55° W 3 links (1.98 feet) 4" Aspen S 62° E 10 links (6.6 feet)
- Feb 1905 J.W. Curo, LS 1428, Cass County Surveyor, Wilkinson County Road, Road Calendar Book A, page 58 and Road Calendar Book B, page 37, indicates the road runs west and east from the subject corner.
 The above records are on file with the Minnesota Historical Society in St. Paul, Minnesota, copies are filed with the Cass County Highway Department, Surveyor's Office (CCHD/SO).
- Feb. 1905 J.W. Curo, LS 1428, Cass County Surveyor, Survey Record #471, Book C, page 487 and Curo Book 87, page 15, on file in the CCHD/SO, states "found this stake and old B.T.'s from which he set a 4"x4" tam. post and marked new bearings as follows":
 7" Tamarack S 39° E 64.75 feet 6" W. Pine N 56°45' E 57.50 feet
- Jan 1915 N.D. Gorman, Deputy County Surveyor, Survey Record #471, Book C, page 487 and Curo Book 87, pages 14, 15, 44 and 45, states at 2640 "The true ¼ Cor. sets North 8.40 ft. and East 10.15 ft." lists GLO witnesses and states "The post is gone but we find both new B.T.s still standing which check out perfectly with a stone which was buried in place of the stake".
- Nov. 1915 F.N. Molyneux, Assistant Engineer, Survey Record #471, Book C, page 492 and Curo Book 87, page 64, on file in the CCHD/SO, set iron monuments at subdivision corners of Sec. 32 as surveyed by Curo and Gorman last January.
- Dec. 1915 J.W. Curo, LS 1428, Cass County Surveyor, Survey of Section 32, Curo's Contract No. 3, on file in the Cass County Recorders Office, indicates 2 ¼"x 4' I.M., Known corner set from old bearing trees.
- May 1931 Hal D. Craig, U.S. Surveyor, Dependent Resurvey of a Portion of Township 144 North, Range 31 West, on file with the Minnesota Historical Society in St. Paul, Minnesota, copies are filed with the CCHD/SO, found a Cass County galvanized iron pipe, 2.5 inches diameter with iron cap, 6 inches below road surface, at intersection of graded roads to east, west and south and referenced as follows:
 14" W. Pine N 30 1/4° E 142 links (93.72 feet) NE Cor House S 55 1/2° W 250 links (165.00 feet)
 14" W. Pine N 47° W 237 links (156.42 feet)
- Oct. 1973 J.R. Worcester, Engineer CCHD, Road Plan S.A.P. 11-666-01, on file in the CCHD, found 2 inch iron pipe in place at station 53+21.8 and established three new ties as follows:
 30" W. Pine NW 155.7 feet 30" W. Pine NNW 169.7 feet
 8" Spruce NNE 98.5 feet
- July 1978 CCHD, S.A.P. 11-666-01 notes, on file in the CCHD, reset spike at this corner and lists new and established witnesses as follows:
 40" W. Pine NW 141.9 feet 30" W. Pine NNW 169.7 feet
 8" Spruce NNE 98.5 feet
- May 2018 B. Hippen, technician, records of the CCHD/SO, prior to reconstruction of CSAH #66, found a 2.25 inch outside diameter iron pipe with plumber cap, flush, on centerline of CSAH #66 witnessed as follows and then removed the monument.
 36" Pine stp(1973) N 22° W 169.7 feet 12" Spruce(1973) N 12° E 98.45 feet
 18" Spruce S 61° W 71.44 feet Power Pole N 14° W 56.23 feet
- Sept. 2018 B. Hippen, technician, records of the CCHD/SO, reset the found 2.25 inch outside diameter iron pipe with plumber cap, down 0.05 foot, on the new centerline of CSAH #66.

The monument, recovered and established references for the position are shown on the face of this document.

Analysis of the recovered record data, field evidence and survey measurements, indicates that the monument recovered by the CCHD/SO in 2018 is the correct perpetuation of this corner.

County Coordinates (Cass County North)

Northing 260775.57

Easting 394299.30