



A000643880

OFFICE OF THE COUNTY RECORDER
CASS COUNTY, MINNESOTA
CERTIFIED, FILED, AND/OR
RECORDED ON

9/6/2018 10:49:22 AM

AS DOC #: A000643880

PAGES: 2

REC FEES: 0.00

KATHRYN M. NORBY
CASS COUNTY RECORDER

BY NG Dep TX#: 148823

Page 1 of 2 A000643880

CERTIFICATE OF LOCATION OF GOVERNMENT CORNER

I hereby certify that this survey, plan, or report was prepared by me or under my direct supervision and that I am a duly Licensed Land Surveyor under the laws of the State of Minnesota.

Patrick A. Trottier

PATRICK A. TROTTIER

Date: 8-30-2018 License No: 41002

OFFICE OF THE COUNTY RECORDER
County of CASS

I hereby certify that this document was filed in the Office of the County Recorder at _____ o'clock _____ .M. on the _____ day of _____, 20____ A.D.

County Recorder _____

By: _____, Deputy

DOCUMENT NO.

NORTH QUARTER Corner of Section 22, Township 139, Range 26, 5th P.M.

On 5/3/2018 found a 3/4" IRON PIPE WITH PLASTIC CAP RLS #21367

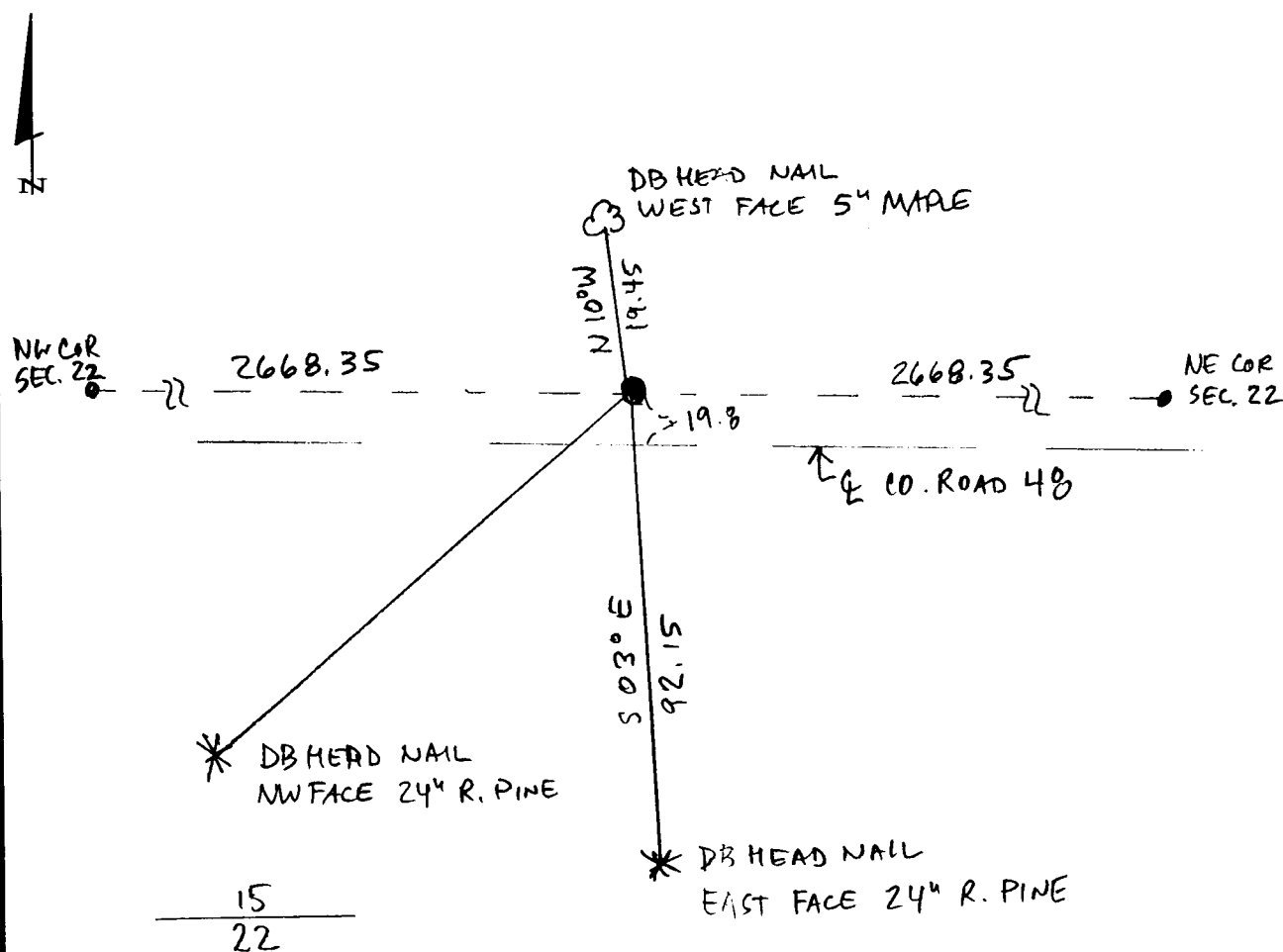
left monument as found, lowered monument, removed monument (explain)

On _____ placed a _____

SKETCH OF REFERENCE TIES

Corner Index: N.0-15.0

Not to Scale



Statement of evidence for this corner position is on the back of this page



N.0-15.0

Statement of Evidence

North Quarter corner, Section 22, Township 139 North, Range 26 West, 5th Principal Meridian, Cass County, Minnesota

1863 – Johnson and Thornton, US Deputy Surveyors originally established this corner position while surveying the interior subdivision lines of Township 139 North, Range 26 West. A wood post was set to mark the corner position with the following witnesses:

24” W. Pine North 38 links
21” W. Pine S 41° W 29 links

Information on file in the MN Historical Society, St. Paul, MN. Copies on file in the Cass County Highway Department/Surveyors Office (CCHD/SO).

2006 – September 27th, a Landecker and Associates, Inc. survey crew searched for the corner; and found nothing, set a ¾ inch iron pipe at the proportionate distance between the Northwest and Northeast corners of Section 22. The following accessories were established:

16” Aspen S 27° E 103.30 feet
24” R. Pine S 3° E 92.15 feet
26” R. Pine S 62° W 130.68 feet

Information on file in the (CCHD/SO). COLOGC Doc# A000522181 and A000525259.

2018 – A Stonemark survey crew found a ¾ inch iron pipe “RLS 21367” flush with the ground, a 24” R. Pine, S 3° E, 92.15’, a 26” R. Pine, S 62° W, 130.68 feet, and is witnessed with the two found ties and an additional tie shown on the front of this certificate. Patrick Trotter PLS #41002, after analysis of record and survey information accepts this monument as the correct perpetuation of the corner.

County Coordinates (Cass County North NAD83/96)

Northing 115903.147
Easting 565621.733