

Page 1 of 2 A000643878

# CERTIFICATE OF LOCATION OF GOVERNMENT CORNER

I hereby certify that this survey, plan, or report was prepared by me or under my direct supervision and that I am a duly Licensed Land Surveyor under the laws of the State of Minnesota.

*Patrick A. Trottier*  
PATRICK A TROTTIER

Date: 9-05-18 License No: 41002  
RLS 41002

OFFICE OF THE COUNTY RECORDER  
County of CASS

I hereby certify that this document was filed in the Office of the County Recorder at \_\_\_\_\_ o'clock \_\_\_\_\_ .M. on the \_\_\_\_\_ day of \_\_\_\_\_, 20\_\_\_\_ A.D.

County Recorder \_\_\_\_\_

By: \_\_\_\_\_, Deputy  
DOCUMENT NO.

NORTHEAST Corner of Section 9, Township 136, Range 32, 5TH P.M.

On 5/3/18 found a BENT 2" IRON PIPE DOWN 0.3', AT INTERSECTION OF 83RD AVE AND 52ND ST SW

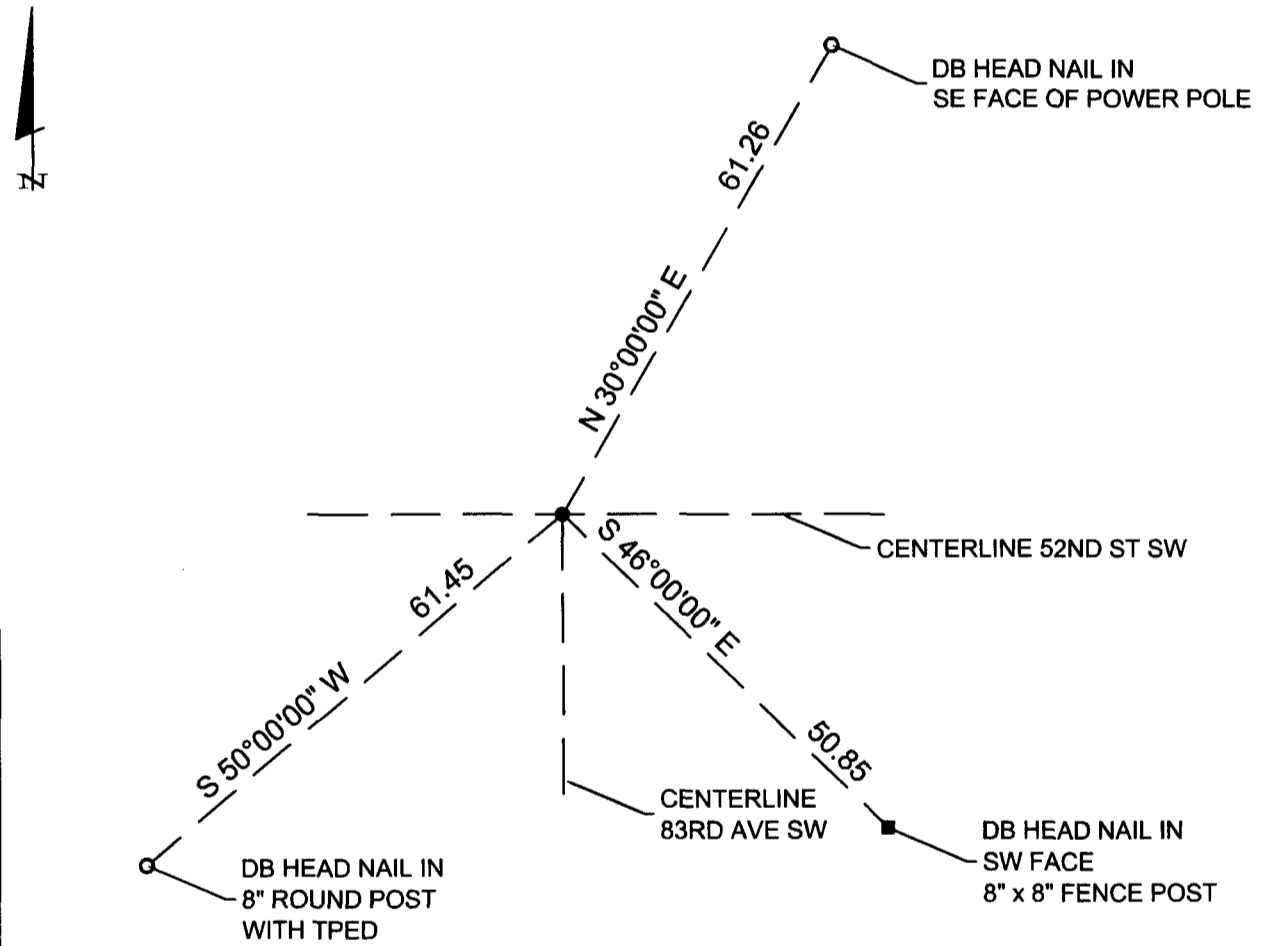
left monument as found,  lowered monument,  removed monument (explain)

On \_\_\_\_\_ placed a \_\_\_\_\_

## SKETCH OF REFERENCE TIES

Corner Index: **E.0-13.0**

Not to Scale



Statement of evidence for this corner position is on the back of this page



**A000643878**

OFFICE OF THE COUNTY RECORDER  
CASS COUNTY, MINNESOTA  
CERTIFIED, FILED, AND/OR  
RECORDED ON

9/6/2018 10:44:50 AM

AS DOC #: A000643878

PAGES: 2

REC FEES: 0.00

KATHRYN M. NORBY  
CASS COUNTY RECORDER

BY SF Dep TX#: 148821

**E.0-13.0**

**Statement of Evidence**

**Northeast corner, Section 9, Township 136 North, Range 32  
West, 5<sup>th</sup> Principal Meridian, Cass County, Minnesota**

1866 – Oscar Garrison, US Deputy Surveyor originally established this corner position while surveying the interior subdivision lines of Township 136 North, Range 32 West. A wood post was set to mark the corner position with the following witnesses:

22" Y. Pine	N 58° E	23 links
8" Y. Pine	S 27°30' W	20 links
6" Y. Pine	N 41° W	140 links
10" Bl. Pine	S 35° E	24 links

Information on file in the MN Historical Society, St. Paul, MN. Copies on file in the Cass County Highway Department/Surveyors Office (CCHD/SO).

1910 – Harry Todd, County Surveyors Record Book A pages 586-587, found wood post. Information on file in the (CCHD/SO).

1916 – E.B. Horst, County Surveyors Record Book B pages 542-544 and Curo Book 65 pages 16-60, found stump of old U.S bearing trees 22" Y. Pine, N 58° E, 23 links, set a 2"x48" iron monument with the following witnesses:

12" Y. Pine	N 17° W	137 feet
8" J. Pine	N 43° E	60 feet
4" J. Pine	S 41° W	61.2 feet

Information on file in the Cass County Highway Department/Surveyors Office (CCHD/SO).

2018 – A Stonemark survey crew found a bent 2" iron pipe at intersection of 52<sup>nd</sup> St SW and 83<sup>rd</sup> Ave SW, and is witnessed with the ties shown on the front of this certificate. Patrick Trottier PLS #41002, after analysis of record and survey information accepts this monument as the correct perpetuation of the corner.

**County Coordinates (Cass County North)**

Northing	267593.0421
Easting	436838.6108