



A000643875

OFFICE OF THE COUNTY RECORDER
 CASS COUNTY, MINNESOTA
 CERTIFIED, FILED, AND/OR
 RECORDED ON

9/6/2018 10:44:47 AM

AS DOC #: A000643875

PAGES: 2

REC FEES: 0.00

KATHRYN M. NORBY
 CASS COUNTY RECORDER

BY SF _____ Dep TX#: 148821

CERTIFICATE OF LOCATION OF GOVERNMENT CORNER

I hereby certify that this survey, plan, or report was prepared by me or under my direct supervision and that I am a duly Licensed Land Surveyor under the laws of the State of Minnesota.

Patrick A. Trottier

PATRICK A TROTTIER

Date: 8-30-2018 License No: 41002
 RLS 41002

OFFICE OF THE COUNTY RECORDER
 County of CASS

I hereby certify that this document was filed in the Office of the County Recorder at _____ o'clock _____ .M. on the _____ day of _____, 20____ A.D.

County Recorder _____

By: _____, Deputy
 DOCUMENT NO. _____

EAST QUARTER Corner of Section 4, Township 136, Range 32, 5TH P.M.

On 5/3/18 found a 2" IRON PIPE UP 1.5'

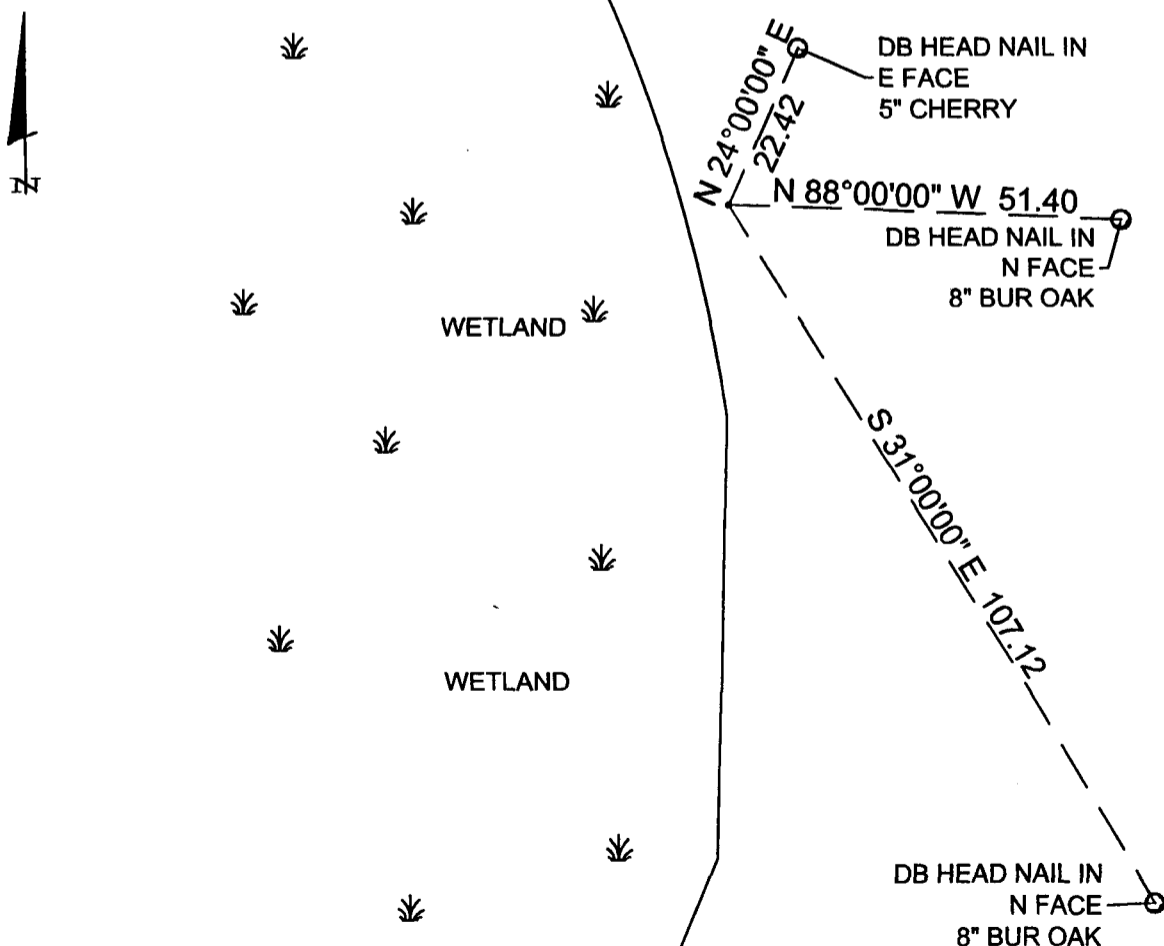
left monument as found, lowered monument, removed monument (explain)

On _____ placed a _____

SKETCH OF REFERENCE TIES

Corner Index: C.0-13.0

Not to Scale



Statement of evidence for this corner position is on the back of this page



C.0-13.0

Statement of Evidence

**East Quarter corner, Section 4, Township 136 North, Range 32
West, 5th Principal Meridian, Cass County, Minnesota**

1866 – Oscar Garrison, US Deputy Surveyor originally established this corner position while surveying the interior subdivision lines of Township 136 North, Range 32 West. A wood post was set to mark the corner position with the following witnesses:

12” Y. Pine N 5° E 115 links
14” Y. Pine N 2° W 387 links

Information on file in the MN Historical Society, St. Paul, MN. Copies on file in the Cass County Highway Department/Surveyors Office (CCHD/SO).

1916 – E.B. Horst, County Surveyors Record Book B pages 542-544 and Curo Book 65 pages 16 and 60, found old U.S bearing trees, 12” Y. Pine ,N 5° E, 115 links and 14” Y. Pine, N 2° W, 387 links, set an iron monument and additional following witnesses:

5” J. Pine N 62° E 32.4 feet
6” J. Pine S 49° E 142.0 feet

Information on file in the (CCHD/SO).

2018 –A Stonemark survey crew found a 2 inch iron monument up 1.5 feet, and is witnessed with the ties shown on the front of this certificate. Patrick Trottier PLS #41002, after analysis of record and survey information accepts this monument as the correct perpetuation of the corner.

County Coordinates (Cass County North)

Northing 270249.3719
Easting 436817.8237