

Page 1 of 2 A000640757



A000640757

OFFICE OF THE COUNTY RECORDER
CASS COUNTY, MINNESOTA
CERTIFIED, FILED, AND/OR
RECORDED ON

5/24/2018 10:11:22 AM

AS DOC #: A000640757

PAGES: 2

REC FEES: 0.00

KATHRYN M. NORBY
CASS COUNTY RECORDER

BY SF Dep TX#: 146334

Twp 140 Rge 31 Index No. P.0-09.0

CERTIFICATE OF LOCATION OF GOVERNMENT CORNER

East Quarter corner of Section 20, Township 140 N., Range 31 W., 5th P.M.
State of Minnesota, County of Cass

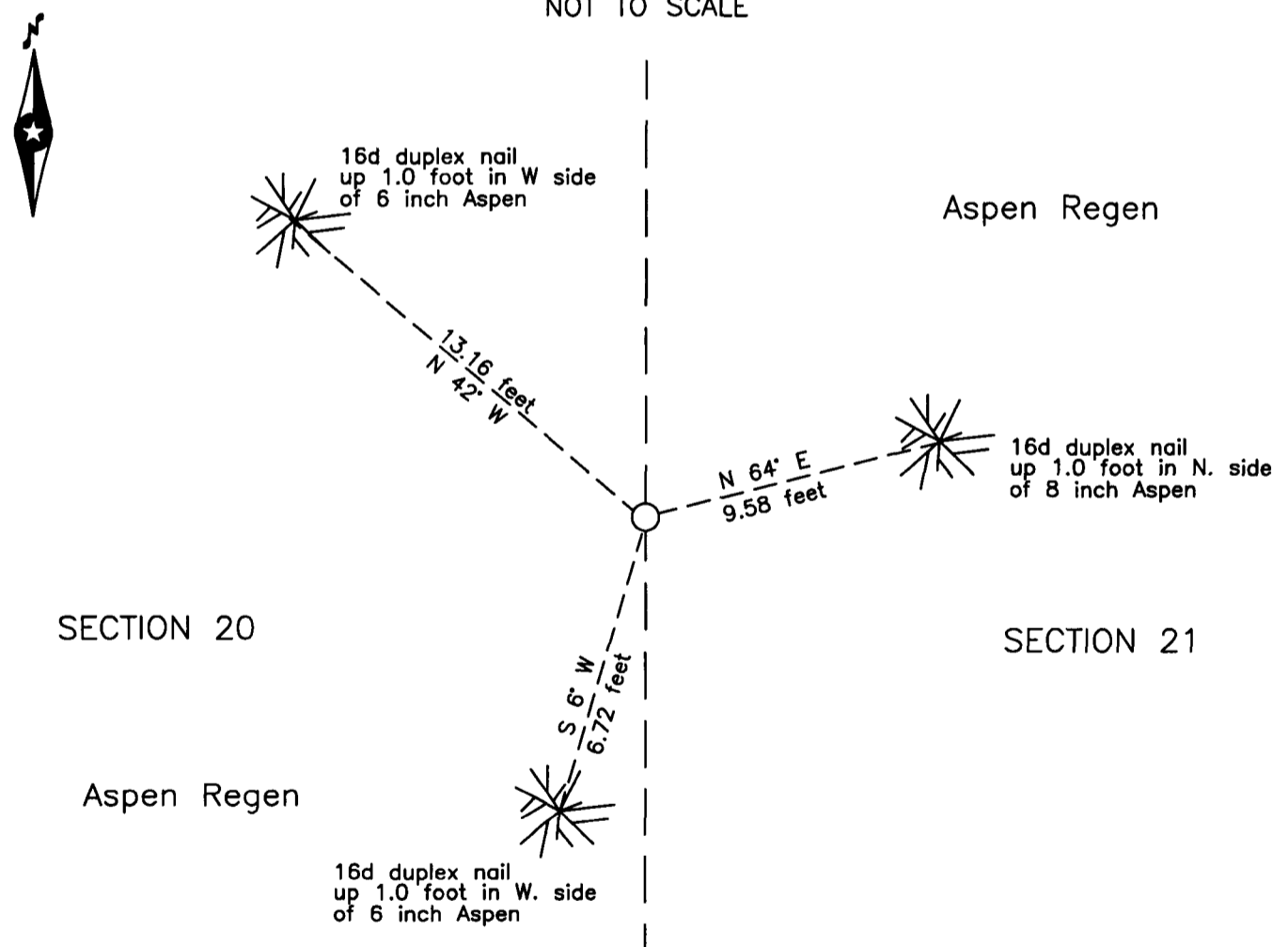
At the corner location shown on the sketch:

On _____ found _____

left monument as found lowered monument removed monument (explain)

On 3 May 2018 placed a 7/8 inch outside diameter iron pipe, capped RLS 21367,
up 0.5 foot at the lost position.

SKETCH OF REFERENCE TIES NOT TO SCALE



NOTE:
All bearings are true

Statement of evidence relative to this corner location is on the back of this page.

I hereby certify that this survey, plan or report was prepared by me or under my direct supervision and that I am a duly Licensed Land Surveyor under the laws of the State of Minnesota.

Terry L. Freeman, Cass County Surveyor
Date 5/23/18 MN License No. 21367

Statement of Evidence

East Quarter corner Section 20, Township 140 North, Range 31 West, 5th Principal Meridian.

Nov. 1870 T.B. Walker, General Land Office (GLO) Deputy Surveyor, in the notes of the subdivision of Township 140 North, Range 31 West, set a post for the original corner and referenced it as follows:
20" W. Pine East 40 links (26.40 feet) 4" W. Oak S 41° W 19 links (12.54 feet)
The above record is on file with the Minnesota Historical Society in St. Paul, Minnesota, copies are filed with the Cass County Highway Department, Surveyor's Office (CCHD/SO).

Feb. 1915 N.D. Gorman, Engineer, Survey Record No. 329, Book B, pages 466 and Curo Book 88, page 14 and 20, on file in the CCHD/SO, lists the GLO witnesses and states "We find an old oak stump torn loose from its roots and lying on the ground which appears to have been blazed but all evidence of the pine tree is gone." He later drove 80d spike in ground at the proportionate position and witnessed as follows:
12" N. Pine N 3°42' W 54.80 feet 6" J. Pine S 22°3' W 29.40 feet

May 2018 B. Hippen, technician, records of the CCHD/SO, set a 7/8 inch outside diameter iron pipe, up 0.5 foot, at the lost position, midway and on line between the northeast and southeast corners of section 20 and witnessed as follows:
6" Aspen N 42° W 13.16 feet 8" Aspen N 64° E 9.58 feet
6" Aspen S 6° W 6.72 feet

The recovered and established witnesses for this corner position are shown on the face of this document.

Analysis of the recovered record data, field evidence and survey measurements, indicates that the monument set by the CCHD/SO in 2018 is the accepted location of this corner.

County Coordinates (Cass County North)

Northing 145586.94

Easting 399952.55